

GSTIN No.: 06AAPW8746Q1Z6,
PAN No.: AAVPW8746Q
TIN No.: 06821328889,
TAN no.: RTKKO3359G
IEC: 0509006116

M: 00 91 9810 291 381, 8800 544 881

Email: info@krmloto.com, info@krmcorporation.com, krmloto@gmail.com

Regd. Office: 1H/31-A, N.I.T, Faridabad-121001 (Haryana) Postal Office: 615, Sector-15-A, Faridabad-121007-Haryana-NCR-INDIA

www.krmcorporation.com | www.lockouttagouts.com | www.krmloto.com | www.locktagindia.com | www.lotoappliances.com



Lock Tag!!

to meet
OSHA'S Lockout Tagout Standard
29 CFR, 1910.147 & 1910.269



www.lotoappliances.com

safe loto

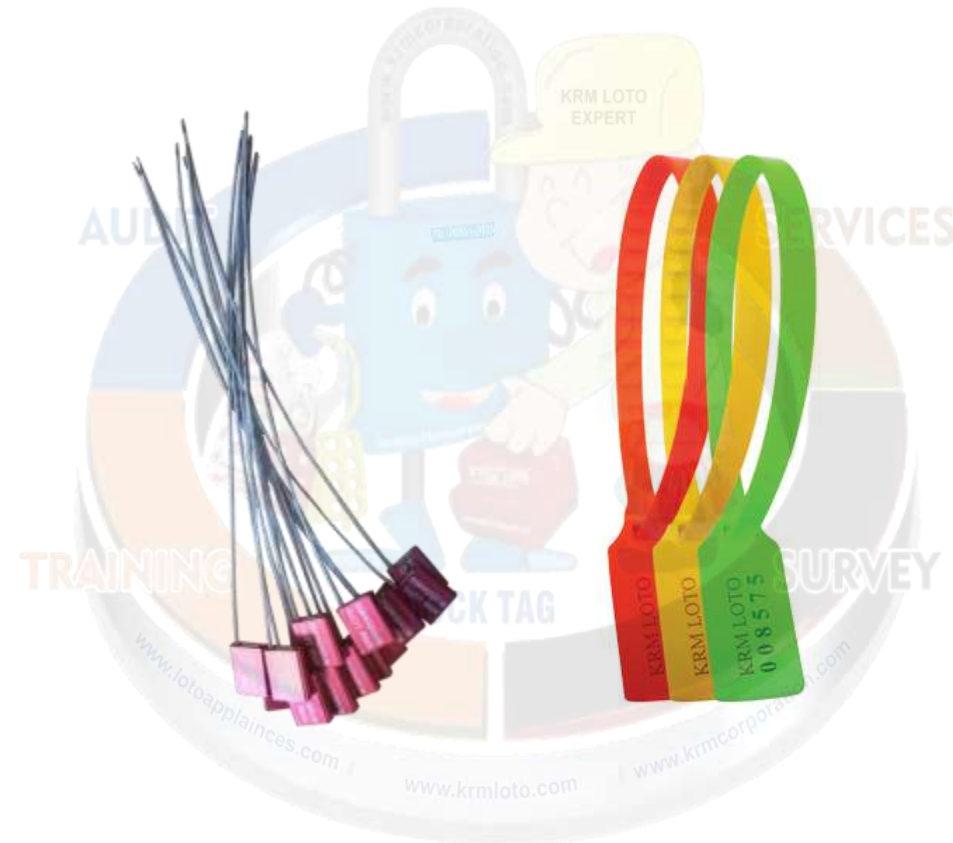


KRM Safetech Private Limited
QUALITY MANAGEMENT SYSTEM ISO 9001:2015

GSTIN No.: 06AAECK2831L1Z1
PAN No.: AAECK2831L
TIN No.: 06824000112
CIN No.: U31903HR2011PTC042508
IEC: AAECK2831L

Telefax: 00 91 129 4021 381, 413 1381 (D)

KRM LOTO - CAR LOCK SEAL / TAG / SAFETY SEAL / SECURITY SEAL





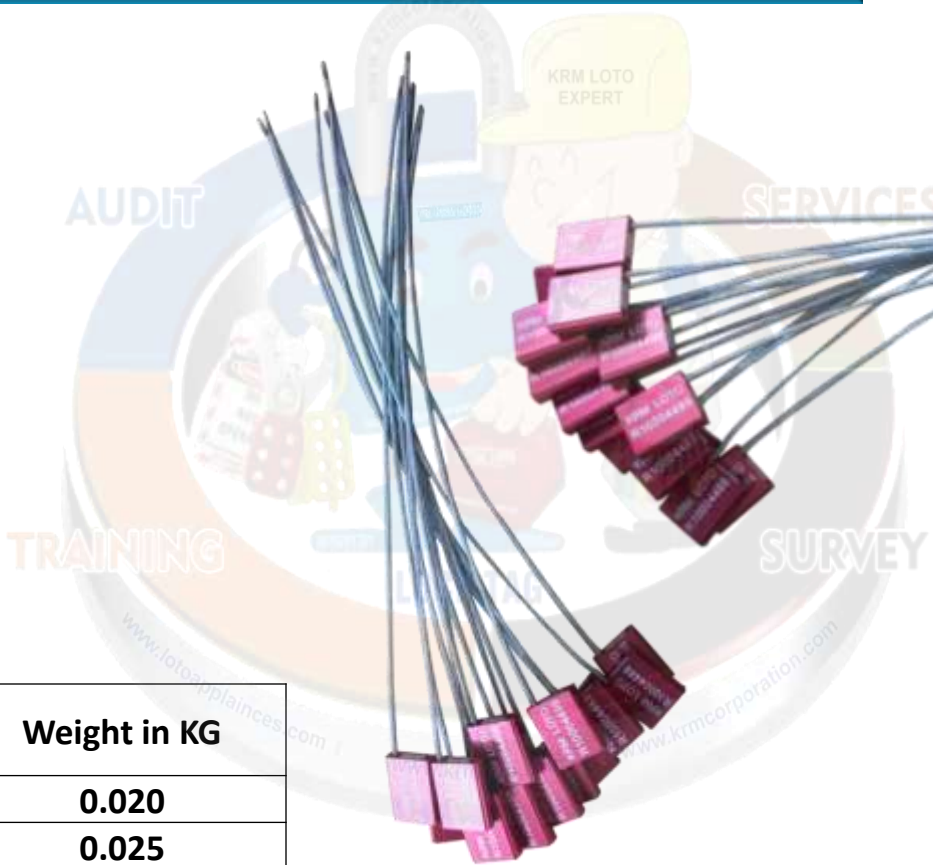
KRM LOTO - CAR LOCK SEAL SELF LOCKING (Cable Thickness Size – 1.5mm)

Specifications:

- Body : Metal/Aluminum
- Size : 25mm x 22.40 mm app.
- Cable : Galvanized steel , 1.5 mm dia.
- Length : 300 mm
- Marking : individual number on each piece
- Color Anodized : red, yellow, black , blue , green, aluminium on volume basis
- **Customization Colors:** can make on huge volume

NOTE - IMAGES FOR REFERENCE ONLY.

Mode No	Cable Length (mm)	Cable Thickness Size (mm)	Weight in KG
KRM-K-CLSSL-315	300	1.5	0.020
KRM-K-CLSSL-615	600	1.5	0.025
KRM-K-CLSSL-915	900	1.5	0.030





Lock Tag!!

to meet
OSHA'S Lockout Tagout Standard
29 CFR, 1910.147&1910.269



www.lotoappliances.com

safe loto

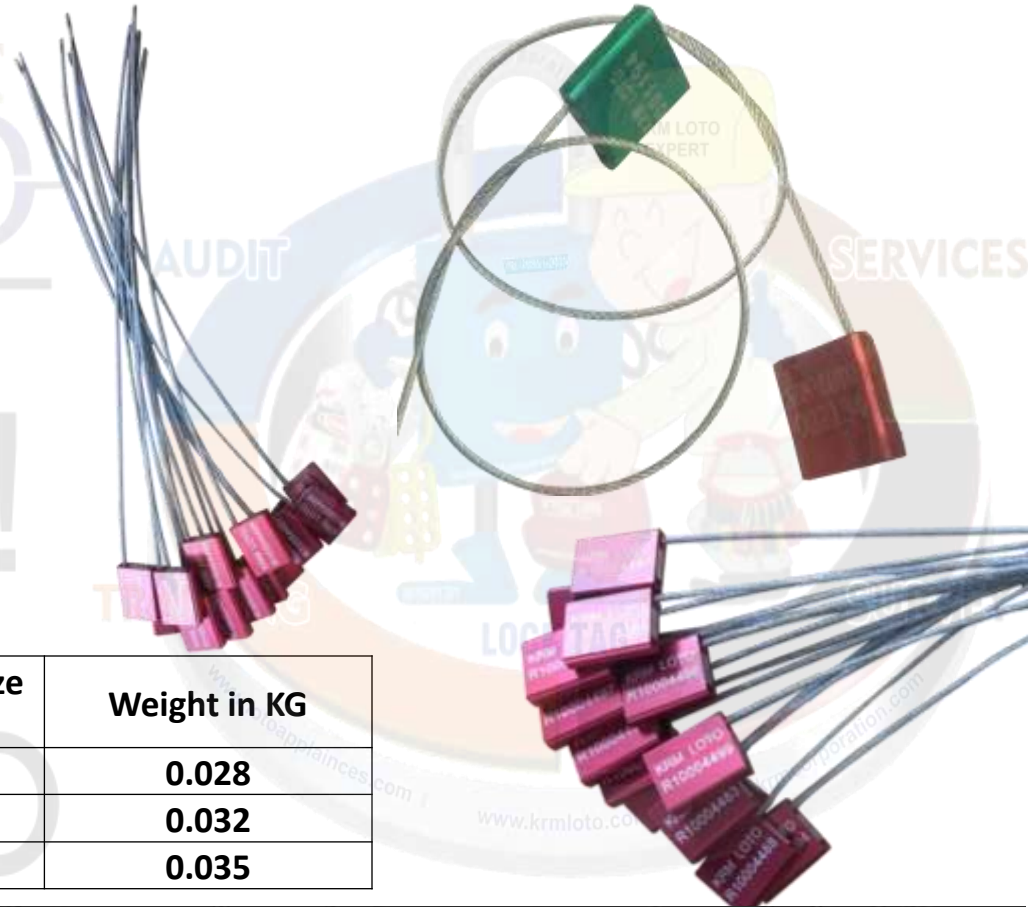


KRM LOTO - CAR LOCK SEAL SELF LOCKING (Cable Thickness Size – 2 mm)

Specifications:

- Body : Metal/Aluminum
- Size : 26.20mm x 22.30 mm app.
- Cable : Galvanized steel , 2 mm dia.
- Length : 300 mm
- Marking : individual number on each piece
- Color Anodized : red, yellow, black , blue , green, aluminium on volume basis.
- **Customization Colors:** can make on huge volume

NOTE - IMAGES FOR REFERENCE ONLY.



Mode No	Cable Length (mm)	Cable Thickness Size (mm)	Weight in KG
KRM-K-CLSSL-32	300	2	0.028
KRM-K-CLSSL-62	600	2	0.032
KRM-K-CLSSL-92	900	2	0.035

GSTIN No.: 06AAVPW8746Q1Z6,
PAN No.: AAVPW8746Q
TIN No.: 06821328889,
TAN no.: RTKKO3359G
IEC: 0509006116

M: 00 91 9810 291 381, 8800 544 881

Regd. Office:1H/31-A, N.I.T, Faridabad-121001 (Haryana) Postal Office:615, Sector-15-A, Faridabad-121007-Haryana-NCR-INDIA

www.krmcorporation.com | www.lockouttagouts.com | www.krmloto.com | www.locktagindia.com | www.lotoappliances.com



Lock Tag!!

to meet
OSHA'S Lockout Tagout Standard
29 CFR, 1910.147&1910.269



www.lotoappliances.com

safe loto



KRM Safetech Private Limited
QUALITY MANAGEMENT SYSTEM ISO 9001:2015

GSTIN No.: 06AAECK2831L1Z1
PAN No.: AAECK2831L
TIN No.: 06824000112
CIN No.: U31903HR2011PTC042508
IEC: AAECK2831L

Telefax: 00 91 129 4021 381, 413 1381 (D)

KRM LOTO - CAR LOCK SEAL SELF LOCKING (Cable Thickness Size – 2.5mm)

Specifications:

- Body : Metal/Aluminum
- Size : 26.50mm x 25.50 mm app.
- Cable : Galvanized steel , 2.5 mm dia.
- Length : 300 mm
- Marking : individual number on each piece
- Color Anodized : red, yellow, black , blue , green, aluminium on volume basis.
- **Customization Colors:** can make on huge volume

NOTE - IMAGES FOR REFERENCE ONLY.



Model No	Cable Length (mm)	Cable Thickness Size (mm)	Weight in kg
KRM-K-CLSSL-325	300	2.5	0.040
KRM-K-CLSSL-625	600	2.5	0.050
KRM-K-CLSSL-925	900	2.5	0.060

GSTIN No.: 06AAVPW8746Q1Z6,
PAN No.: AAVPW8746Q
TIN No.: 06821328889,
TAN no.: RTKKO3359G
IEC: 0509006116

M: 00 91 9810 291 381, 8800 544 881

Email: info@krmloto.com, info@krmcorporation.com, krmloto@gmail.com

Regd. Office:1H/31-A, N.I.T, Faridabad-121001 (Haryana) Postal Office:615, Sector-15-A, Faridabad-121007-Haryana-NCR-INDIA

www.krmcorporation.com | www.lockouttagouts.com | www.krmloto.com | www.locktagindia.com | www.lotoappliances.com



Lock Tag!!

to meet
OSHA'S Lockout Tagout Standard
29 CFR, 1910.147&1910.269



www.lotoappliances.com

safe loto



KM Safetech Private Limited
QUALITY MANAGEMENT SYSTEM ISO 9001:2015

GSTIN No.: 06AAECK2831L1Z1
PAN No.: AAECK2831L
TIN No.: 06824000112
CIN No.: U31903HR2011PTC042508
IEC: AAECK2831L

Telefax: 00 91 129 4021 381, 413 1381 (D)

KRM LOTO - CAR LOCK SEAL SELF LOCKING (Cable Thickness Sizes - 3.5mm)

Specifications:

- Body : Metal/Aluminum
- Size : 35mm x 28mm x app.
- Cable : Galvanized steel , 3.5 mm dia.
- Length : 300 mm
- Marking : individual number on each piece
- Color Anodized : red, yellow, black , blue , green, aluminum on volume basis.
- **Customization Colors:** can make on huge volume .

NOTE - IMAGES FOR REFERENCE ONLY.



Model No	Cable Length (mm)	Cable Thickness Size (mm)	Weight in kg
KRM-K-CLSSL-335	300	3.5	0.070
KRM-K-CLSSL-635	600	3.5	0.080
KRM-K-CLSSL-935	900	3.5	0.090

KRM CORPORATION

ISO 9001:2015, ISO 14001:2015, ISO 45001:2018
to meet OSHA's Lockout Tagout Standard 29 CFR, 1910.147&1910.269

GSTIN No.: 06AAVPW8746Q1Z6,
PAN No.: AAVPW8746Q
TIN No.: 06821328889,
TAN no.: RTKKO3359G
IEC: 0509006116

M: 00 91 9810 291 381, 8800 544 881

Email: info@krmloto.com, info@krmcorporation.com, krmloto@gmail.com

Regd. Office:1H/31-A, N.I.T, Faridabad-121001 (Haryana) Postal Office:615, Sector-15-A, Faridabad-121007-Haryana-NCR-INDIA

www.krmloto.com | www.lockouttagouts.com | www.krmloto.com | www.locktagindia.com | www.lotoappliances.com



Lock Tag!!

to meet
OSHA'S Lockout Tagout Standard
29 CFR, 1910.147&1910.269



www.lotoappliances.com

safe loto



KM Safetech Private Limited
QUALITY MANAGEMENT SYSTEM ISO 9001:2015

GSTIN No.: 06AAECK2831L1Z1
PAN No.: AAECK2831L
TIN No.: 06824000112
CIN No.: U31903HR2011PTC042508
IEC: AAECK2831L

Telefax: 00 91 129 4021 381, 413 1381 (D)



Comments: _____

Date: _____

Signed: _____

KRMLOTO #10089 G

SIZE-60X80MM

KRM-K-LT#10089-G



Comments: _____

Date: _____

Signed: _____

KRMLOTO #10089 R

SIZE-60X80MM

KRM-K-LT#10089-R



KRM LOTO – PLASTIC SECURITY SEAL

SPECIFICATIONS:

- Material : PP (Polypropylene) Plastic,
- Tightening Type Locking Structure
- Printing Area – 33/20 Mm
- Flat Area – 40 Mm
- Total Seal Length -350 Mm
- Color : Red, yellow, green,
- Standard packing : 100pcs/bag 2500pcs/ctn.
- Weight of 100 pcs – 700 grams
- Weight of 2500 pcs – 18 Kg.
- NOTE : Volumetric weight for 2500 pc =21kg
 (Cartoon size - 48 x 48 x 46 cm)



KRM-K-PSS





KRM LOTO - KEYLESS PADLOCK SEAL

DESCRIPTION:

- Keyless Lock Seals are ideal seals for application on Containers, Wagons, Boxes, Cubicles, Panel Doors etc.

Material:

- **Body** : ABS
- **Shackle** : Steel

PRINTING:

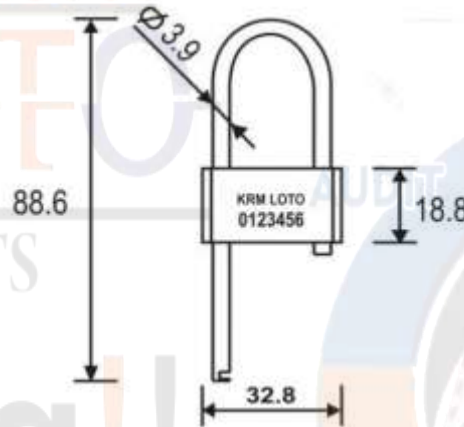
- **Logo** : Laser Marked
- **Serial Nos.** : Laser marked on Body and S

PACKAGING:

- 100 Locks in a Polybag

USE:

- Pass shackle through object closure and pressing open end of shackle inside hole on body of Keyless Lock seals attains complete Locking. Cut using Heavy Duty Cutter to open.
- **Color** : Red, yellow, green, Blue



KRM-K-KPS