

KRM CORPORATION

OSHAS 18001-2007 & BS EN ISO 9001 : 2008 CERTIFIED COMPANY
to meet OSHA'S Lockout Tagout Standard 29 CFR, 1910.147&1910.269

GSTIN No.: 06AAVPW8746Q1Z6,
PAN No.: AAVPW8746Q
TIN No.: 06821328889,
TAN no.: RTKKO3359G

M: 00 91 9810 291 381, 8800 544 881

Regd. Office:1H/31-A, N.I.T, Faridabad-121001 (Haryana) Postal Office:615, Sector-15-A, Faridabad-121007-Haryana-NCR-INDIA

www.krmcorporation.com | www.lockouttagouts.com | www.safetyloto.com | www.lockoutmaster.com | www.lotoappliances.com



to compliance
OSHA'S Lockout Tagout Standard
29 CFR, 1910.147&1910.269



www.lotoappliances.com



KRM Safetech Private Limited

GSTIN No.: 06AAECK2831L1ZI
PAN No.: AAECK2831L
TIN No.: 06824000112
CIN No.: u31903HR2011PTC042508

Telefax: 00 91 129 4021 381, 413 1381 (D)

LOCKOUT - TAGOUT FOR SAFETY

LOCKOUT TAGOUT PRODUCTS INCREASE EFFICIENCY AND SAFETY LEVELS ARE USED IN CREATING A SAFER WORKER ENVIRONMENT

1. Identify

the types of energy sources used, potential hazards, and all control devices.



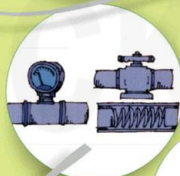
2. Notify

all affected employees.



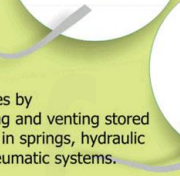
3. Turn off

all operating controls.



4. Locate

all energy sources.



5. Isolate

all energy sources by blocking, bleeding and venting stored energy as found in springs, hydraulic systems and pneumatic systems.



6. Lock-out

all switches and energy controls in the 'off' or 'safe' position.



7. Test

the operating controls . Put all controls in the 'on' position. Be sure nobody can get hurt before testing.



8. Return

all operating controls to the 'off' position.



9. Perform

required task.



10. Remove

lock-out devices only after the equipment is fully assembled and all affected employees have been notified. Each lock-out device must be removed by the person who put it on .



M: 00 91 9810291381

www.krmcorporation.com

KRM-K-LTHIA-AS#143

KNOW HOW TO LOCK OUT ACCIDENTS!

Make sure that you are trained to De-energize and Lockout the machine. Never give your lock and key to anyone. Always treat equipment as live. Never tamper or remove other lock. Remember, that Lockout must be done on all energy types.



Identify the Equipment to be locked out.

Notify the Area Supervisor or Affected employees.

Notify the Control Room.



Shut down the equipment by using its operating controls.

Take care that you don't endanger anyone during shutdown.

Check that equipment has come to a standstill.



Switch off all electrical sources.

Be sure to isolate all energy sources- secondary as well as the main one.

Secure against movement.



Only Authorized personnel should apply proper Lockout Device and tag.

All team members must affix individual padlocks for personal safety.



Record Reasons of Lockout.

Record Date, Time and Name of the Person Performing Lockout job.

Record the Details of Lockout Devices.



Attempt to Start the equipment by all possible means.

Verify that the Equipment is secured against any Movement.



Use Proper Notices and Signboard to mark Lockout Zone.

Use Other Safety Measures as per the job requirement.



Perform the job/ Repairing Maintenance etc.

Keep Locked out Until the Task is Complete.

Remove Lockouts Safely after the completion of job.

Check and Re-energize the machinery.

M: 00 91 9810291381

www.krmcorporation.com

KRM-K-LTHIA-AS#144



to compliance
 OSHA'S Lockout Tagout Standard
 29 CFR, 1910.147&1910.269



www.lotoappliances.com



KRM LOTO - LOCKOUT TAGOUT POSTER

- Made of multimedia pre adhesive vinyl
- With transparent UV lamination
- Made of thick 3 mm thick ACP sheet.
- Eco friendly.
- Size - 6"x 4" FEET
- Indoor and Outdoor application.
- If required can make holes on the corner of the sheet to hang it.
- Customization can be done for size and matter on the quantity ordered.
- Weight – 5.5 kg.
- NOTE:- Volumetric Weight will be charged for this piece.
- Prices available are for a single piece.

आईसोलेशन एवं लॉकआउट

क्या करना चाहिए	क्या नहीं करना चाहिए
<p>सभी परिवर्तित के लिए आईसोलेशन मीटरिंग का प्रयोग करें।</p>	<p>आईसोलेशन मीटरिंग की आपस पर आईसोलेशन एवं लॉकआउट नहीं होने का कार्य प्रारंभ न करें।</p>
<p>प्रशिक्षित तथा अधिकृत आईसोलेशन अधिकार एवं परमिट होकर ही सभी कार्य प्रारंभ करें।</p>	<p>दूरदर्शी कंट्रोल एवं इंटरलॉक को आईसोलेशन एवं लॉकआउट मीटरिंग के रूप में उपयोग न करें।</p>
<p>आईसोलेशन अधिकार प्राप्त उर्जा की स्थिति सुनिश्चित करें।</p>	<p>परमिट (लॉक) को आईसोलेशन मीटरिंग / लॉक लॉकआउट वोल्टेज में लगी कर कार्य करना न छोड़ें।</p>
<p>कार्य प्रारंभ करने से पहले अपना परमिट लॉक का उपयोग करें।</p>	<p>परमिट लॉक की चाबी किसी अन्य व्यक्ति को न दें।</p>
<p>आईसोलेशन एवं लॉकआउट मीटरिंग / उपकरणों पर यदि कोई अनधिकृत विचार/काम है तो तुरंत उनको सुनिश्चित करें।</p>	<p>परमिट लॉक का उपयोग आईसोलेशन के अलावा किसी अन्य काम के लिए न करें।</p>
<p>यदि VCB नहीं है तो विद्युत आईसोलेशन को स्थान पर स्थानिक आईसोलेशन जानूँ।</p>	<p>सुरक्षादाता(एड): परमिट लॉक का उपयोग किसी किसी भी उपकरण में प्रवेश न करें चाबी का इस्तेमाल के लिए ही नहीं न करें।</p>

ध्यान दें- आईसोलेशन एवं लॉकआउट के लिए उचित परिस्थिति का कार्यालय अधिकृत और एक ही कार्य अधिकृत संयुक्त प्रयोग करना (FPE) आवश्यक है।
 का स्थान नहीं ले सकते। इन दिशानिर्देश का उपयोग एक अधिकृत स्थान के रूप में किया जा सकता है।
www.krmcorporation.com

KRM-K-LTHIA-AS#145

GSTIN No.: 06AAVPW8746Q1Z6,
PAN No.: AAVPW8746Q
TIN No.: 06821328889,
TAN no.: RTKKO3359G

M: 00 91 9810 291 381, 8800 544 881

Regd. Office: 1H/31-A, N.I.T, Faridabad-121001 (Haryana) Postal Office: 615, Sector-15-A, Faridabad-121007-Haryana-NCR-INDIA

www.krmcorporation.com | www.lockouttagouts.com | www.safetyloto.com | www.lockoutmaster.com | www.lotoappliances.com



to compliance
OSHA'S Lockout Tagout Standard
29 CFR, 1910.147&1910.269



www.lotoappliances.com



GSTIN No.: 06AAECK2831L1Z1
PAN No.: AAECK2831L
TIN No.: 06824000112
CIN No.: u31903HR2011PTC042508

Telefax: 00 91 129 4021 381, 413 1381 (D)

PROCEDURE for LOCKOUT TAGOUT SYSTEM

to meet OSHA LOCKOUT/TAGOUT STANDARD, 29CFR & 1910.269

- ❖ Manager responsible for the repair / maintenance shall ensure that only trained & authorized employee's carry out KRM LOTO
- ❖ Ensure a valid work permit is obtained prior to start of work (where applicable).
- ❖ Identify all energy isolation points such as power supply, compressed air supply, fuel supply, gas supply etc., for that equipment / machine before locking out.
- ❖ Physically locate and turn the respective switches, valves etc., to "OFF" / "Neutral" position and provide necessary KRM LOTO devices in such a way that they cannot be bypassed.
- ❖ Prior to starting work on machines or equipment that have been locked and after ensuring that no personnel are exposed, the authorized person shall operate the push button or normal operating controls to verify that the appropriate equipment or machine has been de-energized & make certain it will not operate.
- ❖ If more than one person are required to work on the equipment under isolation, each person shall put a separate lock on all isolating devices.
- ❖ A Tag consisting of following information shall be fixed to each lock. (P) see sample tag
 - i. Name & department of the Person carrying out repair / maintenance work.
 - ii. Caution note written as "DANGER- LOCKED OUT"
- ❖ After the servicing and / or maintenance is completed, authorized person shall inspect the equipment / machine thoroughly to ensure all non-essential items, tools / tackles etc. are removed.
- ❖ Supervisor after ensuring that the work is complete, allows the authorized person to remove lockout devices & energizes the machine.



www.krmcorporation.com | Email: lockout@krmcorporation.com | M: +91-9810291381, +91-8800544881 | L: +91-129-4021381, +91-129-4131381

KRM-K-LTHIA-AS#146

GUIDELINES for LOCKOUT TAGOUT SYSTEM

- ❖ All drives (Motors) shall be provided with separate local lockable isolators to ensure safety of personnel required to work on these drives during preventive or breakdown maintenance.
- ❖ Lockout & tag out procedure shall be established and implemented during inspection, cleaning, repair or maintenance of any plant, machinery or equipment, so that if inadvertently activated or energized, will not cause any bodily injury to any person.
- ❖ Every person carrying out the work shall be fully instructed / trained on the lock out procedure, applicable lock devices, etc., before commencing the work.
- ❖ Unit shall identify all energy sources & their isolation points, and each point shall be given and identification number and a list of isolation points shall be maintained. Typical Energy Sources where isolation is required are:
 - i. Mechanical Energy Sources: Pumps, Pulley, Gear & pinion, flywheel, prime movers, hoists, forklifts/stackers etc.
 - ii. Electrical Energy Sources: Switchgears such as ACB, SFU's, MCB's, MCCB's etc., Motors, Generators, switches etc.
 - iii. Water: Gate valves, Pumps etc.
 - iv. Acids/ ENA/ Blend lines: Control Valves, Pumps etc.
 - v. Compressed air: Valves, receiver tanks etc.
 - vi. Steam : Control valves, isolation valves etc.
 - vii. Gas : Control / isolation valves etc.
- ❖ Unit must ensure that all electrical isolators in the panels are provided with locking facilities. Where the isolator does not have built-in locking facility, external locking facility should be provided.
- ❖ The requirement of KRM LOTO devices (Type as well as Nos.) shall be assessed and adequate nos. of necessary devices shall be made available in the unit at all times. Refer section 4.0 for guidance on selection of KRM LOTO devices. All KRM LOTO devices shall be kept at easily accessible place & in custody of a responsible person.



www.krmcorporation.com | Email: lockout@krmcorporation.com | M: +91-9810291381, +91-8800544881 | L: +91-129-4021381, +91-129-4131381

KRM-K-LTHIA-AS#147



to compliance
OSHA'S Lockout Tagout Standard
29 CFR, 1910.147&1910.269



www.lotoappliances.com



Isolation & Lockout

Do's	Don'ts
Refer activity base energy isolation matrix for isolation	Don't start work without isolation and lock out as per isolation matrix
Isolate and lock all relevant energy sources by trained and authorized isolation officer and permit holder	Don't use emergency controls, interlocks as isolation and lockout points
Isolation officer(s): Ensure Zero state of energy Permit Holder: Test try out phase	Don't leave plant with your personal lock at the isolation point/group lock outbox.
Always apply personal lock before starting the work	Never handover the personal lock key to other person
Always report deficiency, if any observed in isolation & lock out point/devises	Don't use your personal lock for any other purpose than isolation
If VCS is not available, follow multiple isolation in place of single Isolation	Supervisor(s): don't enter the equipment even for inspection without applying the Personal lock

Disclaimer : These covers only most common critical points, please use PPE guidelines for extensive guidelines

www.krmcorporation.com



KRM-K-LTHIA-AS#148

कन्वेयर सुरक्षा

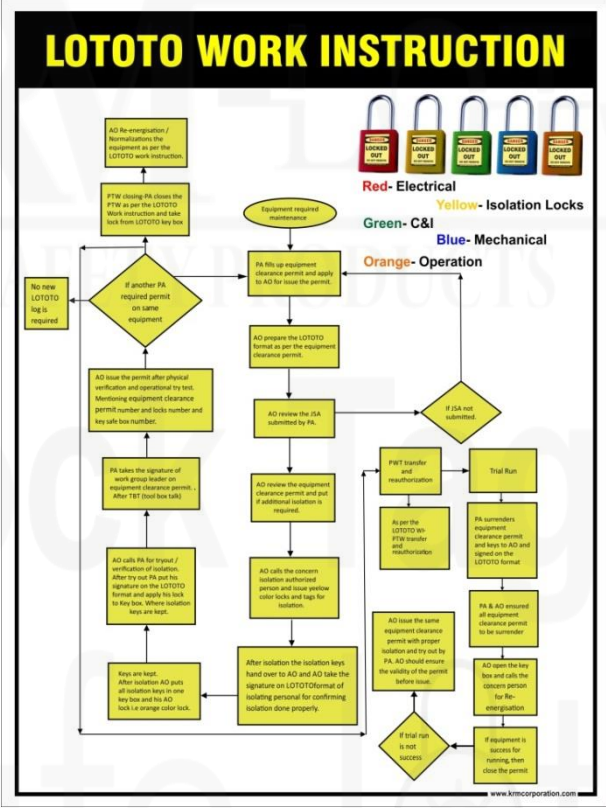
कन्वेयर पर बैठना, कब्जा, सकेते लेना सखत मना है।	कन्वेयर पर किसी तरह का रख रखाव करने से पहले सुनिश्चित कर ले कि विजली न्यूमेटिक, हाइड्रोलिक ऐंड ब्रेकट एजजी के सभी खोत बंद है।	कन्वेयर बन्दो से पहले सुनिश्चित कर ले कि असुरत कवर व सुरक्षा इक्वज अजी जगह है।
केवल अधिकृत व प्रशिक्षित व्यक्ति ही कन्वेयर को चलाए ऐंव रख रखाव करे।	कन्वेयर से अपने कपडे शरीर के अंग तथा बालो को दूर रखे।	कन्वेयर के बंदित भाग की सफाई करने से पहले सुनिश्चित कर ले कि विजली के सभी खोत बंद है ऐंव सुरक्षा इक्वज अजी जगह पर है।
कन्वेयर के संचालन संभ में किसी भी प्रकार का परिवर्तन ऐंव दुरुयोग न करे।	सभी प्रकार के संचालन संभ दिखाई दे ऐंव पदच योग्य हो।	सभी असुरक्षित कार्यप्रणालियों परिस्थितियों की सुचना दे।

www.krmcorporation.com

KRM-K-LTHIA-AS#149



www.lotoappliances.com



KRM-K-LTHIA-AS#150

DANGER LOCKOUT SAFETY DANGER

ENERGY CAN BE DANGEROUS AND CAN BE PRESENT IN DIFFERENT FORMS:

- ELECTRICITY
- MECHANICAL PRESSURE
- HYDRAULIC PRESSURE
- STEAM
- COMPRESSED AIR

WATCH OUT FOR STORED ENERGY. SOME MACHINES STORE ENERGY IN RAISED LOADS, COILED SPRINGS, CHARGED CAPACITORS AFTER ENERGY SOURCES HAVE BEEN TURNED OFF.

WHAT IS A TAGOUT?
 A Lockout tag Shows Who Locked Out The Mechanism, The Time, Date, And Department. Other Information Such As Phone Or Radio Page Number Can Also Be Shown. Tags Should Be Durable And Securely Fastened To The Lockout Mechanism So They Don't Accidentally Fall Off. Tags Should Be Legible In All Weather Conditions And Should Only Be Applied And Removed By The Same Authorized Individual. Lockout Tags Warn Of Danger. Do Not Tamper With The Switches Or Mechanisms Which They Are Attached To.

WHAT IS ENERGY LOCKOUT?
 A Lockout is a Device Which Provides a Positive Means For Restoring A Safety device is a device that can be used to lockout round valve handles of a Switch, Valve, Raised Load, Coiled Spring Or Any Energy Source Requiring Lockout is a Necessary Step For Ensuring Worker Safety Prior To Performing Maintenance Or Service. The Lockout Device May Be A Padlock, Blocking Device, Resistor Bar, Chain And Padlock Or Any Device Which Prevents A Machine From Being Energized Or Releasing Stored Energy. In the above example a padlock (1) is used to lockout the electrical box and a blocking bar (2) is used to prevent the press weights from dropping (see diagram) preventing access and turning on, depending on the type some valve handles can be locked out with a chain and padlock.

BASIC ELEMENTS OF A LOCKOUT SAFETY PROGRAM

- DETERMINE WHAT ENERGY SOURCES WILL BE LOCKED OUT**
- BE SURE ALL STORED ENERGY IS SAFELY RELEASED OR BLOCKED**
- ONLY PERSON WHO APPLIED LOCKTAG REMOVES IT!**
- CAN LOCKS BE APPLIED?**
- DETERMINE SEQUENCE TO FOLLOW.**
- DETERMINE WHO WILL APPLY LCKS/TAGS BEFORE REMOVING LOCKS/TAGS AND RETURNING MACHINERY TO OPERATION.**
- MULTIPLE MAINTENANCE PERSONNEL**
- FOLLOW COMPANY PROCEDURE FOR PREFORMING MAINTENANCE SERVICE**
- FOLLOW THE PREDETERMINED COMPANY SEQUENCE OF UNLOCKING AND UNTAGGING THE LOCKOUT POINT TO RETURN THE MACHINE TO SERVICE**
- CONTINUED EMPLOYEE TRAINING AND EDUCATION**

M: 00 91 9810 291 381 | www.krmcorporation.com

KRM-K-LTHIA-AS#151

KRM CORPORATION

OHSA 18001-2007 & BS EN ISO 9001 : 2008 CERTIFIED COMPANY
to meet OSHA's Lockout Tagout Standard 29 CFR, 1910.147&1910.269

GSTIN No.: 06AAVPW8746Q1Z6,
PAN No.: AAVPW8746Q
TIN No.: 06821328889,
TAN no.: RTKKO3359G

M: 00 91 9810 291 381, 8800 544 881



LOCKOUT/TAGOUT
KRM-LOTO
SAFETY PRODUCTS

to compliance
OSHA'S Lockout Tagout Standard
29 CFR, 1910.147&1910.269



www.lotoappliances.com



KRM Safetech Private Limited

GSTIN No.: 06AAECK2831L1ZI
PAN No.: AAECK2831L
TIN No.: 06824000112
CIN No.: u31903HR2011PTC042508

Telefax: 00 91 129 4021 381, 413 1381 (D)

Regd. Office: 1H/31-A, N.I.T, Faridabad-121001 (Haryana) Postal Office: 615, Sector-15-A, Faridabad-121007-Haryana-NCR-INDIA

www.krmcorporation.com | www.lockouttagouts.com | www.safetyloto.com | www.lockoutmaster.com | www.lotoappliances.com

KRM LOTO – LOCKOUT TAGOUT SAFETY POSTER

- Made of multimedia pre adhesive vinyl
- With transparent UV lamination
- Made of thick 3mm thick ACP sheet.
- Eco friendly.
- Size - 24" x 48"
- Indoor and Outdoor application.
- If required can make holes on the corner of the sheet to hang it.
- Customization can be done for size and matter on the quantity ordered.
- Weight - 1 kg.
- NOTE:- Volumetric Weight will be charged for this piece.
- Prices available are for a single piece.



KRM-K-LTHIA-AS#152

KRM CORPORATION

QHSAS 18001-2007 & BS EN ISO 9001 : 2008 CERTIFIED COMPANY
to meet OSHA'S Lockout Tagout Standard 29 CFR, 1910.147&1910.269

GSTIN No.: 06AAVPW8746Q1Z6,
PAN No.: AAVPW8746Q
TIN No.: 06821328889,
TAN no.: RTKKO3359G

M: 00 91 9810 291 381, 8800 544 881



LOCKOUT/TAGOUT
KRM-LOTO
SAFETY PRODUCTS

to compliance
OSHA'S Lockout Tagout Standard
29 CFR, 1910.147&1910.269



www.lotoappliances.com

**KRM Safetech Private Limited**

GSTIN No.: 06AAECK2831L1ZI
PAN No.: AAECK2831L
TIN No.: 06824000112
CIN No.: u31903HR2011PTC042508

Telefax: 00 91 129 4021 381, 413 1381 (D)

Regd. Office: 1H/31-A, N.I.T, Faridabad-121001 (Haryana) Postal Office: 615, Sector-15-A, Faridabad-121007-Haryana-NCR-INDIA

www.krmcorporation.com | www.lockouttagouts.com | www.safetyloto.com | www.lockoutmaster.com | www.lotoappliances.com

Notes:

- Lock & Tag should be used with all loto products.
- For group locking on particular energy hasp should be used.
- Group lockout box should be used for group lockout tagout.
- Scissor Cable or Round cable lockout can be used to lock multiple hazardous energies instead putting individual locks & tags.