

GSTIN No.: 06AAMPW8746Q1Z6,
PAN No.: AAMPW8746Q
TIN No.: 06821328889,
TAN no.: RTKKO3359G
IEC: 0509006116

M: 00 91 9810 291 381, 8900 544 881



OEM Manufacturer & Global Supplier of
Lockout Tagout & Safety Products

to meet
OSHA'S Lockout Tagout Standard
29 CFR, 1910.147&1910.269



www.locktagindia.com



GSTIN No.: 06AAECK2831L1Z1
PAN No.: AAECK2831L
TIN No.: 06824000112
CIN No.: U31903HR2011PTC042508
IEC: AAECK2831L

Telefax: 00 91 129 4021 381, 413 1381 (D)

Regd. Office: 1H/31-A, N.I.T, Faridabad-121001 (Haryana) Postal Office: 615, Sector-15-A, Faridabad-121007-Haryana-NCR-INDIA

www.krmcorporation.com

www.lockouttagouts.com

www.krmloto.com

www.locktagindia.com

www.lotoappliances.com

KRM LOTO – OSHA SAFETY LOCK TAG PADLOCK

Index Page No:-2

SR.NO	KRM LOTO PART CODE	PRODUCT NAME	WEIGHT (kg)	TECHNICAL PAGE NO.
1	KRM-K-OSLTP-C-MDK	Osha Safety Lock Tag Padlocks / Locks - With differ key - 38 mm Height - Metal Shackle Thickness 6 mm	0.1	6-7
2	KRM-K-OSLTP-C-MKA	Osha Safety Lock Tag Padlocks / Locks - With Alike key - 38 mm Height - Metal Shackle Thickness 6 mm	0.1	6-7
3	KRM-K-OSLTP-C-MDK+M	Osha Safety Lock Tag Padlocks / Locks - With differ + master key - 38 mm Height - Metal Shackle Thickness 6 mm	0.1	6-7
4	KRM-K-OSLTP-C-NDK	Osha Safety Lock Tag Padlocks / Locks - With differ key - 38 mm Height - Nylon Shackle Thickness 6 mm	0.1	8-9
5	KRM-K-OSLTP-C-NKA	Osha Safety Lock Tag Padlocks / Locks - With Alike key - 38 mm Height - Nylon Shackle Thickness 6 mm	0.1	8-9
6	KRM-K-OSLTP-C-NDK	Osha Safety Lock Tag Padlocks / Locks - With differ + master key - 38 mm Height - Nylon Shackle Thickness 6 mm	0.1	8-9
7	KRM-K-OSLTP-DLC-MDK	Osha Safety Lock Tag Padlocks / Locks - With differ key - 76 mm Height - Metal Shackle Thickness 6 mm	0.125	10-11
8	KRM-K-OSLTP-DLC-MKA	Osha Safety Lock Tag Padlocks / Locks - With Alike key - 76 mm Height - Metal Shackle Thickness 6 mm	0.125	10-11
9	KRM-K-OSLTP-DLC-MDK+M	Osha Safety Lock Tag Padlocks / Locks - With differ + master key - 76 mm Height - Metal Shackle Thickness 6 mm	0.125	10-11
10	KRM-K-OSLTP-DLC-NDK	Osha Safety Lock Tag Padlocks / Locks - With differ key - 76 mm Height - Nylon Shackle Thickness 6 mm	0.105	12-13
11	KRM-K-OSLTP-DLC-NKA	Osha Safety Lock Tag Padlocks / Locks - With Alike key - 76 mm Height - Nylon Shackle Thickness 6 mm	0.105	12-13

**KRM LOTO – OSHA SAFETY LOCK TAG PADLOCK****Index Page No:-3**

SR.NO	KRM LOTO PART CODE	PRODUCT NAME	WEIGHT (kg)	TECHNICAL PAGE NO.
12	KRM-K-OSLTP-DLC-NDK+M	Osha Safety Lock Tag Padlocks / Locks - With differ + master key - 76 mm Height - Nylon Shackle Thickness 6 mm	0.105	12-13
13	KRM-OSSPL-DK	Osha Safety isolation lockout padlock – differ key short metal shackle - 26 mm Shackle Height Metal Shackle Thickness 6 mm	0.80	16-17
14	KRM-OSSPL-DK+M	Osha Safety isolation lockout padlock – differ + master key short metal shackle - 26 mm Shackle Height Metal Shackle Thickness 6 mm	0.80	16-17
15	KRM-K-OSSPL-DE	Osha Safety isolation lockout padlock - differ key short Nylon shackle - 26 mm Shackle Height - Nylon Shackle Thickness 6 mm	0.80	18-19
16	KRM-K-OSSPL-DE+M	Osha Safety isolation lockout padlock - differ + master key short Nylon shackle - 26 mm Shackle Height - Nylon Shackle Thickness 6 mm	0.80	18-19
17	KRM-K-OSLTP-SSDK-47	Osha Safety Lock Tag Padlocks / Locks - With differ key - 38 mm Height - Steel Shackle Thickness 4.7 mm	0.95	20-21
18	KRM-K-OSLTP-SSDK-47-KA	Osha Safety Lock Tag Padlocks / Locks - With Alike key - 38 mm Height - Steel Shackle Thickness 4.7 mm	0.95	20-21
19	KRM-K-OSLTP-SSDK-47-KA+M	Osha Safety Lock Tag Padlocks / Locks - With differ + master key - 38 mm Height - Metal Shackle Thickness 4.7 mm	0.95	20-21
20	KRM-K-OSLTP-SSDK-426	Osha Safety isolation lockout padlock – differ key stainless steel shackle - 26 mm Shackle Height shackle thickness 4 mm		22-23
21	KRM-K-OSLTP-SSDK-426+M	Osha Safety isolation lockout padlock – differ + master key stainless steel shackle - 26 mm Shackle Height shackle thickness 4 mm		22-23
22	KRM-K-OSLTP-SSDK-4	Osha Safety isolation lockout padlock – differ key stainless steel shackle - 38 mm Shackle Height shackle thickness 4 mm	0.95	24-25



OEM Manufacturer & Global Supplier of
 Lockout Tagout & Safety Products

to meet
 OSHA'S Lockout Tagout Standard
 29 CFR, 1910.147&1910.269



www.lockouttagouts.com



KRM LOTO – OSHA SAFETY LOCK TAG PADLOCK

Index Page No:-4

SR.NO	KRM LOTO PART CODE	PRODUCT NAME	WEIGHT (kg)	TECHNICAL PAGE NO.
23	KRM-K-OSLTP-SSDK-4+M	Osha Safety isolation lockout padlock – differ + master key stainless steel shackle - 38 mm Shackle Height shackle thickness 4 mm	0.95	24-25
24	KRM-K-OSLTP-MDK	Osha Safety Lock Tag Padlocks / Locks - With differ key - 38 mm Height - Metal Shackle Thickness 6 mm	0.1	26-27
25	KRM-K-OSLTP-MKA	Osha Safety Lock Tag Padlocks / Locks - With Alike key - 38 mm Height - Metal Shackle Thickness 6 mm	0.1	26-27
26	KRM-K-OSLTP-MDK+M	Osha Safety Lock Tag Padlocks / Locks - With differ + master key - 38 mm Height - Metal Shackle Thickness 6 mm	0.1	26-27
27	KRM-K-OSLTP-NDK	Osha Safety Lock Tag Padlocks / Locks - With differ key - 38 mm Height - Nylon Shackle Thickness 6 mm	0.1	28-29
28	KRM-K-OSLTP-NKA	Osha Safety Lock Tag Padlocks / Locks - With Alike key - 38 mm Height - Metal Shackle Thickness 6 mm	0.1	28-29
29	KRM-K-OSLTP-NDK+M	Osha Safety Lock Tag Padlocks / Locks - With differ + master key - 38 mm Height - Nylon Shackle Thickness 6 mm	0.1	28-29
30	KRM-K-DLSPL	Osha Safety Lock Tag Padlocks / Locks - With differ key - 76 mm Height - Metal Shackle	0.125	30-31
31	KRM-K-DLSPL-DE	Osha Safety Lock Tag Padlocks / Locks - With differ key - 76 mm Height - NYLON Shackle	0.105	32-33



OEM Manufacturer & Global Supplier of
 Lockout Tagout & Safety Products

to meet
 OSHA'S Lockout Tagout Standard
 29 CFR, 1910.147&1910.269

Email: info@krmloto.com, info@krmcorporation.com, krmloto@gmail.com

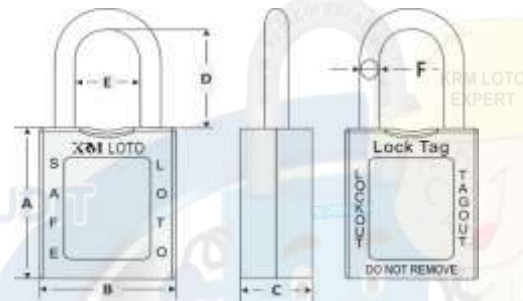
Regd. Office:1H/31-A, N.I.T, Faridabad-121001 (Haryana) Postal Office:615, Sector-15-A, Faridabad-121007-Haryana-NCR-INDIA

www.krmcorporation.com | www.lockouttagouts.com | www.krmloto.com | www.locktagindia.com | www.lotoappliances.com

www.lotoappliances.com

KRM LOTO - OSHA SAFETY LOCK TAG PADLOCK – METAL SHACKLE

- Padlock Is a detachable Lock Passed By An Opening With U-shaped Shackle Used To Protect Against Unauthorized Or Unwanted Stealing. Provided With Latest Locking Mechanism Used To Lock The Different Devices.
- KRM LOTO SAFETY PADLOCK --"seamless" lock structure durability-Key system: DIFFER KEY, ALIKE KEY, MASTER & DIFFER KEY. The new management key technology,- 10 level management
- To meet OSHA standard for The Control of Hazardous Energy (Lockout/Tagout), Title **29 Code of Federal Regulations(CFR) Part 1910.147**
- With a curve at top to hold the lock with better grip
- Key Head in injection mold with same color of the lock.
- Key retaining-ensures that padlock is not left unlocked.
- Configuration key card, easy to know personal ID, indicating the corresponding padlock for easy management.
- Key system: **DIFFER KEY, ALIKE KEY, MASTER & DIFFER KEY.**
- **Body material:** Glass fiber reinforced nylon/(composition of ABS+NYLON)
- **Shackle Material:** Metal Shackle
- **Color:** Red, Yellow, Blue, Green, Orange, White, Brown, Black, Purple
- Work temperature 0o - 250o F (-20o - 120o C)
- Also "**DO NOT REMOVE**", permanently engraved on the lock.
- **Weight – 100gm**



KRM-K-OSLTP-C-MDK



BODY HEIGHT (A)	BODY WIDTH (B)	BODY DEPTH (C)	SHACKLE HEIGHT (D)	SHACKLE WIDTH (E)	SHACKLE THICKNESS (F)
45 mm	40 mm	20 mm	38 mm	20 mm	6 mm



OEM Manufacturer & Global Supplier of
Lockout Tagout & Safety Products

to meet
OSHA'S Lockout Tagout Standard
29 CFR, 1910.147&1910.269



www.lockoutappliances.com



LOCKOUT/TAGOUT

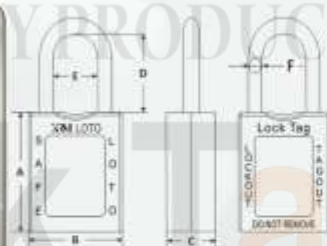


OSHA SAFETY LOCK TAG PADLOCKS-METAL SHACKLE

CE Certified

Padlock is a detachable Lock Passed By An Opening With U-shaped Shackle Used To Protect Against Unauthorized Or Unwanted Stealing. Provided With Latest Locking Mechanism Used To Lock The Different Devices.

- KRM LOTO SAFETY PADLOCK -- "seamless" lock structure durability-Key system: **DIFFER KEY, ALIKE KEY, MASTER & DIFFER KEY.** The new management key technology, - 10 level management
- To meet OSHA standard for The Control of Hazardous Energy (Lockout/Tagout), Title **29 Code of Federal Regulations(CFR) Part 1910.147**
- With a curve at top to hold the lock with better grip
- Key Head in injection mold with same color of the lock.
- Key retaining-ensures that padlock is not left unlocked.
- Configuration key card, easy to know personal ID, indicating the corresponding padlock for easy management.
- Key system: DIFFER KEY, ALIKE KEY, MASTER & DIFFER KEY.
- Body material: Glass fiber reinforced nylon/(composition of ABS+NYLON)
- Shackle Material: Metal Shackle
- Color: Red, Yellow, Blue, Green, Orange, White, Brown, Black, Purple
- Work temperature 0° - 250° F (-20° - 120° C)
- Also "DO NOT REMOVE", permanently engraved on the lock.
- Weight - 100gm



KRM-K-OSLTP-C-MDK
(Metal Shackle)

Color swatches: white, yellow, red, black, blue, orange, purple, green. **KRM-K-OSLTP-C-MDK**

BODY HEIGHT (A)	BODY WIDTH (B)	BODY DEPTH (C)	SHACKLE HEIGHT (D)	SHACKLE WIDTH (E)	SHACKLE THICKNESS (F)
45mm	40mm	20mm	38mm	20mm	6mm



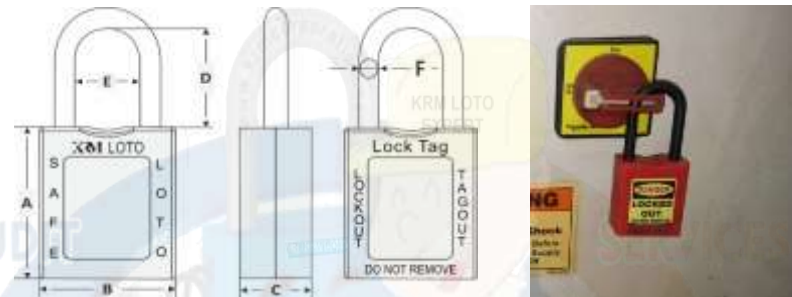
OEM Manufacturer & Global Supplier of
 Lockout Tagout & Safety Products

to meet
 OSHA'S Lockout Tagout Standard
 29 CFR, 1910.147&1910.269

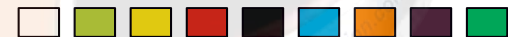


KRM LOTO - OSHA SAFETY LOCK TAG PADLOCK – NYLON SHACKLE

- Padlock Is a detachable Lock Passed By An Opening With U-shaped Shackle Used To Protect Against Unauthorized Or Unwanted Stealing. Provided With Latest Locking Mechanism Used To Lock The Different Devices.
- KRM LOTO SAFETY PADLOCK ----"seamless" lock structure durability-Key system: DIFFER KEY, ALIKE KEY, MASTER & DIFFER KEY. The new management key technology,- 10 level management.
- To meet OSHA standard for The Control of Hazardous Energy (Lockout/Tagout), Title 29 Code of Federal Regulations(CFR)Part 1910.147
- With a curve at top to hold the lock with better grip
- Key Head in injection mold with same color of the lock.
- Key retaining-ensures that padlock is not left unlocked.
- Configuration key card, easy to know personal ID, indicating the corresponding padlock for easy management.
- Key system: **DIFFER KEY, ALIKE KEY, MASTER & DIFFER KEY.**
- **Body material:** Glass fiber reinforced nylon/(composition of ABS+NYLON)
- **Shackle Material:** Nylon Shackle
- **Color:** Red, Yellow, Blue, Green, Orange, White, Brown, Black, Purple
- Work temperature 0o - 250o F (-20o - 120o C)
- Also "DO NOT REMOVE", permanently engraved on the lock.
- **Weight** – 80gm



KRM-K-OSLTP-C-NDK



BODY HEIGHT (A)	BODY WIDTH (B)	BODY DEPTH (C)	SHACKLE HEIGHT (D)	SHACKLE WIDTH (E)	SHACKLE THICKNESS (F)
45 mm	40 mm	20 mm	38 mm	20 mm	6 mm



OEM Manufacturer & Global Supplier of
Lockout Tagout & Safety Products

to meet
OSHA'S Lockout Tagout Standard
29 CFR, 1910.147&1910.269



www.lockoutappliances.com



LOCKOUT/TAGOUT

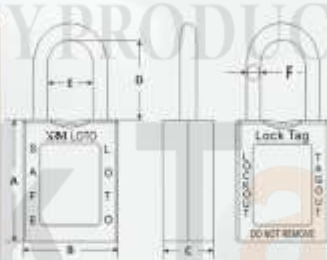


OSHA SAFETY LOCK TAG PADLOCKS-NYLON SHACKLE

CE Certified

Padlock is a detachable Lock Passed By An Opening With U-shaped Shackle Used To Protect Against Unauthorized Or Unwanted Stealing. Provided With Latest Locking Mechanism Used To Lock The Different Devices.

- KRM LOTO SAFETY PADLOCK --- "seamless" lock structure durability-Key system: **DIFFER KEY, ALIKE KEY, MASTER & DIFFER KEY.** The new management key technology,- 10 level management.
- To meet OSHA standard for The Control of Hazardous Energy (Lockout/Tagout), Title **29 Code of Federal Regulations(CFR) Part 1910.147**
- With a curve at top to hold the lock with better grip
- Key Head in injection mold with same color of the lock.
- Key retaining-ensures that padlock is not left unlocked.
- Configuration key card, easy to know personal ID, indicating the corresponding padlock for easy management.
- **Key system:** DIFFER KEY, ALIKE KEY, MASTER & DIFFER KEY.
- **Body material:** Glass fiber reinforced nylon/(composition of ABS+NYLON)
- **Shackle Material:** Nylon Shackle
- **Color:** Red, Yellow, Blue, Green, Orange, White, Brown, Black, Purple
- **Work temperature** 0° - 250° F (-20° - 120° C)
- Also "DO NOT REMOVE", permanently engraved on the lock.
- **Weight** - 80gm



KRM-K-OSLTP-C-NDK
(Nylon Shackle)

KRM-K-OSLTP-C-NDK

BODY HEIGHT (A)	BODY WIDTH (B)	BODY DEPTH(C)	SHACKLE HEIGHT (D)	SHACKLE WIDTH (E)	SHACKLE THICKNESS (F)
45mm	40mm	20mm	38mm	20mm	6mm

KRM CORPORATION

ISO 9001:2015, ISO 14001:2015, ISO 45001:2018
to meet OSHA's Lockout Tagout Standard 29 CFR, 1910.147&1910.269

KM Safetech Private Limited

QUALITY MANAGEMENT SYSTEM ISO 9001:2015
info@krmcorporation.com, info@krmloto.com, krmloto@gmail.com, wadhwarajinder@gmail.com

M: 00 91 9810 291 381, 8800 544 881, T: 00 91 129 - 4021 381

Postal Add: 615, Sector-15A, Faridabad-121007
Regd. Office: 1H/31A, N.I.T. Faridabad-121001 Haryana - NCR (INDIA)

www.krmloto.com | www.krmcorporation.com, www.safetyloto.com
www.lotoappliances.com, www.lockouttagouts.com



OEM Manufacturer & Global Supplier of
 Lockout Tagout & Safety Products

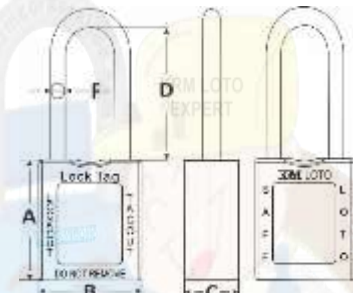
to meet
 OSHA'S Lockout Tagout Standard
 29 CFR, 1910.147&1910.269

www.lockouttagouts.com



KRM LOTO - OSHA SAFETY LOCK TAG PADLOCK – METAL – LONG SHACKLE

- Padlock Is a detachable Lock Passed By An Opening With U-shaped Shackle Used To Protect Against Unauthorized Or Unwanted Stealing. Provided With Latest Locking Mechanism Used To Lock The Different Devices.
- KRM LOTO SAFETY PADLOCK ---"seamless" lock structure durability-Key system: DIFFER KEY, ALIKE KEY, MASTER & DIFFER KEY. The new management key technology,- 10 level management.
- To meet OSHA standard for The Control of Hazardous Energy (Lockout/Tagout), Title 29 Code of Federal Regulations(CFR) Part 1910.147
- With a curve at top to hold the lock with better grip
- Key Head in injection mold with same color of the lock.
- Key retaining-ensures that padlock is not left unlocked.
- Configuration key card, easy to know personal ID, indicating the corresponding padlock for easy management.
- Key system: **DIFFER KEY, ALIKE KEY, MASTER & DIFFER KEY.**
- **Body material:** Glass fiber reinforced nylon/(composition of ABS+NYLON)
- **Shackle Material:** Metal Shackle
- **Color:** Red, Yellow, Blue, Green, Orange, White, Brown, Black, Purple
- Work temperature 0o - 250o F (-20o - 120o C)
- Also "DO NOT REMOVE", permanently engraved on the lock.
- **Weight – 125gm**



KRM-K-OSLTP-DLC-MDK



BODY HEIGHT (A)	BODY WIDTH (B)	BODY DEPTH (C)	SHACKLE HEIGHT (D)	SHACKLE WIDTH (E)	SHACKLE THICKNESS (F)
45 mm	40 mm	20 mm	76 mm	20 mm	6 mm



LOCKOUT/TAGOUT

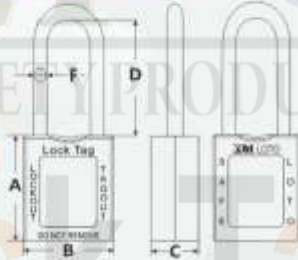


OSHA SAFETY LOCK TAG PADLOCKS – LONG METAL SHACKLE

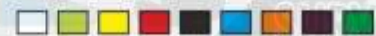
CE Certified

Padlock is a detachable Lock Passed By An Opening With U-shaped Shackle Used To Protect Against Unauthorized Or Unwanted Stealing. Provided With Latest Locking Mechanism Used To Lock The Different Devices.

- **KRM LOTO SAFETY PADLOCK** —“seamless” lock structure durability-Key system: **DIFFER KEY, ALIKE KEY, MASTER & DIFFER KEY.** The new management key technology, - 10 level management.
- To meet OSHA standard for The Control of Hazardous Energy (Lockout/Tagout), Title 29 Code of Federal Regulations(CFR) **Part 1910.147**
- With a curve at top to hold the lock with better grip
- Key Head in injection mold with same color of the lock.
- Key retaining-ensures that padlock is not left unlocked.
- Configuration key card, easy to know personal ID, indicating the corresponding padlock for easy management.
- **Key system:** DIFFER KEY, ALIKE KEY, MASTER & DIFFER KEY.
- **Body material:** Glass fiber reinforced nylon/(composition of ABS+NYLON)
- **Shackle Material:** Metal Shackle
- **Color:** Red, Yellow, Blue, Green, Orange, White, Brown, Black, Purple
- Work temperature 0° - 250° F (-20° - 120° C)
- Also **"DO NOT REMOVE"**, permanently engraved on the lock.
- **Weight** – 125gm



KRM-K-OSLTP-DLC-MDK



KRM-K-OSLTP-DLC-MDK (Metal Shackle)

BODY HEIGHT (A)	BODY WIDTH (B)	BODY DEPTH(C)	SHACKLE HEIGHT (D)	SHACKLE WIDTH (E)	SHACKLE THICKNESS (F)
45mm	40mm	20mm	76mm	20mm	6mm



OEM Manufacturer & Global Supplier of
Lockout Tagout & Safety Products

to meet
OSHA'S Lockout Tagout Standard
29 CFR, 1910.147&1910.269



www.lotoappliances.com



GSTIN No.: 06AAECK2831L1Z1
PAN No.: AAECK2831L
TIN No.: 06824000112
CIN No.: U31903HR2011PTC042508
IEC: AAECK2831L

Telefax: 00 91 129 4021 381, 413 1381 (D)

Regd. Office: 1H/31-A, N.I.T, Faridabad-121001 (Haryana) Postal Office: 615, Sector-15-A, Faridabad-121007-Haryana-NCR-INDIA

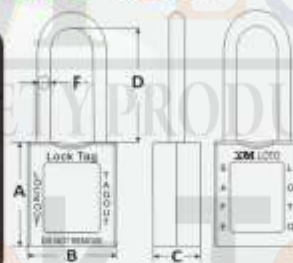
www.krmcorporation.com | www.lockouttagouts.com | www.krmloto.com | www.locktagindia.com | www.lotoappliances.com

LOCKOUT/TAGOUT



KRM-LOTO
SAFETY PRODUCTS

safe loto



KRM-K-OSLTP-DLC-NDK (Nylon Shackle)

OSHA SAFETY LOCK TAG PADLOCKS – LONG NYLON SHACKLE

CE
Certified

Padlock is a detachable Lock Passed By An Opening With U-shaped Shackle Used To Protect Against Unauthorized Or Unwanted Stealing. Provided With Latest Locking Mechanism Used To Lock The Different Devices.

- KRM LOTO SAFETY PADLOCK --- "seamless" lock structure durability-Key system: **DIFFER KEY, ALIKE KEY, MASTER & DIFFER KEY.** The new management key technology, - 10 level management.
- To meet OSHA standard for The Control of Hazardous Energy (Lockout/Tagout), Title 29 Code of Federal Regulations(CFR) **Part 1910.147**
- With a curve at top to hold the lock with better grip
- Key Head in injection mold with same color of the lock.
- Key retaining-ensures that padlock is not left unlocked.
- Configuration key card, easy to know personal ID, indicating the corresponding padlock for easy management.
- **Key system:** DIFFER KEY, ALIKE KEY, MASTER & DIFFER KEY.
- **Body material:** Glass fiber reinforced nylon/(composition of ABS+NYLON)
- **Shackle Material:** Nylon Shackle
- **Color:** Red, Yellow, Blue, Green, Orange, White, Brown, Black, Purple
- Work temperature 0° - 250° F (-20° - 120° C)
- Also "DO NOT REMOVE", permanently engraved on the lock.
- **Weight** - 105gm



KRM-K-OSLTP-DLC-NDK



BODY HEIGHT (A)	BODY WIDTH (B)	BODY DEPTH (C)	SHACKLE HEIGHT (D)	SHACKLE WIDTH (E)	SHACKLE THICKNESS (F)
45mm	40mm	20mm	76mm	20mm	6mm

KRM CORPORATION

ISO 9001 - 9001:2015, ISO 14001 - 14001:2015, ISO 45001 - 45001:2018
to meet OSHA's Lockout Tagout Standard 29 CFR, 1910.147 & 1910.269

KM Safetech Private Limited

QUALITY MANAGEMENT SYSTEM ISO 9001:2015
info@krmcorporation.com, info@krmloto.com, krmloto@gmail.com, wadhwrajinder@gmail.com

M: 00 91 9810 291 381, 8800 544 881, T: 00 91 129 - 4021 381

Postal Add: 615, Sector-15A, Faridabad-121007
Regd. Office: 1H/31A, N.I.T. Faridabad-121001 Haryana - NCR (INDIA)

www.krmloto.com | www.krmcorporation.com, www.safetyloto.com
www.lotoappliances.com, www.lockouttagouts.com



OEM Manufacturer & Global Supplier of
Lockout Tagout & Safety Products

to meet
OSHA'S Lockout Tagout Standard
29 CFR, 1910.147&1910.269



www.lotoappliances.com



www.krmcorporation.com | www.lockouttagouts.com | www.krmloto.com | www.locktagindia.com | www.lotoappliances.com



OSHA SAFETY LOCK TAG PADLOCKS

CE Certified

KRM-K-OSLTP-DLC-MDK
Metal Shackle – 76 mm



KRM-K-OSLTP-C-MDK
Metal Shackle – 38 mm



KRM CORPORATION

ISO 9001:2015, ISO 14001:2015, ISO 45001:2018
to meet OSHA's Lockout Tagout Standard 29 CFR, 1910.147&1910.269

KM Safetech Private Limited

QUALITY MANAGEMENT SYSTEM ISO 9001:2015

M: 00 91 9810 291 381, 8800 544 881, T: 00 91 129 - 4021 381

info@krmcorporation.com, info@krmloto.com, krmloto@gmail.com, wadhwrajinder@gmail.com

Postal Add: 615, Sector-15A, Faridabad-121007
Regd. Office: 1H/31A, N.I.T. Faridabad-121001 Haryana - NCR (INDIA)

www.krmloto.com | www.krmcorporation.com, www.safetyloto.com
www.lotoappliances.com, www.lockouttagouts.com



OEM Manufacturer & Global Supplier of
Lockout Tagout & Safety Products

to meet
OSHA'S Lockout Tagout Standard
29 CFR, 1910.147&1910.269



www.lotoappliances.com



OSHA SAFETY LOCK TAG PADLOCKS

CE Certified

KRM-K-OSLTP-DLC-NDK
Nylon Shackle - 76 mm



KRM-K-OSLTP-C-NDK
Nylon Shackle - 38 mm



KRM CORPORATION

ISO 9001 - 9001:2015, ISO EMS 14001:2015, ISO OHSMS 45001:2018
to meet OSHA's Lockout Tagout Standard 29 CFR, 1910.147&1910.269

KM Safetech Private Limited

QUALITY MANAGEMENT SYSTEM ISO 9001:2015

M: 00 91 9810 291 381, 8800 544 881, T: 00 91 129 - 4021 381

info@krmcorporation.com, info@krmloto.com, krmloto@gmail.com, wadharajinder@gmail.com

Postal Add: 615, Sector-15A, Faridabad-121007
Regd. Office: 1H/31A, N.I.T, Faridabad-121001 Haryana - NCR (INDIA)

www.krmloto.com www.krmcorporation.com, www.safetyloto.com
www.lotoappliances.com, www.lockouttagouts.com



OEM Manufacturer & Global Supplier of
Lockout Tagout & Safety Products

to meet
OSHA'S Lockout Tagout Standard
29 CFR, 1910.147&1910.269



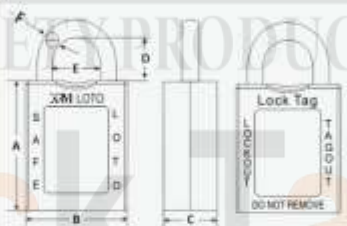
www.locktagindia.com



LOCKOUT/TAGOUT



OSHA SAFETY ISOLATION PADLOCK – METAL SHACKLE



- Padlock Is a detachable Lock Passed By An Opening With U-shaped Shackle Used To Protect Against Unauthorized Or Unwanted Stealing. Provided With **Latest Locking Mechanism** Used To Lock The Different Devices.
- KRM LOTO SAFETY PADLOCK ---"seamless" lock structure durability-Key system: **DIFFER KEY, ALIKE KEY, MASTER & DIFFER KEY.** The new management key technology,- 6 level management, 10 level management respectively.
 - To meet OSHA standard for The Control of Hazardous Energy (Lockout/Tagout), Title **29 Code of Federal Regulations(CFR) Part 1910.147**
 - Key retaining-ensures that padlock is not left unlocked.
 - Configuration key card, easy to know personal ID, indicating the corresponding padlock for easy management.
 - **Key system:** DIFFER KEY, ALIKE KEY, MASTER & DIFFER KEY.
 - **Body material:** Glass fiber reinforced nylon/(composition of ABS+NYLON)
 - **Shackle Length – 25 mm**
 - **Shackle Material:** Heavy coated carbide steel
 - **Color –** Red, Yellow, Blue, Green, Orange, White, Brown, Black, Purple
 - **Work temperature 0° - 250° F (-20° - 120° C)**
 - **Weight – 90 gm**



KRM-K-OSSPL-DK
(Metal Shackle)



KRM-K-OSSPL-DK

BODY HEIGHT (A)	BODY WIDTH (B)	BODY DEPTH(C)	SHACKLE HEIGHT (D)	SHACKLE WIDTH (E)	SHACKLE THICKNESS (F)
45mm	40mm	20mm	25mm	20mm	6mm



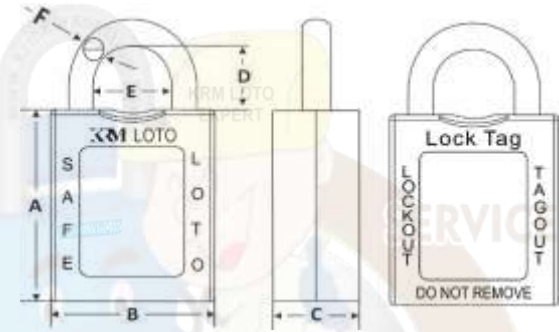
OEM Manufacturer & Global Supplier of
 Lockout Tagout & Safety Products

to meet
 OSHA'S Lockout Tagout Standard
 29 CFR, 1910.147&1910.269



KRM LOTO - OSHA SAFETY ISOLATION PADLOCK – NYLON SHACKLE

- Padlock Is a detachable Lock Passed By An Opening With U-shaped Shackle Used To Protect Against Unauthorized Or Unwanted Stealing. Provided With Latest Locking Mechanism Used To Lock The Different Devices.
- KRM LOTO SAFETY PADLOCK ---"seamless" lock structure durability-Key system: DIFFER KEY, ALIKE KEY, MASTER & DIFFER KEY. The new management key technology,- 6 level management, 10 level management respectively.
- To meet OSHA standard for The Control of Hazardous Energy (Lockout/Tagout), Title **29 Code of Federal Regulations(CFR) Part 1910.147**
- Key retaining-ensures that padlock is not left unlocked.
- Configuration key card, easy to know personal ID, indicating the corresponding padlock for easy management.
- Key system: **DIFFER KEY, ALIKE KEY, MASTER & DIFFER KEY.**
- **Body material:** Glass fiber reinforced nylon/(composition of ABS+NYLON)
- **Shackle Material** – Nylon.
- **Color** – Red, Yellow, Blue, Green, Orange, White, Brown, Black, Purple
- Work temperature 0o - 250o F (-20o - 120o C)
- **Weight** – 70gm



KRM-K-OSSPL-DE



BODY HEIGHT (A)	BODY WIDTH (B)	BODY DEPTH (C)	SHACKLE HEIGHT (D)	SHACKLE WIDTH (E)	SHACKLE THICKNESS (F)
45 mm	40 mm	20 mm	25 mm	20 mm	6 mm



OEM Manufacturer & Global Supplier of
Lockout Tagout & Safety Products

to meet
OSHA'S Lockout Tagout Standard
29 CFR, 1910.147&1910.269



www.locktagindia.com



LOCKOUT/TAGOUT

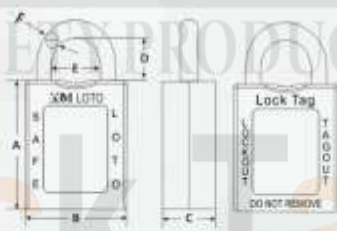


OSHA SAFETY ISOLATION PADLOCK – NYLON SHACKLE

CE Certified

Padlock is a detachable Lock Passed By An Opening With U-shaped Shackle Used To Protect Against Unauthorized Or Unwanted Stealing. Provided With **Latest Locking Mechanism** Used To Lock The Different Devices.

- KRM LOTO SAFETY PADLOCK ---"seamless" lock structure durability-Key system: **DIFFER KEY, ALIKE KEY, MASTER & DIFFER KEY.** The new management key technology.- 6 level management, 10 level management respectively.
- To meet OSHA standard for The Control of Hazardous Energy (Lockout/Tagout), Title 29 Code of Federal Regulations(CFR) **Part 1910.147**
- Key retaining-ensures that padlock is not left unlocked.
- Configuration key card, easy to know personal ID, indicating the corresponding padlock for easy management.
- **Key system:** DIFFER KEY, ALIKE KEY, MASTER & DIFFER KEY.
- **Body material:** Glass fiber reinforced nylon/(composition of ABS+NYLON)
- **Shackle Length** – 25 mm
- **Shackle Material** – Nylon.
- **Color** – Red, Yellow, Blue, Green, Orange, White, Brown, Black, Purple
- **Work temperature** 0° - 250° F (-20° - 120° C)
- **Weight** – 70gm



KRM-K-OSSPL-DE
(Nylon Shackle)

Color swatches: white, yellow, red, black, blue, orange, purple, green. **KRM-K-OSSPL-DE**

BODY HEIGHT (A)	BODY WIDTH (B)	BODY DEPTH(C)	SHACKLE HEIGHT (D)	SHACKLE WIDTH (E)	SHACKLE THICKNESS (F)
45mm	40mm	20mm	25mm	20mm	6mm



OEM Manufacturer & Global Supplier of
 Lockout Tagout & Safety Products

to meet
 OSHA'S Lockout Tagout Standard
 29 CFR, 1910.147&1910.269

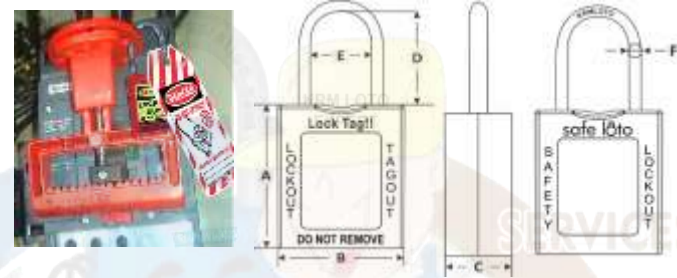


Regd. Office:1H/31-A, N.I.T, Faridabad-121001 (Haryana) Postal Office:615, Sector-15-A, Faridabad-121007-Haryana-NCR-INDIA

www.krmcorporation.com | www.lockouttagouts.com | www.krmloto.com | www.locktagindia.com | www.lotoappliances.com

KRM LOTO - OSHA SAFETY THIN SHACKLE PADLOCK 4.7MM 304 GRADE

- Padlock Is a detachable Lock Passed By An Opening With U-shaped Shackle Used To Protect Against Unauthorized Or Unwanted Stealing. Provided With Latest Locking Mechanism Used To Lock The Different Devices.
- KRM LOTO SAFETY PADLOCK ---"seamless" lock structure durability-Key system: DIFFER KEY, MASTER & DIFFER KEY. The new management key technology,- 10 level management.
- To meet OSHA standard for The Control of Hazardous Energy (Lockout/Tagout), Title 29 Code of Federal Regulations(CFR)Part 1910.147
- With a curve at top to hold the lock with better grip
- Key Head in injection mold with same color of the lock.
- Key retaining-ensures that padlock is not left unlocked.
- Configuration key card, easy to know personal ID, indicating the corresponding padlock for easy management.
- **Key system:** DIFFER KEY, MASTER & DIFFER KEY.
- **Body material:** Glass fiber reinforced nylon/(composition of ABS+NYLON)
- **Shackle material:** 304 Grade Steel Shackle high quality corrosion resistant .
- **Color:** Red, Yellow, Blue, Green, Grey
- Work temperature 0o - 250o F (-20o - 120o C)
- Also "DO NOT REMOVE", permanently engraved on the lock.
- **Weight :** 95gm



KRM-K-OSLTP-SSDK-47(DIFFER KEY)

KRM-K-OSLTP-SSDK-47+M(MASTER KEY)



BODY HEIGHT (A)	BODY WIDTH (B)	BODY DEPTH (C)	SHACKLE HEIGHT (D)	SHACKLE WIDTH (E)	SHACKLE THICKNESS (F)
45 mm	40 mm	20 mm	38 mm	20 mm	4.7mm



OEM Manufacturer & Global Supplier of
Lockout Tagout & Safety Products

to meet
OSHA'S Lockout Tagout Standard
29 CFR, 1910.147&1910.269

www.lockouttagouts.com



Regd. Office:1H/31-A, N.I.T, Faridabad-121001 (Haryana) Postal Office:615, Sector-15-A, Faridabad-121007-Haryana-NCR-INDIA

www.krmcorporation.com | www.lockouttagouts.com | www.krmloto.com | www.locktagindia.com | www.lotoappliances.com

LOCKOUT/TAGOUT



CE Certified

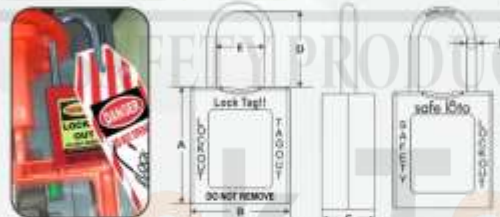
OSHA SAFETY THIN SHACKLE PADLOCK 4.7MM 304 GRADE

Padlock is a detachable Lock Passed By An Opening With U-shaped Shackle Used To Protect Against Unauthorized Or Unwanted Stealing. Provided With Latest Locking Mechanism Used To Lock The Different Devices.

- KRM LOTO SAFETY PADLOCK ---"seamless" lock structure durability-Key system: DIFFER KEY, MASTER & DIFFER KEY. The new management key technology- 10 level management.
- To meet OSHA standard for The Control of Hazardous Energy (Lockout/Tagout), Title 29 Code of Federal Regulations(CFR)

Part 1910.147

- With a curve at top to hold the lock with better grip
- Key Head in injection mold with same color of the lock.
- Key retaining-ensures that padlock is not left unlocked.
- Configuration key card, easy to know personal ID, indicating the corresponding padlock for easy management.
- Key system: DIFFER KEY, MASTER & DIFFER KEY.
- Body material: Glass fiber reinforced nylon/(composition of ABS+NYLON)
- Shackle material: 304 Grade Steel Shackle high quality corrosion resistant.
- Color: Red, Yellow, Blue, Green, Grey
- Work temperature 0° - 250° F (-20° - 120° C)
- Also "DO NOT REMOVE", permanently engraved on the lock.
- Weight - 95gm



KRM-K-OSLTP-SSDK-47
(Steel Shackle)

KRM-K-OSLTP-SSDK-47(DIFFER KEY) KRM-K-OSLTP-SSDK-47+M(MASTER KEY)

BODY HEIGHT (A)	BODY WIDTH (B)	BODY DEPTH(C)	SHACKLE HEIGHT (D)	SHACKLE WIDTH (E)	SHACKLE THICKNESS (F)
45mm	40mm	20mm	38mm	20mm	4.7mm

KRM CORPORATION

ISO 9001:2015, ISO 14001:2015, ISO 45001:2018
to meet OSHA's Lockout Tagout Standard 29 CFR, 1910.147&1910.269

Postal Add: 615, Sector-15A, Faridabad-121007 Haryana - NCR (INDIA)
Regd. Office: 1H/31A, N.I.T. Faridabad-121001

KM Safetech Private Limited

QUALITY MANAGEMENT SYSTEM ISO 9001:2015

info@krmcorporation.com, info@krmloto.com, krmloto@gmail.com, wadhwrajinder@gmail.com
www.krmcorporation.com, www.safetyloto.com, www.lotoappliances.com, www.lockouttagouts.com

M: 00 91 9810 291 381, 8800 544 881, T: 00 91 129 - 4021 381

www.krmloto.com www.lotoappliances.com, www.lockouttagouts.com



OEM Manufacturer & Global Supplier of
 Lockout Tagout & Safety Products

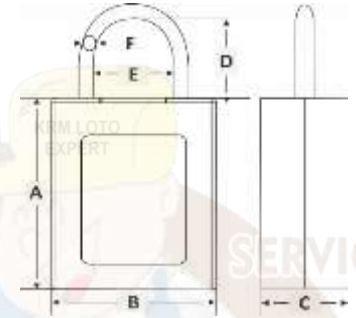
to meet
 OSHA'S Lockout Tagout Standard
 29 CFR, 1910.147&1910.269

www.lotoappliances.com



KRM LOTO - OSHA SAFETY LOCK TAG PADLOCK – WITH STAINLESS STEEL SHACKLE

- A Padlock is a detachable lock passed by an opening with U Shaped shackle used to protect against unauthorized or unwanted stealing. Provided with LATEST LOCKING MECHANISM used to lock the different devices.
- KRM LOTO SAFETY PADLOCK---- "Seamless" lock structure durability - key system: DIFFER KEY, ALIKE KEY, MASTER & DIFFER KEY. The new management key technology, -10 level management.
- To meet OSHA standard for The Control of Hazardous Energy (Lockout/Tagout), Title 29 Code of Federal Regulations(CFR)Part 1910.147
- High quality with waterproof, corrosion resistant and strong adhesive.
- Key retaining ensures that padlock is not left unlocked. Configuration key card, easy know personal ID indicating the corresponding padlock for easy management.
- KEY SYSTEM - Alike Key, Master & Differ Key, Differ Key-on requirement
- **Body Material** - Glass fiber reinforced nylon / (Composition of ABS + Nylon).
- **Shackle Material** – Stainless Steel.
- **Color** - Red, Blue, Green, Yellow, Orange, White, Brown, Black, Purple.
- Work temperature 0o - 250o F (-20o - 120o C)
- **Weight** – 80gm



KRM-K-OSLTP-SSDK-426



BODY HEIGHT (A)	BODY WIDTH (B)	BODY DEPTH (C)	SHACKLE HEIGHT (D)	SHACKLE WIDTH (E)	SHACKLE THICKNESS (F)
45 mm	40 mm	20 mm	26 mm	20 mm	4 mm



OEM Manufacturer & Global Supplier of
Lockout Tagout & Safety Products

to meet
OSHA'S Lockout Tagout Standard
29 CFR, 1910.147&1910.269



www.lockouttagouts.com



LOCKOUT/TAGOUT



KRM-LOTO
SAFETY PRODUCTS

safe loto

OSHA SAFETY LOCK TAG PADLOCKS-STEEL SHACKLE

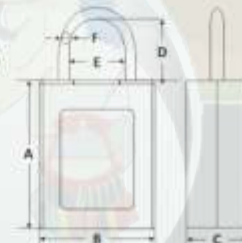


A Padlock is a detachable lock passed by an opening with U Shaped shackle used to protect against unauthorized or unwanted stealing. Provided with **LATEST LOCKING MECHANISM** used to lock the different devices.

- KRM LOTO SAFETY PADLOCK---- "Seamless" lock structure durability - key system: **DIFFER KEY, ALIKE KEY, MASTER & DIFFER KEY**. The new management key technology, -10 level management.
- To meet OSHA standard for The Control of Hazardous Energy (Lockout/Tagout), Title **29 Code of Federal Regulations(CFR)Part 1910.147**
- High quality with waterproof, corrosion resistant and strong adhesive.
- Key retaining ensures that padlock is not left unlocked. Configuration key card, easy to know personal ID indicating the corresponding padlock for easy management.
- **KEY SYSTEM** - Alike Key, Master & Differ Key, Differ Key-on requirement
- **Body Material** - Glass fiber reinforced nylon / (Composition of ABS + Nylon).
- **Shackle Material** - Stainless Steel.
- **Color** - Red, Blue, Green, Yellow, Orange, White, Brown, Black, Purple.
- **Work temperature** 0° - 250° F (-20° - 120° C)
- **Weight** - 80gm



KRM-K-OSLTP-SSDK-426



ITEM CODE	BODY HEIGHT (A)	BODY WIDTH (B)	BODY DEPTH (C)	SHACKLE HEIGHT (D)	SHACKLE WIDTH (E)	SHACKLE THICKNESS (F)
KRM-K-OSLTP-SSDK-426	45mm	40mm	20mm	26mm	20mm	4mm

KRM CORPORATION

ISO QMS - 9001:2015, ISO EMS - 14001:2015, ISO OHSMS - 45001:2015
to meet OSHA's Lockout Tagout Standard 29 CFR, 1910.147 & 1910.269

KM Safetech Private Limited

QUALITY MANAGEMENT SYSTEM ISO QMS 9001:2015

M: 00 91 9810 291 381, 8800 544 881, T: 00 91 129 - 4021 381

info@krmcorporation.com, info@krmloto.com, krmloto@gmail.com, wadhwrajinder@gmail.com

Postal Add: 615, Sector-15A, Faridabad-121007 Haryana - NCR (INDIA)
Regd. Office: 1H/31A, N.I.T. Faridabad-121001

www.krmloto.com www.krmcorporation.com, www.safetyloto.com
www.lotoappliances.com, www.lockouttagouts.com



OEM Manufacturer & Global Supplier of
 Lockout Tagout & Safety Products

to meet
 OSHA'S Lockout Tagout Standard
 29 CFR, 1910.147&1910.269

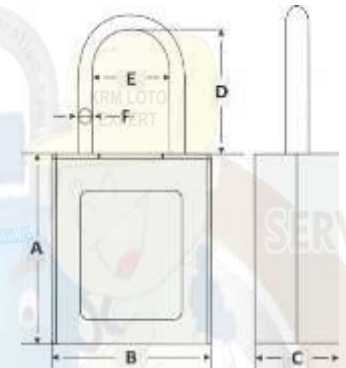


www.lotoappliances.com

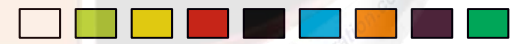


KRM LOTO - OSHA SAFETY LOCK TAG PADLOCK – WITH STAINLESS STEEL SHACKLE

- A Padlock is a detachable lock passed by an opening with U Shaped shackle used to protect against unauthorized or unwanted stealing. Provided with LATEST LOCKING MECHANISM used to lock the different devices.
- KRM LOTO SAFETY PADLOCK---- "Seamless" lock structure durability - key system: DIFFER KEY, ALIKE KEY, MASTER & DIFFER KEY.
- The new management key technology, - 10 level management.
- To meet OSHA standard for The Control of Hazardous Energy (Lockout/Tagout), Title 29 Code of Federal Regulations(CFR)Part 1910.147
- High quality with waterproof, corrosion resistant and strong adhesive.
- Key retaining ensures that padlock is not left unlocked. Configuration key card, easy to know personal ID indicating the corresponding padlock for easy management.
- KEY SYSTEM - Alike Key, Master & Differ Key, Differ Key-on requirement
- Body Material - Glass fiber reinforced nylon / (Composition of ABS + Nylon).
- Shackle Material – Stainless Steel.
- Color - Red, Blue, Green, Yellow, Orange, White, Brown, Black, Purple.
- Work temperature 0o - 250o F (-20o - 120o C)
- Weight – 95gm



KRM-K-OSLTP-SSDK-4



BODY HEIGHT (A)	BODY WIDTH (B)	BODY DEPTH (C)	SHACKLE HEIGHT (D)	SHACKLE WIDTH (E)	SHACKLE THICKNESS (F)
45 mm	40 mm	20 mm	38 mm	20 mm	4 mm



OEM Manufacturer & Global Supplier of
Lockout Tagout & Safety Products

to meet
OSHA'S Lockout Tagout Standard
29 CFR, 1910.147&1910.269

Email: info@krmloto.com, info@krmcorporation.com, krmloto@gmail.com

Regd. Office: 1H/31-A, N.I.T, Faridabad-121001 (Haryana) Postal Office: 615, Sector-15-A, Faridabad-121007-Haryana-NCR-INDIA

www.krmcorporation.com

www.lockouttagouts.com

www.krmloto.com

www.locktagindia.com

www.lotoappliances.com



www.lotoappliances.com



LOCKOUT/TAGOUT

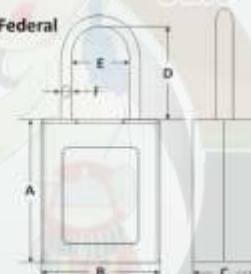


OSHA SAFETY LOCK TAG PADLOCKS-STEEL SHACKLE

CE Certified

A Padlock is a detachable lock passed by an opening with U Shaped shackle used to protect against unauthorized or unwanted stealing. Provided with **LATEST LOCKING MECHANISM** used to lock the different devices.

- KRM LOTO SAFETY PADLOCK--- "Seamless" lock structure durability - key system: **DIFFER KEY, ALIKE KEY, MASTER & DIFFER KEY**. The new management key technology, - 10 level management.
- To meet OSHA standard for The Control of Hazardous Energy (Lockout/Tagout), Title **29 Code of Federal Regulations(CFR)Part 1910.147**
- High quality with waterproof, corrosion resistant and strong adhesive.
- Key retaining ensures that padlock is not left unlocked. Configuration key card, easy to know personal ID indicating the corresponding padlock for easy management.
- **KEY SYSTEM** - Alike Key, Master & Differ Key, Differ Key-on requirement
- **Body Material** - Glass fiber reinforced nylon / (Composition of ABS + Nylon).
- **Shackle Material** - Stainless Steel.
- **Color** - Red, Blue, Green, Yellow, Orange, White, Brown, Black, Purple.
- Work temperature 0° - 250° F (-20° - 120° C)
- **Weight** - 95gm



KRM-K-OSLTP-SSDK-4



ITEM CODE	BODY HEIGHT (A)	BODY WIDTH (B)	BODY DEPTH (C)	SHACKLE HEIGHT (D)	SHACKLE WIDTH (E)	SHACKLE THICKNESS (F)
KRM-K-OSLTP-SSDK-4	45mm	40mm	20mm	38mm	20mm	4mm



OEM Manufacturer & Global Supplier of
 Lockout Tagout & Safety Products

to meet
 OSHA'S Lockout Tagout Standard
 29 CFR, 1910.147&1910.269



www.locktagindia.com



KRM LOTO - OSHA SAFETY LOCK TAG PADLOCK- 10 Level Key Management

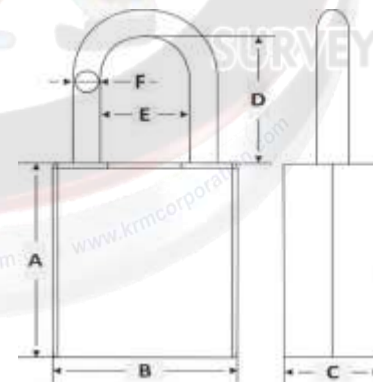
- Padlock Is a detachable Lock Passed By An Opening With U-shaped Shackle Used To Protect Against Unauthorized Or Unwanted Stealing. Provided With Latest Locking Mechanism Used To Lock The Different Devices.
- KRM LOTO SAFETY PADLOCK ---"seamless" lock structure durability-Key system: DIFFER KEY, ALIKE KEY, MASTER & DIFFER KEY. The new management key technology, - 10 level management.
- To meet OSHA standard for The Control of Hazardous Energy (Lockout/Tagout), Title **29 Code of Federal Regulations(CFR)Part 1910.147**
- Key retaining-ensures that padlock is not left unlocked.
- Configuration key card, easy to know personal ID, indicating the corresponding padlock for easy management.
- Key system: **DIFFER KEY, ALIKE KEY, MASTER & DIFFER KEY.**
- **Body material:** Glass fiber reinforced nylon/(composition of ABS+NYLON)
- **Shackle Material:** Heavy coated carbide steel
- **Color:** Red, Yellow, Blue, Green, Orange, White, Brown, Black, Purple
- Work temperature 0o - 250o F (-20o - 120o C)
- Also "**DO NOT REMOVE**", permanently engraved on the lock.
- **Weight** – 100gm



KRM-K-OSLTP-MDK



BODY HEIGHT (A)	BODY WIDTH (B)	BODY DEPTH (C)	SHACKLE HEIGHT (D)	SHACKLE WIDTH (E)	SHACKLE THICKNESS (F)
45 mm	40 mm	20 mm	38 mm	20 mm	6 mm





OEM Manufacturer & Global Supplier of
Lockout Tagout & Safety Products

to meet
OSHA'S Lockout Tagout Standard
29 CFR, 1910.147&1910.269



LOCKOUT/TAGOUT



OSHA SAFETY LOCK TAG PADLOCK- 10 LEVEL KEY MANAGEMENT



Padlock is a detachable Lock Passed By An Opening With U-shaped Shackle Used To Protect Against Unauthorized Or Unwanted Stealing. Provided With **Latest Locking Mechanism** Used To Lock The Different Devices.

- KRM LOTO SAFETY PADLOCK —"seamless" lock structure durability-Key system: **DIFFER KEY, ALIKE KEY, MASTER & DIFFER KEY.** The new management key technology,- 10 level management.
- To meet OSHA standard for The Control of Hazardous Energy (Lockout/Tagout), Title 29 Code of Federal Regulations(CFR)Part 1910.147
- Key retaining-ensures that padlock is not left unlocked.
- Configuration key card, easy to know personal ID, indicating the corresponding padlock for easy management.
- **Key system:** DIFFER KEY, ALIKE KEY, MASTER & DIFFER KEY.
- **Body material:** Glass fiber reinforced nylon/(composition of ABS+NYLON)
- **Shackle Material:** Heavy coated carbide steel
- **Color:** Red, Yellow, Blue, Green, Orange, White, Brown, Black, Purple
- Work temperature 0° - 250° F (-20° - 120° C)
- Also "DO NOT REMOVE", permanently engraved on the lock.
- **Weight** - 100gm



KRM-K-OSLTP-MDK



BODY HEIGHT (A)	BODY WIDTH (B)	BODY DEPTH(C)	SHACKLE HEIGHT (D)	SHACKLE WIDTH (E)	SHACKLE THICKNESS (F)
45mm	40mm	20mm	38mm	20mm	6mm



OEM Manufacturer & Global Supplier of
 Lockout Tagout & Safety Products

to meet
 OSHA'S Lockout Tagout Standard
 29 CFR, 1910.147&1910.269



www.lotoappliances.com

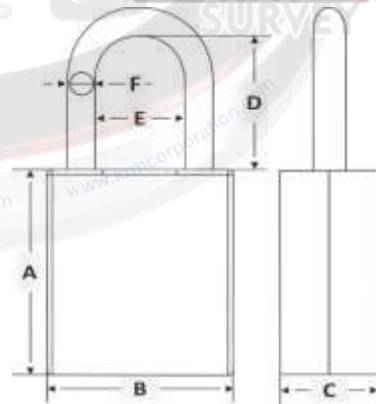


KRM LOTO - OSHA SAFETY LOCK TAG PADLOCK 10 Level Key Management

- Padlock Is a detachable Lock Passed By An Opening With U-shaped Shackle Used To Protect Against Unauthorized Or Unwanted Stealing. Provided With Latest Locking Mechanism Used To Lock The Different Devices.
- KRM LOTO SAFETY PADLOCK ---"seamless" lock structure durability-Key system: DIFFER KEY, ALIKE KEY, MASTER & DIFFER KEY. The new management key technology,- 10 level management.
- To meet OSHA standard for The Control of Hazardous Energy (Lockout/Tagout), Title 29 Code of Federal Regulations(CFR)Part 1910.147
- Key retaining-ensures that padlock is not left unlocked.
- Configuration key card, easy to know personal ID, indicating the corresponding padlock for easy management.
- **Key system:** DIFFER KEY, ALIKE KEY, MASTER & DIFFER KEY.
- **Body material:** Glass fiber reinforced nylon/(composition of ABS+NYLON)
- **Shackle Material:** Nylon
- **Color:** Red, Yellow, Blue, Green, Orange, White, Brown, Black, Purple
- Work temperature 0o - 250o F (-20o - 120o C)
- Also "DO NOT REMOVE", permanently engraved on the lock.
- **Weight** – 90gm



KRM-K-OSLTP-NDK



BODY HEIGHT (A)	BODY WIDTH (B)	BODY DEPTH (C)	SHACKLE HEIGHT (D)	SHACKLE WIDTH (E)	SHACKLE THICKNESS (F)
45 mm	40 mm	20 mm	38 mm	20 mm	6 mm



OEM Manufacturer & Global Supplier of
Lockout Tagout & Safety Products

to meet
OSHA'S Lockout Tagout Standard
29 CFR, 1910.147&1910.269

www.lockouttagouts.com



Regd. Office: 1H/31-A, N.I.T, Faridabad-121001 (Haryana) Postal Office: 615, Sector-15-A, Faridabad-121007-Haryana-NCR-INDIA

www.krmcorporation.com | www.lockouttagouts.com | www.krmloto.com | www.locktagindia.com | www.lotoappliances.com

LOCKOUT/TAGOUT



OSHA SAFETY LOCK TAG PADLOCK- 10 LEVEL KEY MANAGEMENT

CE Certified

Padlock Is a detachable Lock Passed By An Opening With U-shaped Shackle Used To Protect Against Unauthorized Or Unwanted Stealing. Provided With Latest Locking Mechanism Used To Lock The Different Devices.

- KRM LOTO SAFETY PADLOCK ---"seamless" lock structure durability-Key system: DIFFER KEY, ALIKE KEY, MASTER & DIFFER KEY. The new management key technology,- 10 level management.
- To meet OSHA standard for The Control of Hazardous Energy (Lockout/Tagout), Title 29 Code of Federal Regulations(CFR)Part 1910.147
- Key retaining-ensures that padlock is not left unlocked.
- Configuration key card, easy to know personal ID, indicating the corresponding padlock for easy management.
- Key system: DIFFER KEY, ALIKE KEY, MASTER & DIFFER KEY.
- Body material: Glass fiber reinforced nylon/(composition of ABS+NYLON)
- Shackle Material: Nylon
- Color: Red, Yellow, Blue, Green, Orange, White, Brown, Black, Purple
- Work temperature 0° - 250° F (-20° - 120° C)
- Also "DO NOT REMOVE", permanently engraved on the lock.
- Weight = 90gm



KRM-K-OSLTP-NDK



KRM-K-OSLTP-NDK

BODY HEIGHT (A)	BODY WIDTH (B)	BODY DEPTH(C)	SHACKLE HEIGHT (D)	SHACKLE WIDTH (E)	SHACKLE THICKNESS (F)
45mm	40mm	20mm	38mm	20mm	6mm



OEM Manufacturer & Global Supplier of
Lockout Tagout & Safety Products

to meet
OSHA'S Lockout Tagout Standard
29 CFR, 1910.147&1910.269



www.locktagindia.com



LOCKOUT/TAGOUT



OSHA SAFETY LOCK TAG PADLOCK – METAL – LONG SHACKLE

CE Certified



KRM-K-DLSPL

Padlock is a detachable Lock Passed By An Opening With U-shaped Shackle Used To Protect Against Unauthorized Or Unwanted Stealing. Provided With Latest Locking Mechanism Used To Lock The Different Devices.

- KRM LOTO SAFETY PADLOCK ---"seamless" lock structure durability-Key system: **DIFFER KEY, ALIKE KEY, MASTER & DIFFER KEY.** The new management key technology, - 10 level management.
- To meet OSHA standard for The Control of Hazardous Energy (Lockout/Tagout), Title 29 Code of Federal Regulations(CFR)Part 1910.147
- Key retaining-ensures that padlock is not left unlocked.
- Configuration key card, easy to know personal ID, indicating the corresponding padlock for easy management.
- **Key system:** DIFFER KEY, ALIKE KEY, MASTER & DIFFER KEY.
- **Body material:** Glass fiber reinforced nylon/(composition of AB5+NYLON)
- **Shackle Material:** Heavy coated carbide steel
- **Color:** Red, Yellow, Blue, Green, Orange, White, Brown, Black, Purple
- **Work temperature** 0° - 250° F (-20° - 120° C)
- Also "DO NOT REMOVE", permanently engraved on the lock.
- **Weight** – 125gm



BODY HEIGHT (A)	BODY WIDTH (B)	BODY DEPTH(C)	SHACKLE HEIGHT (D)	SHACKLE WIDTH (E)	SHACKLE THICKNESS (F)
45mm	40mm	20mm	76mm	20mm	6mm



OEM Manufacturer & Global Supplier of
Lockout Tagout & Safety Products

to meet
OSHA'S Lockout Tagout Standard
29 CFR, 1910.147&1910.269



www.lotoappliances.com



Regd. Office: 1H/31-A, N.I.T, Faridabad-121001 (Haryana) Postal Office: 615, Sector-15-A, Faridabad-121007-Haryana-NCR-INDIA

www.krmcorporation.com | www.lockouttagouts.com | www.krmloto.com | www.locktagindia.com | www.lotoappliances.com

LOCKOUT/TAGOUT



OSHA SAFETY LOCK TAG PADLOCK – NYLON – LONG SHACKLE

CE Certified



KRM-K-DLSPL-DE

Padlock is a detachable Lock Passed By An Opening With U-shaped Shackle Used To Protect Against Unauthorized Or Unwanted Stealing. Provided With Latest Locking Mechanism Used To Lock The Different Devices.

- KRM LOTO SAFETY PADLOCK ---"seamless" lock structure durability-Key system: **DIFFER KEY, ALIKE KEY, MASTER & DIFFER KEY.** The new management key technology,- 10 level management.
- To meet OSHA standard for The Control of Hazardous Energy (Lockout/Tagout), Title 29 Code of Federal Regulations(CFR)Part 1910.147
- Key retaining-ensures that padlock is not left unlocked.
- Configuration key card, easy to know personal ID, indicating the corresponding padlock for easy management.
- Key system: DIFFER KEY, ALIKE KEY, MASTER & DIFFER KEY.
- Body material: Glass fiber reinforced nylon/(composition of ABS+NYLON)
- Shackle Material: Nylon
- Color: Red, Yellow, Blue, Green, Orange, White, Brown, Black, Purple
- Work temperature 0° - 250° F (-20° - 120° C)
- Also "DO NOT REMOVE", permanently engraved on the lock.
- Weight – 105gm



BODY HEIGHT (A)	BODY WIDTH (B)	BODY DEPTH(C)	SHACKLE HEIGHT (D)	SHACKLE WIDTH (E)	SHACKLE THICKNESS (F)
45mm	40mm	20mm	76mm	20mm	6mm

KRM CORPORATION

ISO 9001: 2015, ISO EMS 14001: 2015, ISO 45001: 2018
to meet OSHA's Lockout Tagout Standard 29 CFR, 1910.147 & 1910.269

KM Safetech Private Limited

QUALITY MANAGEMENT SYSTEM ISO 9001:2015

M: 00 91 9810 291 381, 8800 544 881, T: 00 91 129 - 4021 381

info@krmcorporation.com, info@krmloto.com, krmloto@gmail.com, wadhwrajinder@gmail.com

Postal Add: 615, Sector-15A, Faridabad-121007 Haryana - NCR (INDIA)
Regd. Office: 1H/31A, N.I.T, Faridabad-121001

www.krmloto.com www.krmcorporation.com, www.safeteloto.com
www.lotoappliances.com, www.lockouttagouts.com



OEM Manufacturer & Global Supplier of
Lockout Tagout & Safety Products

to meet
OSHA'S Lockout Tagout Standard
29 CFR, 1910.147&1910.269

www.lockoutappliances.com



LOCKOUT/TAGOUT



OSHA SAFETY LOCK TAG PADLOCK- (6 LEVEL KEY MANAGEMENT)



A Padlock is a detachable lock passed by an opening with U Shaped shackle used to protect against unauthorized or unwanted stealing. Provided with LATEST LOCKING MECHANISM used to lock the different devices.

- KRM LOTO SAFETY PADLOCK— "Seamless" lock structure durability - key system: DIFFER KEY, ALIKE KEY, MASTER & DIFFER KEY. The new management key technology, - 6 level management.
- To meet OSHA standard for The Control of Hazardous Energy (Lockout/Tagout), Title 29 Code of Federal Regulations(CFR)Part 1910.147
- High quality with waterproof, corrosion resistant and strong adhesive.
- Key retaining ensures that padlock is not left unlocked. Configuration key card, easy to know personal ID indicating the corresponding padlock for easy management.
- KEY SYSTEM - Alike Key, Master & Differ Key, Differ Key-on requirement
- Body Material - Glass fiber reinforced nylon / (Composition of ABS + Nylon).
- Shackle Material - Heavy Coated Carbide steel.
- Color - Red, Blue, Green, Yellow, Orange, White, Brown, Black, Purple.
- Weight - 90gm
- Work temperature 0° - 250° F (-20° - 120° C)



KRM-K-LSPL-DK



BODY HEIGHT (A)	BODY WIDTH (B)	BODY DEPTH(C)	SHACKLE HEIGHT (D)	SHACKLE WIDTH (E)	SHACKLE THICKNESS (F)
45mm	35mm	20mm	38mm	20mm	6mm

KRM CORPORATION
ISO 9001 : 2015, ISO 14001 : 2015, ISO 45001 : 2018
to meet OSHA's Lockout Tagout Standard 29 CFR, 1910.147&1910.269

KM Safetech Private Limited
QUALITY MANAGEMENT SYSTEM ISO 9001:2015
info@krmcorporation.com, info@krmloto.com, krmloto@gmail.com, wadhwrajinder@gmail.com

M: 00 91 9810 291 381, 8800 544 881, T: 00 91 129 - 4021 381

Postal Add: 615, Sector-15A, Faridabad-121007 Haryana - NCR (INDIA)
Regd. Office: 1H/31A, N.I.T. Faridabad-121001

www.krmloto.com www.krmcorporation.com, www.safeteloto.com
www.lotoappliances.com, www.lockouttagouts.com



OEM Manufacturer & Global Supplier of
 Lockout Tagout & Safety Products

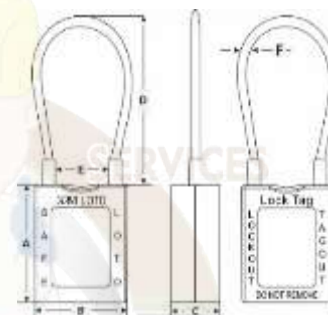
to meet
 OSHA'S Lockout Tagout Standard
 29 CFR, 1910.147&1910.269

www.lotoappliances.com



KRM LOTO - SAFETY PADLOCK WITH STEEL CABLE

- A Padlock is a detachable lock passed by an opening with U Shaped shackle used to protect against unauthorized or unwanted stealing. Provided with LATEST LOCKING MECHANISM used to lock the different devices.
- KRM LOTO SAFETY PADLOCK---- "Seamless" lock structure durability - key system: DIFFER KEY, ALIKE KEY, MASTER & DIFFER KEY. The new management key technology, - 10 level management.
- To meet OSHA standard for The Control of Hazardous Energy (Lockout/Tagout), Title 29 Code of Federal Regulations(CFR)Part 1910.147
- High quality with waterproof, corrosion resistant and strong adhesive..
- Key retaining ensures that padlock is not left unlocked.
- Configuration key card, easy to know personal ID indicating the corresponding padlock for easy management.
- KEY SYSTEM - **Alike Key, Master & Differ Key, Differ Key. – on request**
- **Body Material** - Glass fiber reinforced nylon / (Composition of ABS + Nylon).
- **Shackle Material** – Steel Finish Cable.
- **Color** - Red, Blue, Green, Yellow, Orange, White, Brown, Black, Purple.
- Work temperature 0o - 250o F (-20o - 120o C)
- **Weight** – 100gm



BODY HEIGHT (A)	BODY WIDTH(B)	BODY DEPTH (C)	CABLE SHACKLE LENGTH IN LOCK POSITION (D)	SHACKLE WIDTH (E)	CABLE SHACKLE THICKNESS (F)
45 mm	40 mm	20 mm	150mm	20 mm	3 mm

KRM-K-CASPL-C



OEM Manufacturer & Global Supplier of
Lockout Tagout & Safety Products

to meet
OSHA'S Lockout Tagout Standard
29 CFR, 1910.147&1910.269



www.locktagindia.com



LOCKOUT/TAGOUT



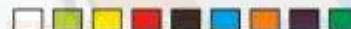
KRM-K-CASPL-C

SAFETY PADLOCK WITH STEEL CABLE

CE
Certified

A Padlock is a detachable lock passed by an opening with U Shaped shackle used to protect against unauthorized or unwanted stealing. Provided with **LATEST LOCKING MECHANISM** used to lock the different devices.

- KRM LOTO SAFETY PADLOCK— "Seamless" lock structure durability - key system: **DIFFER KEY, ALIKE KEY, MASTER & DIFFER KEY**. The new management key technology, - 10 level management.
- To meet OSHA standard for The Control of Hazardous Energy (Lockout/Tagout), Title **29 Code of Federal Regulations(CFR)Part 1910.147**
- High quality with waterproof, corrosion resistant and strong adhesive..
- Key retaining ensures that padlock is not left unlocked.
- Configuration key card, easy to know personal ID indicating the corresponding padlock for easy management.
- **KEY SYSTEM** - Alike Key, Master & Differ Key, Differ Key. – on request
- **Body Material** - Glass fiber reinforced nylon / (Composition of ABS + Nylon).
- **Shackle Material** – Steel Finish Cable.
- **Color** - Red, Blue, Green, Yellow, Orange, White, Brown, Black, Purple.
- Work temperature 0° - 250° F (-20° - 120° C)
- **Weight** – 125gm



BODY HEIGHT (A)	BODY WIDTH (B)	BODY DEPTH(C)	CABLE HEIGHT (D)	CABLE WIDTH (E)	CABLE THICKNESS (F)
45mm	40mm	20mm	150mm	20mm	3mm



OEM Manufacturer & Global Supplier of
 Lockout Tagout & Safety Products

to meet
 OSHA'S Lockout Tagout Standard
 29 CFR, 1910.147&1910.269

www.lotoappliances.com



Email: info@krmlo.com, info@krmcorporation.com, krmlo@gmail.com

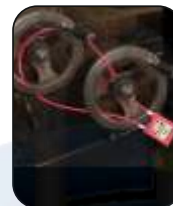
Regd. Office:1H/31-A, N.I.T, Faridabad-121001 (Haryana) Postal Office:615, Sector-15-A, Faridabad-121007-Haryana-NCR-INDIA

www.krmcorporation.com | www.lockouttagouts.com | www.krmlo.com | www.locktagindia.com | www.lotoappliances.com

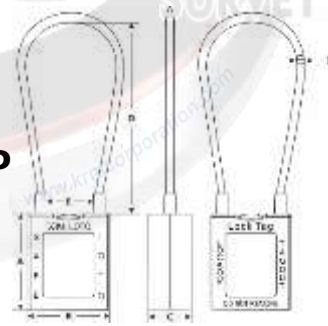


KRM LOTO - CABLE SAFETY PADLOCK INSULATED STEEL SHACKLE 600MM LENGTH

- A Padlock is a detachable lock passed by an opening with U Shaped shackle used to protect against unauthorized or unwanted stealing. Provided with LATEST LOCKING MECHANISM used to lock the different devices.
- KRM LOTO SAFETY PADLOCK---- "Seamless" lock structure durability - key system: DIFFER KEY, MASTER KEY. The new management key technology, - 10 level management.
- To meet OSHA standard for The Control of Hazardous Energy (Lockout/Tagout), Title 29 Code of Federal Regulations(CFR)Part 1910.147
- Key retaining ensures that padlock is not left unlocked.
- Configuration key card, easy to know personal ID indicating the corresponding padlock for easy management.
- KEY SYSTEM - Differ Key, Master Key
- **Body Material** - Glass fiber reinforced nylon / (Composition of ABS + Nylon).
- **Cable Shackle Material** – High quality corrosion resistant with insulated Steel cable.
- **Length of Cable** – 600mm in unlock position and 300mm in lock position
- **Color** - Red, Blue, Green, Yellow.
- **Weight** – 100gm



KRM-K-CASPL-P



BODY HEIGHT (A)	BODY WIDTH(B)	BODY DEPTH(C)	CABLE SHACKLE LENGTH IN LOCK POSITION (D)	SHACKLE WIDTH (E)	CABLE SHACKLE THICKNESS(F)
45 mm	40 mm	20 mm	300mm	20 mm	4.5mm



OEM Manufacturer & Global Supplier of
Lockout Tagout & Safety Products

to meet
OSHA'S Lockout Tagout Standard
29 CFR, 1910.147&1910.269



www.lotoappliances.com



Regd. Office: 1H/31-A, N.I.T, Faridabad-121001 (Haryana) Postal Office: 615, Sector-15-A, Faridabad-121007-Haryana-NCR-INDIA

www.krmcorporation.com | www.lockouttagouts.com | www.krmloto.com | www.locktagindia.com | www.lotoappliances.com

LOCKOUT/TAGOUT



CABLE SAFETY PADLOCK INSULATED STEEL SHACKLE 600MM LENGTH

CE Certified

A Padlock is a detachable lock passed by an opening with U Shaped shackle used to protect against unauthorized or unwanted stealing. Provided with **LATEST LOCKING MECHANISM** used to lock the different devices.

- KRM LOTO SAFETY PADLOCK--- "Seamless" lock structure durability - key system: **DIFFER KEY, MASTER KEY**. The new management key technology, - 10 level management.
- To meet OSHA standard for The Control of Hazardous Energy (Lockout/Tagout), Title 29 Code of Federal Regulations(CFR)Part 1910.147
- Key retaining ensures that padlock is not left unlocked.
- Configuration key card, easy to know personal ID indicating the corresponding padlock for easy management.
- **KEY SYSTEM** - Differ Key, Master Key
- **Body Material** - Glass fiber reinforced nylon / (Composition of ABS + Nylon).
- **Cable Shackle Material** - High quality corrosion resistant with insulated Steel cable.
- **Length of Cable** - 600mm in unlock position and 300mm in lock position
- **Color** - Red, Blue, Green, Yellow.
- **Weight** - 100gm



KRM-K-CASPL-P

BODY HEIGHT (A)	BODY WIDTH (B)	BODY DEPTH (C)	CABLE SHACKLE LENGTH IN LOCK POSITION (D)	SHACKLE WIDTH (E)	CABLE SHACKLE THICKNESS (F)
45mm	40mm	20mm	300mm	20mm	4.5mm

KRM CORPORATION

ISO 9001:2015, ISO EMS 14001:2015, ISO 45001:2018
to meet OSHA's Lockout Tagout Standard 29 CFR, 1910.147&1910.269

KM Safetech Private Limited

QUALITY MANAGEMENT SYSTEM ISO 9001:2015

M: 00 91 9810 291 381, 8800 544 881, T: 00 91 129 - 4021 381

info@krmcorporation.com, info@krmloto.com, krmloto@gmail.com, wadhwarajinder@gmail.com

Postal Add: 615, Sector-15A, Faridabad-121007 Haryana - NCR (INDIA)
Regd. Office: 1H/31A, N.I.T. Faridabad-121001

www.krmloto.com www.krmcorporation.com, www.safetyloto.com
www.lotoappliances.com, www.lockouttagouts.com

GSTIN No.: 06AACPW8746Q1Z6,
PAN No.: AACPW8746Q
TIN No.: 06821328889,
TAN no.: RTKKO3359G
IEC: 0509006116

M: 00 91 9810 291 381, 8900 544 881



OEM Manufacturer & Global Supplier of
Lockout Tagout & Safety Products

to meet
OSHA'S Lockout Tagout Standard
29 CFR, 1910.147&1910.269



www.lotoappliances.com



GSTIN No.: 06AAECK2831L1Z1
PAN No.: AAECK2831L
TIN No.: 06824000112
CIN No.: U31903HR2011PTC042508
IEC: AAECK2831L

Telefax: 00 91 129 4021 381, 413 1381 (D)

Regd. Office:1H/31-A, N.I.T, Faridabad-121001 (Haryana) Postal Office:615, Sector-15-A, Faridabad-121007-Haryana-NCR-INDIA

www.krmcorporation.com | www.lockouttagouts.com | www.krmloto.com | www.locktagindia.com | www.lotoappliances.com

SPECIAL FEATURE of OSHA Safety Lock Tag Padlock :

- High quality isolation padlock as per isolation guidelines to meet OSHA requirements
- Key retained in unlock condition that means key would not come out & the Key can be removed in only lock position.
- It is suitable for both low and high temperature.
- Particular key for particular padlock.
- No key mixing with any other lock.
- Key mechanism- differ key , alike key , master key available on demand. The new management key technology – 6/10 level management.
- Each lock with specific numbering on body of lock and key.
- Shackle – 25/38/76mm
- Standard shackle, long shackle in Metal/Dielectric shackle available
- Electric current resist from shackle to key, in case of dielectric shackle .
- Main advantage of nylon shackle , in case of emergency, shackle can be cut easily.



OEM Manufacturer & Global Supplier of
Lockout Tagout & Safety Products

to meet
OSHA'S Lockout Tagout Standard
29 CFR, 1910.147&1910.269



www.lotoappliances.com



Regd. Office:1H/31-A, N.I.T, Faridabad-121001 (Haryana) | Postal Office:615, Sector-15-A, Faridabad-121007-Haryana-NCR-INDIA
www.krmcorporation.com | www.lockouttagouts.com | www.krmloto.com | www.locktagindia.com | www.lotoappliances.com

KRM LOTO
EXPERT

CE
Certified

SPECIAL FEATURE OF OSHA SAFETY LOCK TAG PADLOCKS

- High quality isolation padlock as per isolation guidelines to meet OSHA requirements
- Key retained in unlock condition that means key would not come out & the Key can be removed in only lock position.
- It is suitable for both low and high temperature.
- Particular key for particular padlock.
- No key mixing with any other lock.
- Key mechanism- differ key , alike key , master key available on demand. The new management key technology – 6/10 level management.
- Each lock with specific numbering on body of lock and key.
- Shackle – 25/38/76mm
- Standard shackle, long shackle in Metal/Dielectric shackle available
- Electric current resist from shackle to key, in case of dielectric shackle .
- Main advantage of nylon shackle , in case of emergency, shackle can be cut easily.



KRM CORPORATION
ISO QMS - 9001:2015, ISO EMS 14001:2015, ISO OHSMS 45001:2018
to meet OSHA's Lockout Tagout Standard 29 CFR, 1910.147 & 1910.269

KRM Safetech Private Limited
QUALITY MANAGEMENT SYSTEM ISO QMS 9001:2015
info@krmcorporation.com, info@krmloto.com, krmloto@gmail.com, wadhwarajinder@gmail.com

M: 00 91 9810 291 381, 8800 544 881, T: 00 91 129 - 4021 381

Postal Add: 615, Sector-15A, Faridabad-121007
Regd. Office: 1H/31A, N.I.T. Faridabad-121001 Haryana - NCR (INDIA)

www.krmloto.com | www.krmcorporation.com, www.safetyloto.com
www.lotoappliances.com, www.lockouttagouts.com

GSTIN No.: 06AAVPW8746Q1Z6,
PAN No.: AAVPW8746Q
TIN No.: 06821328889,
TAN no.: RTKKO3359G
IEC: 0509006116

M: 00 91 9810 291 381, 8900 544 881



OEM Manufacturer & Global Supplier of
Lockout Tagout & Safety Products

to meet
OSHA'S Lockout Tagout Standard
29 CFR, 1910.147&1910.269



www.lotoappliances.com



GSTIN No.: 06AAECK2831L1Z1
PAN No.: AAECK2831L
TIN No.: 06824000112
CIN No.: U31903HR2011PTC042508
IEC: AAECK2831L

Telefax: 00 91 129 4021 381, 413 1381 (D)

Regd. Office:1H/31-A, N.I.T, Faridabad-121001 (Haryana) Postal Office:615, Sector-15-A, Faridabad-121007-Haryana-NCR-INDIA

www.krmcorporation.com | www.lockouttagouts.com | www.krmloto.com | www.locktagindia.com | www.lotoappliances.com

DRAWBACK OF ABS JACKETED METAL PADLOCK:

- KEY NOT RETAINED in this Lock—not recommended to any one for full proof isolation work for safety .
- Possibility for key interchanging is also on higher side.
- That lock was metal body and cover with ABS clipping with spring/ ball cylinder which not hold key in unlock Position.
- Non resistance to electric current, so not recommendable for the high voltage area.
- No specific key arrangement for locking mechanism.

WE ALWAYS RECOMMEND OSHA SAFETY LOCK TAG PADLOCK INSPITE OF ABS JACKETED PADLOCK



OEM Manufacturer & Global Supplier of
Lockout Tagout & Safety Products

to meet
OSHA'S Lockout Tagout Standard
29 CFR, 1910.147&1910.269



www.lotoappliances.com



GSTIN No.: 06AAECK2831L1Z1
PAN No.: AAECK2831L
TIN No.: 06824000112
CIN No.: U31903HR2011PTC042508
IEC: AAECK2831L

Telefax: 00 91 129 4021 381, 413 1381 (D)

Regd. Office:1H/31-A, N.I.T, Faridabad-121001 (Haryana) Postal Office:615, Sector-15-A, Faridabad-121007-Haryana-NCR-INDIA

www.krmcorporation.com | www.lockouttagouts.com | www.krmloto.com | www.locktagindia.com | www.lotoappliances.com



For more details
login our website.

For more details on LOTO and Safety Products visit our website – www.krmcorporation.com

GSTIN No.: 06AAVPW8746Q1Z6,
PAN No.: AAVPW8746Q
TIN No.: 06821328889,
TAN no.: RTKKO3359G
IEC: 0509006116

M: 00 91 9810 291 381, 8900 544 881



OEM Manufacturer & Global Supplier of
Lockout Tagout & Safety Products

to meet
OSHA'S Lockout Tagout Standard
29 CFR, 1910.147&1910.269



www.lotoappliances.com



GSTIN No.: 06AAECK2831L1Z1
PAN No.: AAECK2831L
TIN No.: 06824000112
CIN No.: U31903HR2011PTC042508
IEC: AAECK2831L

Telefax: 00 91 129 4021 381, 413 1381 (D)

Regd. Office: 1H/31-A, N.I.T, Faridabad-121001 (Haryana) Postal Office: 615, Sector-15-A, Faridabad-121007-Haryana-NCR-INDIA

www.krmcorporation.com | www.lockouttagouts.com | www.krmloto.com | www.locktagindia.com | www.lotoappliances.com

Notes:

- Lock & Tag should be used with all loto products.
- For group locking on particular energy hasp should be used.
- Group lockout box should be used for group lockout tagout.
- Scissor Cable or Round cable lockout can be used to lock multiple hazardous energies instead putting individual locks & tags.