

KRM Corporation LOTO & Safety Products
 An ISO 9001:2008 Certified company CE Certified

Lockout & Tagout Barrier System Signs & Posters Tapes Road Safety Parking Security PPE Doorseals & Windowseals

Postal Address: 615, Sec-15a, Faridabad- Haryana-NCR- India, Zip Code: 121007 Contact mail: lockout@krmcorporation.com

KRM MULTIPURPOSE DISPLAY SIGNS



KRM CORPORATION Contact No.: 00 91 9810 291 381, 8800 544 881 Ph: 0091 129 - 4021 381
 Email: lockout@krmcorporation.com, wadhwrajinder@gmail.com, website: www.krmcorporation.com, www.lockout.in

KRM Corporation LOTO & Safety Products
 An ISO 9001:2008 Certified company CE Certified

Lockout & Tagout Barrier System Signs & Posters Tapes Road Safety Parking Security PPE Doorseals & Windowseals

Postal Address: 615, Sec-15A, Faridabad- Haryana-NCR- India, Zip Code: 121007

DESIGN OPTION 1

Display with special hinged
 frame & signature
 impression and easy flex
 stretching mechanism

Application Type – Indoor +
 Outdoor

Option 1: with LEDs

Option 2: with fluorescent
 tubes



KRM Corporation LOTO & Safety Products
 An ISO 9001:2008 Certified company CE Certified

Lockout & Tagout Barrier System Signs & Posters Tapes Road Safety Parking Security PPE Doorseals & Windowseals

Postal Address: 615, Sec-15A, Faridabad- Haryana-NCR- India, Zip Code: 121007

**Large Format Backlit,
 New Delhi Airport
 T---3**



KRM CORPORATION Contact No.: 00 91 9810 291 381, 8800 544 881 Ph: 0091 129 - 4021 381
 Email: lockout@krmcorporation.com, wadhwrajinder@gmail.com, website: www.krmcorporation.com, www.lockout.in



SpecificaAons

The front face aluminium profile (75/100/150) fitted with high grade PMMA to house flex stretching mechanism to enable flex stretching with maximum ease and quick flex change.(without use of any sub frame)

ACP sheet, 4mm, for back cover with suitable aluminium framing.

Signature line (in approved colour) – LED Lighted

Mounting : wall mount, beam mount, pedestal mount, pillar mount SS / MS and suspended.

Usage : Indoor model / outdoor model.

Media: Flex

Lighting : T8 / T5 / LED

Max size: 60?? x 15??

Depth of Box : Fluorescent Tubes - 7??

LED -5??



General SpecificaAons

The flex signage box structure to be made out of alloy aluminium profiles powder coated to approved colours with 10 years warranty.

- The signage box houses all electrical using T-8 fluorescent tubes and electronic ballast of Phillips make mounted on rear sheet. All the electrical wiring done using FRLS cables.
- ACP sheet of appropriate thickness for back cover with suitable aluminium framing.
- All electrical fixtures and connectors to international standards.
- Neat wiring arrangements.
- Screw less/Boltless exteriors.
- The hinges for door operation should be inbuilt into the profile.
- The rubber gasketing should be concealed into the Aluminium profile sections.

- Sleek and intelligent locking system with special key arrangement.
- Sealed/ welded exterior sides to prevent water entry from sides.
- Robust and seamless design to withstand outdoor conditions of strong wind and rains.
- The signage shall be uniformly illuminated with no hot spots.
- The signage box should be free from light leakages.
- All electrical fixtures and connectors to international standards.
- The sign box to have suitable design so as to avoid penetration of water, dust and insects.
- The box should have clear fascia with no screws visible from outside.
- All the Aluminium profile sections shall be powder coated to 70 microns with 10 year warranty.
- All the MS sections should have galvanization conforming to IS4759 / colored powder coating as approved by the Employer.
- Suitable fasteners recommended by HILTI or Fischer should be used for the purpose.



DESIGN OPTION 2

Display with hinged frame
(cartridge system / special
stretching
system)

Application Type – Indoor +
Outdoor

Option 1: with LEDs

Option 2: with fluorescent
tubes



KRM Corporation LOTO & Safety Products
 An ISO 9001:2008 Certified company CE Certified

Lockout & Tagout Barrier System Signs & Posters Tapes Road Safety Parking Security PPE Doorseals & Windowseals

Postal Address: 615, Sec-15A, Faridabad- Haryana-NCR- India, Zip Code: 121007

**Large Format Backlit,
Mumbai Airport**



KRM CORPORATION Contact No.: 00 91 9810 291 381, 8800 544 881 Ph: 0091 129 - 4021 381
 Email: lockout@krmcorporation.com, wadhwrajinder@gmail.com, website: www.krmcorporation.com, www.lockout.in



Specifications

The front face aluminium profile (75mm) to house the flex stretching mechanism with MS frame – cartridge mechanism.

ACP sheet, 3mm, for back cover with suitable aluminium framing.

Mounting : wall mount, beam mount, pedestal mount, pillar mount SS / MS and suspended.

Usage : Indoor model / outdoor model.

Media: Flex

Lighting : T8 / T5 / LED

Max size: 20" x 10" – cartridge system

50" x 10" – Special stretching system

Depth of Box : Fluorescent Tubes – 7"

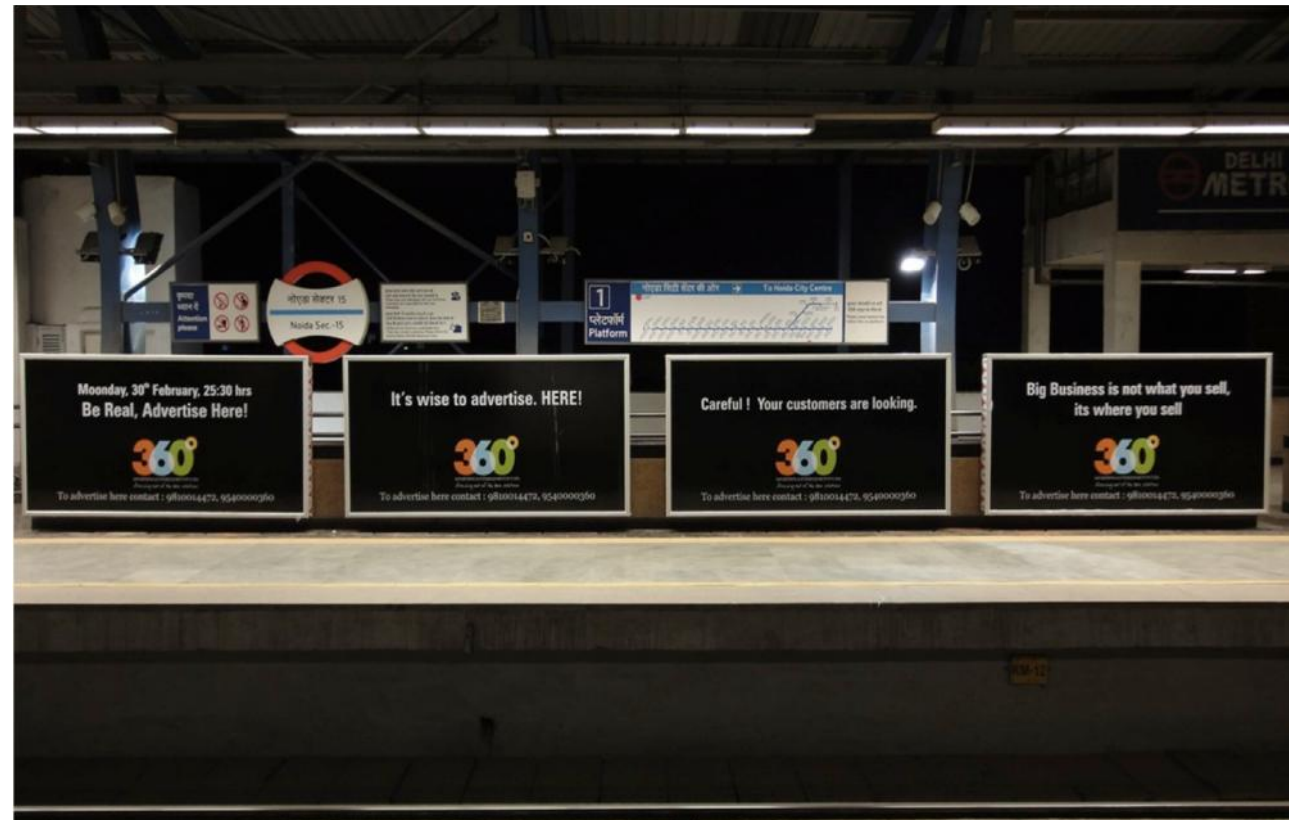
LED -5"

KRM Corporation LOTO & Safety Products
 An ISO 9001:2008 Certified company CE Certified

Lockout & Tagout Barrier System Signs & Posters Tapes Road Safety Parking Security PPE Doorseals & Windowseals

Postal Address: 615, Sec-15A, Faridabad- Haryana-NCR- India, Zip Code: 121007

DESIGN OPTION 3
Display with Clip on mechanism
Application Type –
 Indoor
 Option 1: with LEDs
 Option 2: with fluorescent tubes



KRM CORPORATION Contact No.: 00 91 9810 291 381, 8800 544 881 Ph: 0091 129 - 4021 381
 Email: lockout@krmcorporation.com, wadhwrajinder@gmail.com, website: www.krmcorporation.com, www.lockout.in



SpecificaAons

The front face aluminium clip on profile(50mm) with MS sub frame concealed to tighten the flex media Bakelite, 2mm , for back cover with suitable aluminium framing.

All sides cladded with 2mm ACP sheets.

Mounting : wall mount, beam mount, pedestal mount, pillar mount SS / MS and suspended.

Usage : Indoor model

Media: Flex

Lighting : T8 / T5 / LED

Max size: 20?? x 10??

Depth of Box : Fluorescent Tubes – 7”

LED -5??

KRM Corporation LOTO & Safety Products
 An ISO 9001:2008 Certified company CE Certified

Lockout & Tagout Barrier System Signs & Posters Tapes Road Safety Parking Security PPE Doorseals & Windowseals

Postal Address: 615, Sec-15A, Faridabad- Haryana-NCR- India, Zip Code: 121007

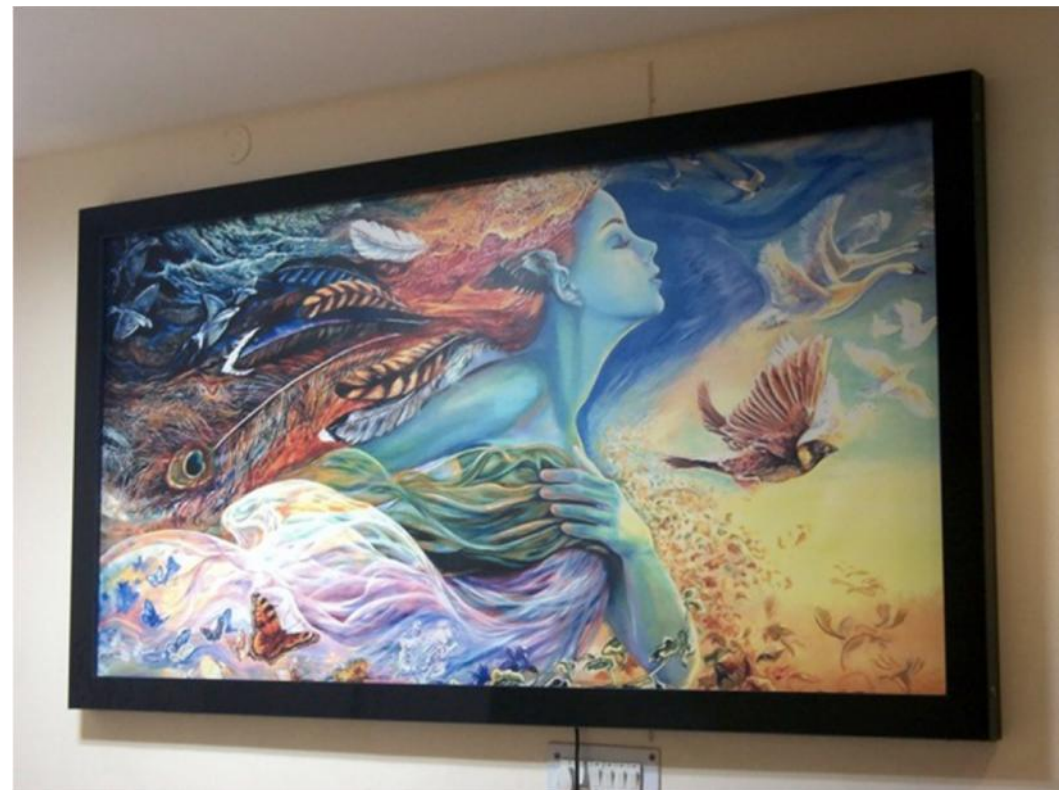
DESIGN OPTION 4

Translite / Flex Signage Box (slim)

Application Type – Indoor

Option 1: with LEDs

Option 2: with fluorescent tubes





SpecificaAons

The front face aluminium profile (75/100/150) fitted with high grade PMMA to house flex stretching mechanism to enable flex stretching with maximum ease and quick flex change.(without use of any sub frame)

ACP sheet, 3mm, for back cover with suitable aluminium framing.

Mounting : wall mount, beam mount, pedestal mount, pillar mount SS / MS and suspended.

Usage : Indoor model .

Media: Flex Translite, Yupo

Lighting : T5 / LED

Max size: 8" x 4", 6" X 4", 6" x 3", 5" X 3", 7" X 3.5"

Depth of Box : -3"

KRM Corporation LOTO & Safety Products
An ISO 9001:2008 Certified company CE Certified

Lockout & Tagout Barrier System Signs & Posters Tapes Road Safety Parking Security PPE Doorseals & Windowseals

Postal Address: 615, Sec-15A, Faridabad- Haryana-NCR- India, Zip Code: 121007

Category Free Standing

KRM CORPORATION Contact No.: 00 91 9810 291 381, 8800 544 881 Ph: 0091 129 - 4021 381
Email: lockout@krmcorporation.com, wadhwrajinder@gmail.com, website: www.krmcorporation.com, www.lockout.in

KRM Corporation LOTO & Safety Products
 An ISO 9001:2008 Certified company CE Certified

Lockout & Tagout Barrier System Signs & Posters Tapes Road Safety Parking Security PPE Doorseals & Windowseals

Postal Address: 615, Sec-15A, Faridabad- Haryana-NCR- India, Zip Code: 121007

DESIGN OPTION 2

Sub Frame Signage Box with Clip- on mechanism and branding

Application Type – Indoor

Option 1: with LEDs

Option 2: with fluorescent tubes





Clip on aluminium profile at the front face 50 mm wide
to conceal an MS sub frame to tighten the flex media.

2mm Bakelite panel for back cover with suitable aluminium framing.

All sides clad with 2 mm ACP sheet.

- **Mounting:** Pillar (SS / MS), wall mount, beam mount, pedestal mount, suspended.
- **Usage:** indoor model.
- **Media:** Flex
- **Lighting:** T8 / T5 / LED
- **Max size:** 20" x 10", 16" X 8", 12" x 6", 10" x 5"
- **Depth:** Fluorescent Tubes – 7"
LED – 5"



KRM Corporation LOTO & Safety Products
 An ISO 9001:2008 Certified company CE Certified

Lockout & Tagout Barrier System Signs & Posters Tapes Road Safety Parking Security PPE Doorseals & Windowseals

Postal Address: 615, Sec-15A, Faridabad- Haryana-NCR- India, Zip Code: 121007

DESIGN OPTION 3

Ultra Slim Display

Application Type – Indoor

Option 1: with LEDs

Option 2: with fluorescent tubes



KRM CORPORATION Contact No.: 00 91 9810 291 381, 8800 544 881 Ph: 0091 129 - 4021 381
 Email: lockout@krmcorporation.com, wadhwrajinder@gmail.com, website: www.krmcorporation.com, www.lockout.in



The front face aluminium profile 75mm wide to house the flex stretching mechanism with MS frame(Cartridge System).
3mm ACP sheet for back cover with suitable aluminium framing.

Mounting: Pedestal mount, pillar mount (SS / MS).

Usage: indoor model

Media: Flex, Translite, Yupo

Lighting: T5 - Edge lit

LED – Backlit

Max size: 8" x 4"

6 " x 4 "

Depth: - 3 "

KRM Corporation LOTO & Safety Products
 An ISO 9001:2008 Certified company CE Certified

Lockout & Tagout Barrier System Signs & Posters Tapes Road Safety Parking Security PPE Doorseals & Windowseals

Postal Address: 615, Sec-15A, Faridabad- Haryana-NCR- India, Zip Code: 121007

DESIGN OPTION 4

Glass Front, Side Opening with illuminated sides

Application Type – Indoor + Outdoor – single sided / double sided

Option 1: with LEDs

Option 2: with fluorescent tubes



KRM CORPORATION Contact No.: 00 91 9810 291 381, 8800 544 881 Ph: 0091 129 - 4021 381
 Email: lockout@krmcorporation.com, wadhwrajinder@gmail.com, website: www.krmcorporation.com, www.lockout.in

KRM Corporation LOTO & Safety Products
 An ISO 9001:2008 Certified company CE Certified

Lockout & Tagout Barrier System Signs & Posters Tapes Road Safety Parking Security PPE Doorseals & Windowseals

Postal Address: 615, Sec-15A, Faridabad- Haryana-NCR- India, Zip Code: 121007

**Backlit Standee,
 New Delhi T---3**



KRM CORPORATION Contact No.: 00 91 9810 291 381, 8800 544 881 Ph: 0091 129 - 4021 381
 Email: lockout@krmcorporation.com, wadhwrajinder@gmail.com, website: www.krmcorporation.com, www.lockout.in



Media- translite, Vinyl (cut/Printed) pasted

Lower panel: lit or nonlit for branding.

Usage : Indoor + Outdoor

Type : single sided / double sided

Side opening doors with 5mm thick toughened glass
front

Depth: single sided – 5’
double sided - 6.5’

Mounting : Free standing / grouted from inside

sizes: 7’ X 3’, 6’ X 3’, 6’ X 2.5’, 5’ X 2.5

KRM Corporation LOTO & Safety Products
An ISO 9001:2008 Certified company CE Certified

Lockout & Tagout Barrier System Signs & Posters Tapes Road Safety Parking Security PPE Doorseals & Windowseals

Postal Address: 615, Sec-15A, Faridabad- Haryana-NCR- India, Zip Code: 121007



Category – Digital Display

KRM Corporation LOTO & Safety Products
 An ISO 9001:2008 Certified company CE Certified

Lockout & Tagout Barrier System Signs & Posters Tapes Road Safety Parking Security PPE Doorseals & Windowseals

Postal Address: 615, Sec-15A, Faridabad- Haryana-NCR- India, Zip Code: 121007

Digital Sign with signature line
Application Type – Indoor + Outdoor



KRM Corporation LOTO & Safety Products
 An ISO 9001:2008 Certified company CE Certified

Lockout & Tagout Barrier System Signs & Posters Tapes Road Safety Parking Security PPE Doorseals & Windowseals

Postal Address: 615, Sec-15A, Faridabad- Haryana-NCR- India, Zip Code: 121007

Delhi
 T---3
 Digital
 AdverAsing

 Synchronized



KRM CORPORATION Contact No.: 00 91 9810 291 381, 8800 544 881 Ph: 0091 129 - 4021 381
 Email: lockout@krmcorporation.com, wadhwrajinder@gmail.com, website: www.krmcorporation.com, www.lockout.in

KRM Corporation LOTO & Safety Products
 An ISO 9001:2008 Certified company CE Certified

Lockout & Tagout Barrier System Signs & Posters Tapes Road Safety Parking Security PPE Doorseals & Windowseals

Postal Address: 615, Sec-15A, Faridabad- Haryana-NCR- India, Zip Code: 121007

Delhi
 T---3
 Digital
 AdverAsing

 Synchronized



KRM CORPORATION Contact No.: 00 91 9810 291 381, 8800 544 881 Ph: 0091 129 - 4021 381
 Email: lockout@krmcorporation.com, wadhwrajinder@gmail.com, website: www.krmcorporation.com, www.lockout.in



Specifications

An integrated arrangement of Aluminium profile sections with MS structural members . All the MS structural members to be hot dip galvanized/Powder

Coated, as per relevant BIS specifications.

- Top openable doors on single / double sides for easy maintenance and serviceability.
- Built in hinges for door operation.
- 2 nos. gas lifters for each door
- Fixed 6mm thk.Toughened glass with ceramic printed border **(OR)** Removable Toughened Glass with Aluminium profile border.

- Concealed wiring in wiring races built into the Aluminium profile sections . All wires of suitable sizes FRLS grade and Havels/Finolex make.
- Suitable design to avoid penetration of water, dust and insects.
- Cooling systems for heat dissipation.
- **Screen-** Samsung / LG.
- **Media player** – Samsung or equivalent.
- **Sizes:** - As required.
- **Usage** : -Indoor / outdoor



Specifications

- Sleek and Elegant Design
- 32" LCD with IR Touch Technology
- Multi-touch supports finger gestures
- 20 minute Power Backup
- Free Standing Unit – 4" Footprint
- Customized Designs with Branding Options



KRM Corporation LOTO & Safety Products
An ISO 9001:2008 Certified company CE Certified

Lockout & Tagout Barrier System Signs & Posters Tapes Road Safety Parking Security PPE Doorseals & Windowseals

Postal Address: 615, Sec-15A, Faridabad- Haryana-NCR- India, Zip Code: 121007

Category – Tall Display for large halls

KRM Corporation LOTO & Safety Products
 An ISO 9001:2008 Certified company CE Certified

Lockout & Tagout Barrier System Signs & Posters Tapes Road Safety Parking Security PPE Doorseals & Windowseals

Postal Address: 615, Sec-15A, Faridabad- Haryana-NCR- India, Zip Code: 121007

Tall Display for Atrium

Application Type – Indoor – double sided

Option 1: with LEDs

Option 2: with fluorescent tubes





An integrated arrangement of Aluminium profile sections

with MS structural members for strengthening to be approved by the client.

All the MS structural members shall be hot dip galvanized, as per relevant BIS specifications.

The stretching mechanism is on a cartridge frame with Polycarbonate sheet and flex over it.

All tubes (T8

Media-Flex

Branding panel, lit or nonlit at bottom.

Front/ back opening with lockable flappers on the edges and top.

Maximum size: 22'X 8'

Usage : Indoor

Type : Doubled sided

KRM Corporation LOTO & Safety Products
An ISO 9001:2008 Certified company CE Certified

Lockout & Tagout Barrier System Signs & Posters Tapes Road Safety Parking Security PPE Doorseals & Windowseals

Postal Address: 615, Sec-15A, Faridabad- Haryana-NCR- India, Zip Code: 121007

Category – Scrollers

KRM Corporation LOTO & Safety Products
An ISO 9001:2008 Certified company CE Certified

Lockout & Tagout Barrier System Signs & Posters Tapes Road Safety Parking Security PPE Doorseals & Windowseals

Postal Address: 615, Sec-15A, Faridabad- Haryana-NCR- India, Zip Code: 121007

Free Standing Scrollers

KRM CORPORATION Contact No.: 00 91 9810 291 381, 8800 544 881 Ph: 0091 129 - 4021 381
Email: lockout@krmcorporation.com, wadhwarajinder@gmail.com, website: www.krmcorporation.com, www.lockout.in

KRM Corporation LOTO & Safety Products
 An ISO 9001:2008 Certified company CE Certified

Lockout & Tagout Barrier System Signs & Posters Tapes Road Safety Parking Security PPE Doorseals & Windowseals

Postal Address: 615, Sec-15A, Faridabad- Haryana-NCR- India, Zip Code: 121007

DESIGN OPTION 1
Application Type – Indoor + Outdoor



KRM Corporation LOTO & Safety Products
 An ISO 9001:2008 Certified company CE Certified

Lockout & Tagout Barrier System Signs & Posters Tapes Road Safety Parking Security PPE Doorseals & Windowseals

Postal Address: 615, Sec-15A, Faridabad- Haryana-NCR- India, Zip Code: 121007

DESIGN OPTION 2

Free Standing Scrollers with sleek legs
 Application Type – Indoor + Outdoor



KRM Corporation LOTO & Safety Products
 An ISO 9001:2008 Certified company CE Certified

Lockout & Tagout Barrier System Signs & Posters Tapes Road Safety Parking Security PPE Doorseals & Windowseals

Postal Address: 615, Sec-15A, Faridabad- Haryana-NCR- India, Zip Code: 121007

DESIGN OPTION 3
Free Standing Box Type Scrollers
Application Type – Indoor + Outdoor



KRM Corporation LOTO & Safety Products
An ISO 9001:2008 Certified company CE Certified

Lockout & Tagout Barrier System Signs & Posters Tapes Road Safety Parking Security PPE Doorseals & Windowseals

Postal Address: 615, Sec-15A, Faridabad- Haryana-NCR- India, Zip Code: 121007

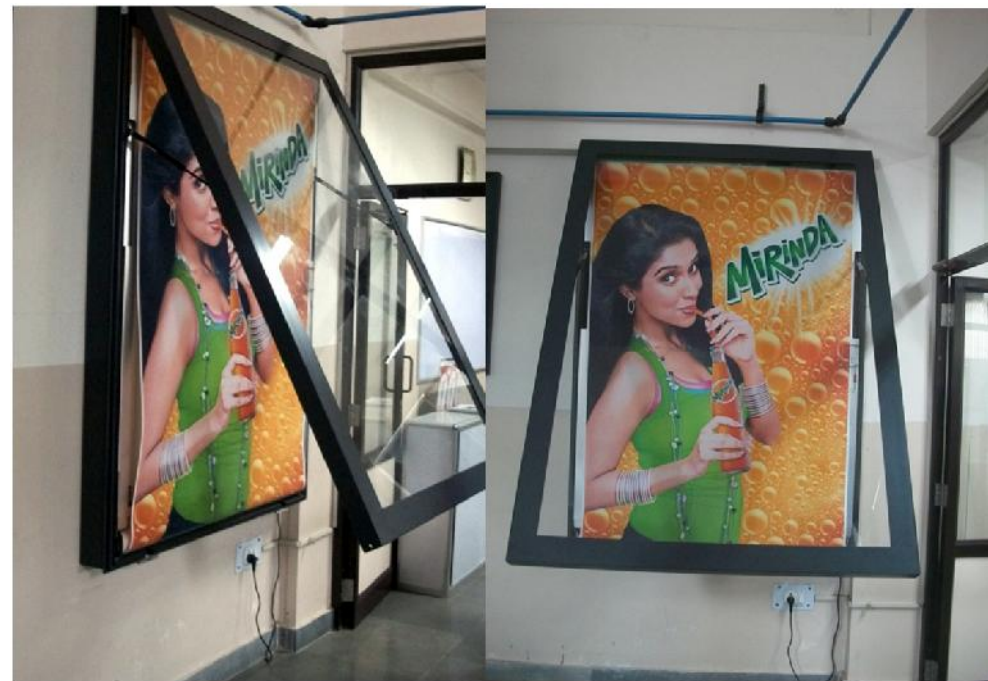
Other Scrollers

KRM Corporation LOTO & Safety Products
 An ISO 9001:2008 Certified company CE Certified

Lockout & Tagout Barrier System Signs & Posters Tapes Road Safety Parking Security PPE Doorseals & Windowseals

Postal Address: 615, Sec-15A, Faridabad- Haryana-NCR- India, Zip Code: 121007

Wall Mounted Scroller
Application Type – Indoor +
Outdoor



KRM CORPORATION Contact No.: 00 91 9810 291 381, 8800 544 881 Ph: 0091 129 - 4021 381
 Email: lockout@krmcorporation.com, wadhwrajinder@gmail.com, website: www.krmcorporation.com, www.lockout.in

KRM Corporation LOTO & Safety Products
 An ISO 9001:2008 Certified company CE Certified

Lockout & Tagout Barrier System Signs & Posters Tapes Road Safety Parking Security PPE Doorseals & Windowseals

Postal Address: 615, Sec-15A, Faridabad- Haryana-NCR- India, Zip Code: 121007

Billboard Scrollers
Application Type – Outdoor



KRM CORPORATION Contact No.: 00 91 9810 291 381, 8800 544 881 Ph: 0091 129 - 4021 381
 Email: lockout@krmcorporation.com, wadhwarajinder@gmail.com, website: www.krmcorporation.com, www.lockout.in



Specifications of scrollers

An integrated arrangement of Aluminium profile sections with MS structural members for strengthening . All the MS structural members to be hot dip galvanized/Powder Coated, as per relevant BIS specifications.

- Openable doors for easy maintenance and serviceability.
- The hinges for door operation inbuilt into the profile.
- 2 nos. gas lifters for each door for easy operation.
- All tubes (T8), ballasts of Philips or equivalent make so as to acquire uniform illumination.
- The exposed aluminum surface to be powder- coated to the desired RAL shade(70microns) as approved by the employer.
- Fixed 6mm thk. Toughened glass to be used with ceramic printed border or removable Toughened Glass with Aluminium profile border.

- The messages to be in Yupo/Translite.
- The rubber gasketing should be concealed into the Aluminium profile sections.
- The sign box to have suitable design so as to avoid penetration of water, dust and insects.
- Built in robust locking arrangement with tamper proof key to be provided on the door shutters.
- Gutters for draining rain water should be built into the Aluminium Profile section on its exteriors.(for Billboard type)
- C frame border made of joint less Aluminium profile, power coated or optionally SS 304 joint less SHS.
- The sign should be uniformly illuminated with no hot spots.

Specifica

KRM Corporation LOTO & Safety Products
 An ISO 9001:2008 Certified company CE Certified

Lockout & Tagout Barrier System Signs & Posters Tapes Road Safety Parking Security PPE Doorseals & Windowseals

Postal Address: 615, Sec-15A, Faridabad- Haryana-NCR- India, Zip Code: 121007

Billboard Display with special hinged frame & signature impression and easy flex stretching mechanism
Application Type - Outdoor



KRM CORPORATION Contact No.: 00 91 9810 291 381, 8800 544 881 Ph: 0091 129 - 4021 381
 Email: lockout@krmcorporation.com, wadhwarajinder@gmail.com, website: www.krmcorporation.com, www.lockout.in



Specification

The front face aluminium profile (75/100/150) fitted with high grade PMMA to house flex stretching mechanism to enable flex stretching with maximum ease and quick flex change.

(without use of any sub frame)

ACP sheet, 4mm, for back cover with suitable aluminium framing.

Signature line (in approved colour) – LED Lighted

Mounting :Pedestal mount with special cladded substructure behind the signage.

Usage : Outdoor model

Lighting : T8 / T5 / LED

Max size: 20'x10'

Depth: Fluorescent Tubes – 7'

LED – 5'

Media : Flex

KRM Corporation LOTO & Safety Products
 An ISO 9001:2008 Certified company CE Certified

Lockout & Tagout Barrier System Signs & Posters Tapes Road Safety Parking Security PPE Doorseals & Windowseals

Postal Address: 615, Sec-15A, Faridabad- Haryana-NCR- India, Zip Code: 121007



KRM CORPORATION Contact No.: 00 91 9810 291 381, 8800 544 881 Ph: 0091 129 - 4021 381
 Email: lockout@krmcorporation.com, wadhwrajinder@gmail.com, website: www.krmcorporation.com, www.lockout.in