



OEM Manufacturer & Global Supplier of
Lockout Tagout & Safety Products

to meet
OSHA'S Lockout Tagout Standard
29 CFR, 1910.147&1910.269

www.lockouttagouts.com

Email: info@krmloto.com, info@krmcorporation.com, krmloto@gmail.com

Regd. Office:1H/31-A, N.I.T, Faridabad-121001 (Haryana) Postal Office:615, Sector-15-A, Faridabad-121007-Haryana-NCR-INDIA

www.krmcorporation.com

www.lockouttagouts.com

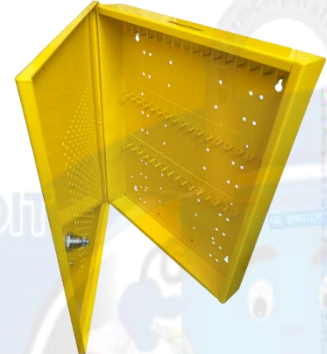
www.krmloto.com

www.locktagindia.com

www.lotoappliances.com

KRM LOTO – LOCKOUT TAGOUT STATION

LOCKOUT/TAGOUT



OEM Manufacturer & Global Supplier of
Lockout Tagout & Safety Productsto meet
OSHA'S Lockout Tagout Standard
29 CFR, 1910.147&1910.269

www.lotoappliances.com

Email: info@krmlogo.com, info@krmcorporation.com, krmlogo@gmail.com

Regd. Office:1H/31-A, N.I.T, Faridabad-121001 (Haryana) Postal Office:615, Sector-15-A, Faridabad-121007-Haryana-NCR-INDIA

www.krmcorporation.com | www.lockouttagouts.com | www.krmlogo.com | www.locktagindia.com | www.lotoappliances.com

**KRM LOTO – LOCKOUT TAGOUT STATION - INDEX****Index Page No:-3**

SR.NO	KRM LOTO PART CODE	PRODUCT NAME	WEIGHT (kg)	TECHNICAL PAGE NO.
1	KKRM-K-PLTS-2S1J2P	KRM LOTO – PORTABLE LOCKOUT TAGOUT STATION TINY HOLE-18152	4.5	4
2	KKRM-K-PLTS-6BL1J2P	KRM LOTO – PORTABLE LOCKOUT TAGOUT STATION-TINY HOLE BL-18152	4.5	5
3	KKRM-K-LLTPS-37590	KRM LOTO – LOCKABLE LOCKOUT TAGOUT PADLOCK STATION- TINY HOLE 37590	4.5	6
4	KKRM-K-OLLTS-J2P-37590	KRM LOTO – LOCKABLE LOCKOUT TAGOUT PADLOCK STATION- TINY HOLE 37590	4.6	7
5	KKRM-K-PCLS-S-Y	KRM LOTO-LOCKOUT TAGOUT STATION TINY HOLE -16146	6.5	8
6	KKRM-K-PCLS-S-R	KRM LOTO-LOCKOUT TAGOUT STATION TINY HOLE -16146	6.5	8
7	KKRM-K-Y-PCLS-P	KRM LOTO – LOCKOUT TAGOUT STATION-Opaque fascia-16146	7	9
8	KKRM-K-LCGS-Y	KRM LOTO – LOCKOUT TAGOUT STATION TINY HOLE with group loto box	7.5	10
9	KKRM-K-LLTS-30156	KRM LOTO – LOCKABLE LOCKOUT TAGOUT STATION-TINY HOLE-30156	10	11
10	KKRM-K-LLTS-MF-30156	KRM LOTO – LOCKABLE LOCKOUT TAGOUT STATION-MESH FASCIA -30156	12	12
11	KKRM-K-LLTS-SCF-30156	KRM LOTO – LOCKABLE LOCKOUT TAGOUT STATION-SLEEK CLEAR FASCIA -30156	10	13



OEM Manufacturer & Global Supplier of
 Lockout Tagout & Safety Products

to meet
 OSHA'S Lockout Tagout Standard
 29 CFR, 1910.147&1910.269



www.locktagindia.com

Email: info@krmlo.com, info@krmcorporation.com, krmlo@gmail.com

Regd. Office:1H/31-A, N.I.T, Faridabad-121001 (Haryana) Postal Office:615, Sector-15-A, Faridabad-121007-Haryana-NCR-INDIA



KRM LOTO – LOCKOUT TAGOUT STATION - INDEX

Index Page No:-4

12	KKRM-K-LLTS-30159	KRM LOTO – LOCKABLE LOCKOUT TAGOUT STATION-TINY HOLE -30159	12	14
13	KKRM-K-LLTS-SCF-30159	KRM LOTO – LOCKABLE LOCKOUT TAGOUT STATION-SLEEK CLEAR FASCIA -30159	13	15
14	KKRM-K-LLTS-242210	KRM LOTO – LOCKABLE LOCKOUT TAGOUT STATION TINY HOLE-242210 2 SHELF	13	16
15	KKRM-K-LLTS-242210-1S	KRM LOTO – LOCKABLE LOCKOUT TAGOUT STATION TINY HOLE-242210 1 SHELF	13	17
16	KKRM-K-LLTS-21146	KRM LOTO – LOCKABLE LOCKOUT TAGOUT STATION TINY HOLE-21146	8	18
17	KKRM-K-LTS-483612	KRM LOTO –LOCKOUT TAGOUT STATION-TINY HOLE-483612	40	19
18	KKRM-K-LTS-36368	KRM LOTO –LOCKOUT TAGOUT STATION-TINY HOLE-36368	24	20
19	KKRM-K-MLTS-244812	KRM LOTO – MULTIPURPOSE LOCKOUT TAGOUT STATION-TINY HOLE 244812	26	21
20	KKRM-K-LTS-G-15155-1	KRM LOTO – LOCKOUT TAGOUT STATION- TINY HOLE- GREY-15155-1	0.650	22
21	KKRM-K-LTS-Y-15155-4	KRM LOTO – LOCKOUT TAGOUT STATION- TINY HOLE- YELLOW -15155-4	0.650	23
22	KKRM-K-LTST-PCF-Y/R15156-5	KRM LOTO – LOCKOUT TAGOUT STATION- POLYCARBONATE TINY HOLE	0.225	24
23	KKRM-K-LTS-MFY/R-15155-4	KRM LOTO – LOCKOUT TAGOUT STATION-MESH FASCIA-15155-4	0.650	25
24	KKRM-K-LTS-MFY/R-225155-4	KRM LOTO – LOCKOUT STATION-MESH FASCIA-225155-4	1	26

GSTIN No.: 06AAVPW8746Q1Z6,
PAN No.: AAVPW8746Q
TIN No.: 06821328889,
TAN No.: RTKKO3359G
IEC: 0509006116

M: 00 91 9810 291 381, 8900 544 881



OEM Manufacturer & Global Supplier of
Lockout Tagout & Safety Products

to meet
OSHA'S Lockout Tagout Standard
29 CFR, 1910.147&1910.269



www.locktagindia.com



GSTIN No.: 06AAECK2831L1Z1
PAN No.: AAECK2831L
TIN No.: 06824000112
CIN No.: U31903HR2011PTC042508
IEC: AAECK2831L

Telefax: 00 91 129 4021 381, 413 1381 (D)

Regd. Office:1H/31-A, N.I.T, Faridabad-121001 (Haryana) Postal Office:615, Sector-15-A, Faridabad-121007-Haryana-NCR-INDIA

www.krmcorporation.com | www.lockouttagouts.com | www.krmloto.com | www.locktagindia.com | www.lotoappliances.com

KRM LOTO – PORTABLE LOCKOUT TAGOUT STATION-18152

- **Material** – Mild steel with duly phosphate powder coated.
- Front fascia door on hinge base welded with box **having Tiny Holes for more durability & stability of box.**
- **There will be website www.krmloto.com on each box.**
- **Size** – 18" X 15" X 2"
- Provision of pre drilled hole on back side to mount any other surface.
- **2 ABS Slotted layer to keep loto items, can hang 15 locks in a single layer.**
- **1 Metal J hook layer (1 layer having 7 no's hook). for provision lock /hasp**
- 2 ABS Pocket keep loto tag and pen.
- One in-built Lock and a knob to hold.
- **Weight** – ± 4.5 Kg
- **Color** – Yellow,/Grey/Red/Green or as per quantity required
- **KKRM-K-PLTS-2S1J2P= 2 ABS Slotted , and one layer 7 no's metal j hook (34 Padlock can Hang)**
- **Note** -Can also make combination of metal j hook 7/12/17 as per requirement.
- **Note: Material design to be supply as per stock inventory.**



KKRM-K-PLTS-2S1J2P

GSTIN No.: 06AAPPW8746Q1Z6,
PAN No.: AAPPW8746Q
TIN No.: 06821328889,
TAN no.: RTKKO3359G
IEC: 0509006116

M: 00 91 9810 291 381, 8900 544 881



OEM Manufacturer & Global Supplier of
Lockout Tagout & Safety Products

to meet
OSHA'S Lockout Tagout Standard
29 CFR, 1910.147&1910.269



www.lotoappliances.com



GSTIN No.: 06AAECK2831L1Z1
PAN No.: AAECK2831L
TIN No.: 06824000112
CIN No.: U31903HR2011PTC042508
IEC: AAECK2831L

Telefax: 00 91 129 4021 381, 413 1381 (D)

Regd. Office:1H/31-A, N.I.T, Faridabad-121001 (Haryana) Postal Office:615, Sector-15-A, Faridabad-121007-Haryana-NCR-INDIA

www.krmcorporation.com | www.lockouttagouts.com | www.krmloto.com | www.locktagindia.com | www.lotoappliances.com

KRM LOTO – PORTABLE LOCKOUT TAGOUT STATION-BL-18152

- **Material** – Mild steel with duly phosphate powder coated.
- Front fascia door on hinge base welded with box **having Tiny Holes for more durability & stability of box.**
- **There will be website www.krmloto.com on each box.**
- **Size** – 18" X 15" X 2"
- Provision of pre drilled hole on back side to mount any other surface.
- Yellow ABS hook With 6 small layers, consisting of 7 holes in a single layer to hang padlock/ other items.
- Can hang 4 Padlock in one layer to keep proper gap in between 2 locks
- 1 Metal J hook layer (1 layer having 7 no's hook). for provision lock /hasp
- One in-built Lock and a knob to hold.
- 2 ABS Pocket keep loto tag and pen.
- **Weight** – ± 4.5 Kg
- **Color** – Yellow,/Grey/Red/Green or as per quantity required
- **KKRM-K-PLTS-6BL1J2P 6 ABS hook and 1 Layers 7no's metal j hook (24 Padlock and 5 lockout hasp can Hang)**
- **Note** -Can also make combination of metal j hook 7/12/17 as per requirement.
- **Note: Material design to be supply as per stock inventory.**



KKRM-K-PLTS-6BL1J2P

GSTIN No.: 06AAPPW8746Q1Z6,
PAN No.: AAPPW8746Q
TIN No.: 06821328889,
TAN no.: RTKKO3359G
IEC: 0509006116

M: 00 91 9810 291 381, 8900 544 881



OEM Manufacturer & Global Supplier of
Lockout Tagout & Safety Products

to meet
OSHA'S Lockout Tagout Standard
29 CFR, 1910.147&1910.269



www.locktagindia.com



GSTIN No.: 06AAECK2831L1Z1
PAN No.: AAECK2831L
TIN No.: 06824000112
CIN No.: U31903HR2011PTC042508
IEC: AAECK2831L

Telefax: 00 91 129 4021 381, 413 1381 (D)

Regd. Office:1H/31-A, N.I.T, Faridabad-121001 (Haryana) Postal Office:615, Sector-15-A, Faridabad-121007-Haryana-NCR-INDIA

www.krmcorporation.com | www.lockouttagouts.com | www.krmloto.com | www.locktagindia.com | www.lotoappliances.com

KRM LOTO – LOCKABLE LOCKOUT TAGOUT STATION-37590 (to keep multipurpose loto items)

- **Material** – Mild steel with duly phosphate powder coated.
- Front fascia door on hinge base welded with box having **Tiny Holes** for **more durability & stability of box.**
- **Size in mm** – 375 X 375 X 92.5 MM
- There will be website www.krmloto.com on each box.
- Provision of pre drilled hole on back side to mount any other surface.
- **Metal J Type hook / slots to hang padlocks, hasp , loto items etc. in the station.**
- **3 Layers of Metal J Type hook (1 layer having 17 no's hook). One lock & key / key chain separately can place /hang on alternate hook.**
- **9 padlock can hang individually in one metal layer of 17 hooks.**
- 2 lock can put / hag on one hook as per requirement
- One in-built Lock and a knob to hold.
- **Weight** – ± 4.5 kg
- **Color** – Yellow or Red as per volume required.
- **KKRM-K-LLTS-37590**
- **Total 3 layer**, each layer 17 hook # total 51 hooks
- **one layer welded in same color, 2 layer in loose form, you will have to fix at your end with nut bolts which we will provide.**
- **No screw / bolt for wall mounted box part of item as always extra.**
- **Note** -Can also make combination of metal j hook 7/12/17 as per requirement.
- **Note: material design to be supply as per stock inventory.**



KKRM-K-LLTS-37590

GSTIN No.: 06AAMPW8746Q1Z6,
PAN No.: AAVPW8746Q
TIN No.: 0682132889,
TAN no.: RTKKO3359G
IEC: 0509006116

M: 00 91 9810 291 381, 8900 544 881



OEM Manufacturer & Global Supplier of
Lockout Tagout & Safety Products

to meet
OSHA'S Lockout Tagout Standard
29 CFR, 1910.147&1910.269



www.lotoappliances.com



GSTIN No.: 06AAECK2831L1Z1
PAN No.: AAECK2831L
TIN No.: 06824000112
CIN No.: U31903HR2011PTC042508
IEC: AAECK2831L

Telefax: 00 91 129 4021 381, 413 1381 (D)

Regd. Office:1H/31-A, N.I.T, Faridabad-121001 (Haryana) Postal Office:615, Sector-15-A, Faridabad-121007-Haryana-NCR-INDIA

www.krmcorporation.com | www.lockouttagouts.com | www.krmloto.com | www.locktagindia.com | www.lotoappliances.com

KRM LOTO – LOCKABLE LOCKOUT TAGOUT STATION- 37590 (to keep multipurpose loto items)

- **Material** – Mild steel with duly phosphate powder coated.
- Front fascia door on hinge base welded with box having **Tiny Holes** for more durability & stability of box.
- **Size in mm** – 375 X 375 X 92.5 MM
- There will be website www.krmloto.com on each box.
- Provision of pre drilled hole on back side to mount any other surface.
- **Metal J Type hook / slots** to hang padlocks, hasp , loto items etc. in the station.
- **3 Layers of Metal J Type hook** -2 layer having 17no's hooks and other layer having 7 no's hook. One lock & key / key chain separately can place / hang on alternate hook
- **9 & 4 padlock** can hang individually in one metal layer of 17 & 7 hooks.
- 2 ABS Pocket keep loto tag and pen.
- 2 lock can put / hag on one hook as per requirement
- One in-built Lock and a knob to hold.
- **Weight** – ± 4.5 kg
- **Color** – Yellow or as per quantity required.
- **KKRM-K-LLTS-J2P-37590**
- **Total 3 layer**, 2 layer 17 hook & 1 layer 7 hook # total 41 hooks
- **one layer of 17 hook welded in same color, 1 layer 17 hook & 1 layer 7 hook in loose form, you will have to fix at your end with nut bolts which we will provide.**
- **No screw / bolt for wall mounted box part of item as always extra.**
- **Note** -Can also make combination of metal j hook 7/12/17 as per requirement.
- **Note: material design to be supply as per stock inventory.**



www.krmloto.com
KKRM-K-LLTS-J2P-37590

GSTIN No.: 06AACPW8746Q1Z6,
 PAN No.: AACPW8746Q
 TIN No.: 0682132889,
 TAN no.: RTKKO3359G
 IEC: 0509006116

M: 00 91 9810 291 381, 8900 544 881



OEM Manufacturer & Global Supplier of
 Lockout Tagout & Safety Products

to meet
 OSHA'S Lockout Tagout Standard
 29 CFR, 1910.147&1910.269



www.lotoappliances.com



GSTIN No.: 06AAECK2831L1Z1
 PAN No.: AAECK2831L
 TIN No.: 06824000112
 CIN No.: U31903HR2011PTC042508
 IEC: AAECK2831L

Telefax: 00 91 129 4021 381, 413 1381 (D)

Regd. Office: 1H/31-A, N.I.T, Faridabad-121001 (Haryana) Postal Office: 615, Sector-15-A, Faridabad-121007-Haryana-NCR-INDIA

www.krmcorporation.com | www.lockouttagouts.com | www.krmloto.com | www.locktagindia.com | www.lotoappliances.com

KRM LOTO – LOCKABLE LOCKOUT TAGOUT STATION-37550

- **Material** – Mild steel with duly phosphate powder coated.
- Front fascia door on hinge base welded with box having **Tiny Holes** for more durability & stability of box.
- There will be website www.krmloto.com on each box.
- **Size in mm** – 375 X 375X 50 MM
- Provision of pre drilled hole on back side to mount any other surface.
- **Metal J Type hook / slots** to hang padlocks, hasp , loto items etc. in the station.
- **3 Layers of Metal J Type hook** -1 layer having 17no's hooks 9 padlock can hang individually in one metal layer of 17 hooks.
- One in-built Lock and a knob to hold.
- **Colour** – Yellow
- **KKRM-K-LLTPS-37550 = 3 Layers 17no's Metal j hook (27 padlock can hang.**
- **Total 3 layer**, each layer 17 hook # total 51 hooks
- **one layer welded in same color, 2 layer in loose form, you will have to fix at your end with nut bolts which we will provide**
- **No screw / bolt for wall mounted box part of item as always extra.**
- **Note** - Can also make combination of metal j hook 7/12/17 as per requirement.
- **Note: Material design to be supply as per stock inventory.**



KKRM-K-LLTS-37550

GSTIN No.: 06AAPVW8746Q1Z6,
PAN No.: AAVPW8746Q
TIN No.: 06821328889,
TAN no.: RTKKO3359G
IEC: 0509006116

M: 00 91 9810 291 381, 8900 544 881



OEM Manufacturer & Global Supplier of
Lockout Tagout & Safety Products

to meet
OSHA'S Lockout Tagout Standard
29 CFR, 1910.147&1910.269



www.lotoappliances.com



GSTIN No.: 06AAECK2831L1Z1
PAN No.: AAECK2831L
TIN No.: 06824000112
CIN No.: U31903HR2011PTC042508
IEC: AAECK2831L

Telefax: 00 91 129 4021 381, 413 1381 (D)

Regd. Office:1H/31-A, N.I.T, Faridabad-121001 (Haryana) Postal Office:615, Sector-15-A, Faridabad-121007-Haryana-NCR-INDIA

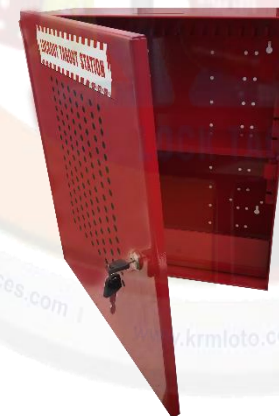
www.krmcorporation.com | www.lockouttagouts.com | www.krmloto.com | www.locktagindia.com | www.lotoappliances.com

KRM LOTO - LOCKOUT TAGOUT STATION -16146

- **Material** – Mild steel with duly phosphate powder coated.
- Front fascia door on hinge base welded with box having Tiny Holes for more durability & stability of box.
- **Size** –16" X 14 X 6"
- There will be website www.krmloto.com on each box.
- Provision of pre drilled hole on back side to mount any other surface.
- **Metal J Type hook / slots** to hang padlocks, hasp , loto items etc. in the station.
- **1 Layers of Metal J Type hook (1 layer having 17 no's hook). One lock & key/key chain separately can place /hang on alternate hook**
- **9 padlock can hang individually in one metal layer of 17 hooks.**
- 2 lock can put / hag on one hook as per requirement .
- One Adjustable shelves for placing the items
- One in-built Lock and a knob to hold.
- **Weight** – ± 6.5 kg
- **Color** – Yellow or as per quantity required.
- **KKRM-K-PCLS-Y= 1Layer Metal j hook (9 Padlock can Hang)**
- **KKRM-K-PCLS-R= 1Layer Metal j hook (9 Padlock can Hang)**
- **one layer 17 hook welded in same color**
- **No screw / bolt for wall mounted box part of item as always extra.**
- **Note -Can also make combination of metal j hook 7/12/17 as per requirement.**
- **Note: Material design to be supply as per stock inventory.**



KKRM-K-PCLS-R KKRM-K-PCLS-Y



GSTIN No.: 06AAVPW8746Q1Z6,
PAN No.: AAVPW8746Q
TIN No.: 06821328889,
TAN no.: RTKKO3359G
IEC: 0509006116

M: 00 91 9810 291 381, 8900 544 881



OEM Manufacturer & Global Supplier of
Lockout Tagout & Safety Products

to meet
OSHA'S Lockout Tagout Standard
29 CFR, 1910.147&1910.269



www.lotoappliances.com



GSTIN No.: 06AAECK2831L1Z1
PAN No.: AAECK2831L
TIN No.: 06824000112
CIN No.: U31903HR2011PTC042508
IEC: AAECK2831L

Telefax: 00 91 129 4021 381, 413 1381 (D)

Regd. Office:1H/31-A, N.I.T, Faridabad-121001 (Haryana) Postal Office:615, Sector-15-A, Faridabad-121007-Haryana-NCR-INDIA

www.krmcorporation.com | www.lockouttagouts.com | www.krmloto.com | www.locktagindia.com | www.lotoappliances.com

KRM LOTO – LOCKOUT TAGOUT STATION-OPAQUE FASCIA-16146

- **Material** – Mild steel with duly phosphate powder coated.
- Front side Opaque fascia with border frame.
- **Size** –16" X 14 X 6"
- **There will be website www.krmloto.com on each box.**
- Provision of pre drilled hole on back side to mount any other surface.
- **Metal J Type hook / slots to hang padlocks, hasp , loto items etc. in the station.**
- **1 Layers of Metal J Type hook (1 layer having 17 no's hook). One lock & key / key chain separately can place /hang on alternate hook.**
- **9 padlock can hang individually in one metal layer of 17 hooks.**
- 2 lock can put / hag on one hook as per requirement.
- One Adjustable shelves for placing the items
- One in-built Lock and a knob to hold.
- **Weight** – ± 7 kg
- **Color** – Yellow or as per quantity required.
- **KKRM-K-Y-PCLS-P/KKRM-K-R-PCLS-P**
- **one layer 17 hook welded in same color.**
- **No screw / bolt for wall mounted box part of item as always extra.**
- **Note - Can also make combination of metal j hook 7/12/17 as per requirement.**
- **Note: Material design to be supply as per stock inventory.**



KKRM-K-Y-PCLS-P



KKRM-K-G-PCLS-P



KKRM-K-R-PCLS-P

GSTIN No.: 06AACPW8746Q126,
PAN No.: AACPW8746Q
TIN No.: 06821328889,
TAN no.: RTKKO3359G
IEC: 0509006116

M: 00 91 9810 291 381, 8900 544 881



OEM Manufacturer & Global Supplier of
Lockout Tagout & Safety Products

to meet
OSHA'S Lockout Tagout Standard
29 CFR, 1910.147&1910.269



www.lotoappliances.com



GSTIN No.: 06AAECK2831L12I
PAN No.: AAECK2831L
TIN No.: 06824000112
CIN No.: U31903HR2011PTC042508
IEC: AAECK2831L

Telefax: 00 91 129 4021 381, 413 1381 (D)

Regd. Office: 1H/31-A, N.I.T, Faridabad-121001 (Haryana) Postal Office: 615, Sector-15-A, Faridabad-121007-Haryana-NCR-INDIA

www.krmcorporation.com | www.lockouttagouts.com | www.krmloto.com | www.locktagindia.com | www.lotoappliances.com

KRM LOTO – LOCKOUT TAGOUT STATION WITH GROUP LOTO BOX

- **Material**- Mild steel with duly phosphate powder coated.
- Front fascia door on hinge base welded with box **having Tiny Holes for more durability & stability of box.**
- **Size** – 16" X 14" X 6" + 4" X 14" X 6"
- **There will be website www.krmloto.com on each box.**
- Having provision of slots on the top layer to drop key or document after locking.
- Provision of optional handle which make it portable so that can be carried any where.
- Provision of pre drilled hole on back side to mount any other surface.
- Three Adjustable shelves for placing the items. Shelves can be adjusted either ways up or down.
- One slider covered block as an additional advantage to the station that can be used to store LOTO items as well as can be used for group locking.
- One in-built Lock and a knob to hold.
- **Weight** – ±7.5 kg
- **KKRM-K-LCGS-Y**
- **Color** – Yellow, Red or as per quantity required.
- **No screw / bolt for wall mounted box part of item as always extra.**
- **Note: Material design to be supply as per stock inventory.**



KKRM-K-LCGS-Y

GSTIN No.: 06AAMPW8746Q1Z6,
PAN No.: AAVPW8746Q
TIN No.: 06821328889,
TAN no.: RTKKO3359G
IEC: 0509006116

M: 00 91 9810 291 381, 8900 544 881



OEM Manufacturer & Global Supplier of
Lockout Tagout & Safety Products

to meet
OSHA'S Lockout Tagout Standard
29 CFR, 1910.147&1910.269



www.lotoappliances.com



GSTIN No.: 06AAECK2831L1Z1
PAN No.: AAECK2831L
TIN No.: 06824000112
CIN No.: U31903HR2011PTC042508
IEC: AAECK2831L

Telefax: 00 91 129 4021 381, 413 1381 (D)

Regd. Office: 1H/31-A, N.I.T, Faridabad-121001 (Haryana) Postal Office: 615, Sector-15-A, Faridabad-121007-Haryana-NCR-INDIA

www.krmcorporation.com | www.lockouttagouts.com | www.krmloto.com | www.locktagindia.com | www.lotoappliances.com

KRM LOTO – LOCKABLE LOCKOUT TAGOUT STATION-30156

- **Material** – Mild steel with duly phosphate powder coated.
- Front fascia door on hinge base welded with box having **Tiny Holes** for more **durability & stability of box.**
- **Size** – 30" X 15" X 6"
- **There will be website www.krmloto.com on each box.**
- Provision of pre drilled hole on back side to mount any other surface.
- **Metal J Type hook / slots to hang padlocks, hasp , loto items etc. in the station.**
- **2 Layers of Metal J Type hook (1 layer having 17 no's hook). One lock & key / key chain separately can place /hang on alternate hook.**
- **9 padlock can hang individually in one metal layer of 17 hooks.**
- 2 lock can put / hag on one hook as per requirement
- One adjustable shelf
- One / two in-built Lock and a knob to hold.
- **Weight** – ± 10 kg
- **Color** – Yellow or as per quantity required.
- **KKRM-K-LLTS-30156**
- **Total 2 layer**, each layer 17 hook # total 34 hooks
- **one layer welded in same color, 1 layer in loose form, you will have to fix at your end with nut bolts which we will provide**
- **No screw / bolt for wall mounted box part of item as always extra.**
- **Note** - Can also make combination of metal j hook 7/12/17 as per requirement.
- **Note: Material design to be supply as per stock inventory.**



KKRM-K-LLTS-30156

GSTIN No.: 06AAPPW8746Q1Z6,
PAN No.: AAPPW8746Q
TIN No.: 06821328889,
TAN no.: RTKKO3359G
IEC: 0509006116

M: 00 91 9810 291 381, 8900 544 881

Regd. Office: 1H/31-A, N.I.T, Faridabad-121001 (Haryana) Postal Office: 615, Sector-15-A, Faridabad-121007-Haryana-NCR-INDIA

www.krmcorporation.com

www.lockouttagouts.com

www.krmloto.com

www.locktagindia.com

www.lotoappliances.com



OEM Manufacturer & Global Supplier of
Lockout Tagout & Safety Products

to meet
OSHA'S Lockout Tagout Standard
29 CFR, 1910.147&1910.269



www.lotoappliances.com

Email: info@krmloto.com, info@krmcorporation.com, krmloto@gmail.com



GSTIN No.: 06AAECK2831L1Z1
PAN No.: AAECK2831L
TIN No.: 06824000112
CIN No.: U31903HR2011PTC042508
IEC: AAECK2831L

Telefax: 00 91 129 4021 381, 413 1381 (D)

KRM LOTO – LOCKABLE LOCKOUT TAGOUT STATION- MESH FASCIA -30156

- **Material** – Mild steel with duly phosphate powder coated.
- Front side mesh Fascia with border frame.
- **Size** – 30" X 15" X 6"
- **There will be website www.krmloto.com on each box.**
- Provision of pre drilled hole on back side to mount any other surface.
- **Metal J Type hook / slots to hang padlocks, hasp , loto items etc. in the station.**
- **2 Layers of Metal J Type hook (1 layer having 17 no's hook). One lock & key / key chain separately can place /hang on alternate hook.**
- **9 padlock can hang individually in one metal layer of 17 hooks.**
- 2 lock can put / hag on one hook as per requirement
- One adjustable shelf
- One / two in-built Lock and a knob to hold.
- **Weight** – ± 10 kg
- **Color** – Yellow or as per quantity required.
- **KKRM-K-LLTS-MF-30156**
- **Total 2 layer**, each layer 17 hook # total 34 hooks
- **one layer welded in same color, 1 layer in loose form, you will have to fix at your end with nut bolts which we will provide**
- **No screw / bolt for wall mounted box part of item as always extra.**
- **Note - Can also make combination of metal j hook 7/12/17 as per requirement.**
- **Note: Material design to be supply as per stock inventory.**



KKRM-K-LLTS-MF-30156

GSTIN No.: 06AAMPW8746Q1Z6,
PAN No.: AAVPW8746Q
TIN No.: 06821328889,
TAN no.: RTKKO3359G
IEC: 0509006116

M: 00 91 9810 291 381, 8900 544 881



OEM Manufacturer & Global Supplier of
Lockout Tagout & Safety Products

to meet
OSHA'S Lockout Tagout Standard
29 CFR, 1910.147&1910.269



www.lockouttagouts.com



GSTIN No.: 06AAECK2831L1Z1
PAN No.: AAECK2831L
TIN No.: 06824000112
CIN No.: U31903HR2011PTC042508
IEC: AAECK2831L

Telefax: 00 91 129 4021 381, 413 1381 (D)

Regd. Office:1H/31-A, N.I.T, Faridabad-121001 (Haryana) Postal Office:615, Sector-15-A, Faridabad-121007-Haryana-NCR-INDIA

www.krmcorporation.com

www.lockouttagouts.com

www.krmloto.com

www.locktagindia.com

www.lotoappliances.com

KRM LOTO – LOCKABLE LOCKOUT TAGOUT STATION SLEEK CLEAR FASCIA- 30156

- **Material** – Metal steel with duly phosphate powder coated.
- Front side sleek Clear Fascia in door for visibility.
- **Size** – 30" X 15" X 6"
- **There will be website www.krmloto.com on each box.**
- Provision of pre drilled hole on back side to mount any other surface.
- **Metal J Type hook / slots to hang padlocks, hasp , loto items etc. in the station.**
- **2 Layers of Metal J Type hook (1 layer having 17 no's hook). One lock & key / key chain separately can place /hang on alternate hook if require to be put lock there**
- **Multiple items can put / hag on one hook as per requirement.**
- One /Two in-built Locks and one handle on door.
- **Weight** – ± 10 kg
- **Color** – RED or any other colour on quantity base only .
- **KKRM-K-LLTS-S-30156 having 2 layer of J hook and 1 shelf**
- **Total 2 layer, each layer 17 hook # total 34 hooks**
- **one layer welded in same color, 1 layer in loose form, you will have to fix at your end with nut bolts which we will provide**
- **No screw / bolt for wall mounted box part of item as always extra.**
- **Note - Can also make combination of metal j hook 7/12/17 as per requirement.**
- **Note: Material design to be supply as per stock inventory.**



KKRM-K-LLTS-SCF-30156

GSTIN No.: 06AAMPW8746Q1Z6,
PAN No.: AAVPW8746Q
TIN No.: 06821328889,
TAN no.: RTKKO3359G
IEC: 0509006116

M: 00 91 9810 291 381, 8900 544 881



OEM Manufacturer & Global Supplier of
Lockout Tagout & Safety Products

to meet
OSHA'S Lockout Tagout Standard
29 CFR, 1910.147&1910.269



www.locktagindia.com



GSTIN No.: 06AAECK2831L1Z1
PAN No.: AAECK2831L
TIN No.: 06824000112
CIN No.: U31903HR2011PTC042508
IEC: AAECK2831L

Telefax: 00 91 129 4021 381, 413 1381 (D)

Regd. Office: 1H/31-A, N.I.T, Faridabad-121001 (Haryana) Postal Office: 615, Sector-15-A, Faridabad-121007-Haryana-NCR-INDIA

www.krmcorporation.com | www.lockouttagouts.com | www.krmloto.com | www.locktagindia.com | www.lotoappliances.com

KRM LOTO – LOCKABLE LOCKOUT TAGOUT STATION-30159

- **Material** – Mild steel with duly phosphate powder coated.
- Front fascia door on hinge base welded with box **having Tiny Holes for more durability & stability of box.**
- **Size** – 30" X 15" X 9"
- **There will be website www.krmloto.com on each box.**
- Provision of pre drilled hole on back side to mount any other surface.
- **Metal J Type hook / slots to hang padlocks, hasp , loto items etc. in the station.**
- **2 Layers of Metal J Type hook (1 layer having 17 no's hook). One lock & key / key chain separately can place /hang on alternate hook.**
- **9 padlock can hang individually in one metal layer of 17 hooks.**
- 2 lock can put / hag on one hook as per requirement
- One adjustable shelf
- One / Two in-built Lock and a knob to hold.
- **Weight** – ± 13 kg
- **Color** – Yellow or as per quantity required.
- **KKRM-K-LLTS-30159**
- **Total 2 layer, each layer 17 hook # total 34 hooks**
- **one layer welded in same color, 1 layer in loose form, you will have to fix at your end with nut bolts which we will provide**
- **No screw / bolt for wall mounted box part of item as always extra.**
- **Note - Can also make combination of metal j hook 7/12/17 as per requirement.**
- **Note: Material design to be supply as per stock inventory.**



KKRM-K-LLTS-30159

GSTIN No.: 06AAVPW8746Q1Z6,
PAN No.: AAVPW8746Q
TIN No.: 06821328889,
TAN no.: RTKKO3359G
IEC: 0509006116

M: 00 91 9810 291 381, 8900 544 881



OEM Manufacturer & Global Supplier of
Lockout Tagout & Safety Products

to meet
OSHA'S Lockout Tagout Standard
29 CFR, 1910.147&1910.269



www.lotoappliances.com



GSTIN No.: 06AAECK2831L1Z1
PAN No.: AAECK2831L
TIN No.: 06824000112
CIN No.: U31903HR2011PTC042508
IEC: AAECK2831L

Telefax: 00 91 129 4021 381, 413 1381 (D)

Regd. Office:1H/31-A, N.I.T, Faridabad-121001 (Haryana) Postal Office:615, Sector-15-A, Faridabad-121007-Haryana-NCR-INDIA

www.krmcorporation.com | www.lockouttagouts.com | www.krmloto.com | www.locktagindia.com | www.lotoappliances.com

KRM LOTOLOCKABLE LOCKOUT TAGOUT –STATION SLEEK CLEAR FASCIA- 30159

- **Material** – Metal steel with duly phosphate powder coated.
- Front side sleek Clear Fascia in door for visibility.
- **Size** – 30" X 15" X 9"
- **There will be website www.krmloto.com on each box.**
- Provision of pre drilled hole on back side to mount any other surface.
- **Metal J Type hook / slots to hang padlocks, hasp , loto items etc. in the station.**
- **2 Layers of Metal J Type hook (1 layer having 17 no's hook). One lock & key / key chain separately can place /hang on alternate hook if require to be put lock there.**
- Multiple items can put / hag on one hook as per requirement
- One /Two in-built Locks and one handle on door
- **Weight** – \pm 13 kg
- **Color** – RED or any other colour on quantity base only.
- **KKRM-K-LLTS-CFS-30159 having 2 layer of J hook and 1 shell**
- **Total 2 layer**, each layer 17 hook # total 34 hooks
- **one layer welded in same color, 1 layer in loose form, you will have to fix at your end with nut bolts which we will provide**
- **No screw / bolt for wall mounted box part of item as always extra.**
- **Note** - Can also make combination of metal j hook 7/12/17 as per requirement.
- **Note: Material design to be supply as per stock inventory.**



KKRM-K-LLTS-SCF-30159

GSTIN No.: 06AACPW8746Q1Z6,
PAN No.: AACPW8746Q
TIN No.: 06821328889,
TAN no.: RTKKO3359G
IEC: 0509006116

M: 00 91 9810 291 381, 8900 544 881



OEM Manufacturer & Global Supplier of
Lockout Tagout & Safety Products

to meet
OSHA'S Lockout Tagout Standard
29 CFR, 1910.147&1910.269



www.lotoappliances.com



GSTIN No.: 06AAECK2831L1Z1
PAN No.: AAECK2831L
TIN No.: 06824000112
CIN No.: U31903HR2011PTC042508
IEC: AAECK2831L

Telefax: 00 91 129 4021 381, 413 1381 (D)

Regd. Office:1H/31-A, N.I.T, Faridabad-121001 (Haryana) Postal Office:615, Sector-15-A, Faridabad-121007-Haryana-NCR-INDIA

www.krmcorporation.com | www.lockouttagouts.com | www.krmloto.com | www.locktagindia.com | www.lotoappliances.com

KRM LOTO – LOCKABLE LOCKOUT TAGOUT STATION-242210

- **Material** – Mild steel with duly phosphate powder coated.
- Front fascia door on hinge base welded with box having **Tiny Holes** for **more durability & stability of box.**
- **Size** –24" X 22 X 10"
- **There will be website www.krmloto.com on each box.**
- Provision of pre drilled hole on back side to mount any other surface.
- **Metal J Type hook / slots to hang padlocks, hasp , loto items etc. in the station.**
- **2 Layers of Metal J Type hook - 1 layer having 17no's hooks and 1 layer having 7 no's hook. One lock & key / key chain separately can place /hang on alternate hook**
- **13 padlocks can hang individually in one layer combination of 17+7 hooks.**
- 2 lock can put / hag on one hook as per requirement .
- Two Adjustable shelves for placing the items
- One in-built Lock and a knob to hold.
- **Weight** – ±13 kg
- **Color** – Yellow or as per quantity required.
- **KRM LOTO PART NO : KCRM-K-LLTS-242210**
- **Total 2 layer, 1 layer 17 hook & 1 layer 7 hook # total 24 hooks**
- **All layers are welded in same color.**
- **No screw / bolt for wall mounted box part of item as always extra.**
- **Note** -Can also make combination of metal j hook 7/12/17 as per requirement.
- **Note: Material design to be supply as per stock inventory.**



KCRM-K-LLTS-242210

GSTIN No.: 06AAMPW8746Q1Z6,
PAN No.: AAMPW8746Q
TIN No.: 06821328889,
TAN no.: RTKKO3359G
IEC: 0509006116

M: 00 91 9810 291 381, 8900 544 881



OEM Manufacturer & Global Supplier of
Lockout Tagout & Safety Products

to meet
OSHA'S Lockout Tagout Standard
29 CFR, 1910.147&1910.269



www.lotoappliances.com



GSTIN No.: 06AAECK2831L1Z1
PAN No.: AAECK2831L
TIN No.: 06824000112
CIN No.: U31903HR2011PTC042508
IEC: AAECK2831L

Telefax: 00 91 129 4021 381, 413 1381 (D)

Regd. Office:1H/31-A, N.I.T, Faridabad-121001 (Haryana) Postal Office:615, Sector-15-A, Faridabad-121007-Haryana-NCR-INDIA

www.krmcorporation.com

www.lockouttagouts.com

www.krmloto.com

www.locktagindia.com

www.lotoappliances.com

KRM LOTO – LOCKABLE LOCKOUT TAGOUT STATION-242210

- **Material** – Mild steel with duly phosphate powder coated.
- Front fascia door on hinge base welded with box having **Tiny Holes** for more durability & stability of box.
- **Size** –24" X 22 X 10"
- **There will be website www.krmloto.com on each box.**
- Provision of pre drilled hole on back side to mount any other surface.
- **Metal J Type hook / slots to hang padlocks, hasp , loto items etc. in the station.**
- **2 Layers of Metal J Type hook - 1 layer having 17no's hooks and 1 layer having 7 no's hook. One lock & key / key chain separately can place /hang on alternate hook**
- **13 padlocks can hang individually in one layer combination of 17+7 hooks.**
- 2 lock can put / hag on one hook as per requirement .
- One Adjustable shelves for placing the items
- One in-built Lock and a knob to hold.
- **Weight** – ±13 kg
- **Color** – Yellow or as per quantity required.
- **KRM LOTO PART NO : KCRM-K-LLTS-242210-1S**
- **Total 2 layer, 1 layer 17 hook & 1 layer 7 hook # total 24 hooks**
- **All layers are welded in same color.**
- **No screw / bolt for wall mounted box part of item as always extra.**
- **Note -Can also make combination of metal j hook 7/12/17 as per requirement.**
- **Note: Material design to be supply as per stock inventory.**



KCRM-K-LLTS-242210-1S

GSTIN No.: 06AACPW8746Q1Z6,
PAN No.: AACPW8746Q
TIN No.: 06821328889,
TAN no.: RTKKO3359G
IEC: 0509006116

M: 00 91 9810 291 381, 8900 544 881



OEM Manufacturer & Global Supplier of
Lockout Tagout & Safety Products

to meet
OSHA'S Lockout Tagout Standard
29 CFR, 1910.147&1910.269



www.lotoappliances.com



GSTIN No.: 06AAECK2831L1Z1
PAN No.: AAECK2831L
TIN No.: 06824000112
CIN No.: U31903HR2011PTC042508
IEC: AAECK2831L

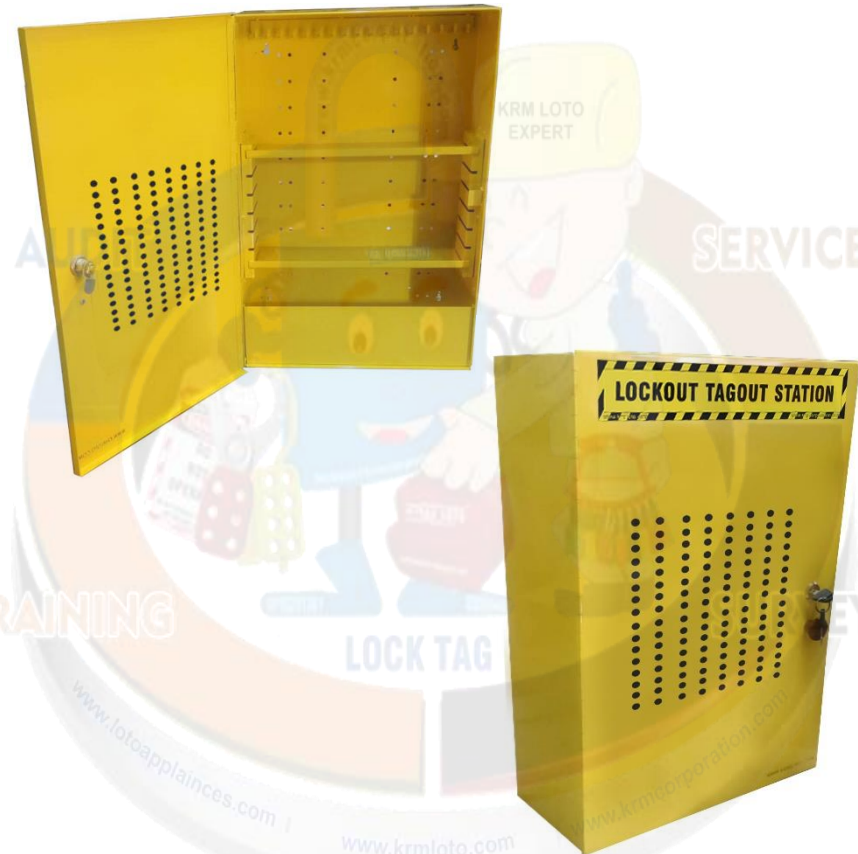
Telefax: 00 91 129 4021 381, 413 1381 (D)

Regd. Office: 1H/31-A, N.I.T, Faridabad-121001 (Haryana) Postal Office: 615, Sector-15-A, Faridabad-121007-Haryana-NCR-INDIA

www.krmcorporation.com | www.lockouttagouts.com | www.krmloto.com | www.locktagindia.com | www.lotoappliances.com

KRM LOTO – LOCKABLE LOCKOUT TAGOUT STATION-21146

- **Material** – Mild steel with duly phosphate powder coated.
- Front fascia door on hinge base welded with box having **Tiny Holes** for more durability & stability of box.
- **Size** – 21" X 14 X 6"
- **There will be website www.krmloto.com on each box.**
- Provision of pre drilled hole on back side to mount any other surface.
- **Metal J Type hook / slots to hang padlocks, hasp, loto items etc. in the station.**
- **1 Layers of Metal J Type hook (1 layer having 17 no's hook). One lock & key / key chain separately can place /hang on alternate hook.**
- **9 padlock can hang individually in one metal layer of 17 hooks.**
- 2 lock can put / hang on one hook as per requirement .
- 2 Adjustable shelves for placing the items.
- One in-built Lock and a knob to hold.
- **Weight** – ±8 kg
- **Color** – Yellow or as per quantity required.
- **1 layer 17 hook welded in same color**
- **Note - Can also make combination of metal j hook 7/12/17 as per requirement.**
- **Note: Material design to be supply as per stock inventory.**



KKRM-K-LLTS-21146

GSTIN No.: 06AAPPW8746Q1Z6,
PAN No.: AAPPW8746Q
TIN No.: 06821328889,
TAN no.: RTKKO3359G
IEC: 0509006116

M: 00 91 9810 291 381, 8900 544 861



OEM Manufacturer & Global Supplier of
Lockout Tagout & Safety Products

to meet
OSHA'S Lockout Tagout Standard
29 CFR, 1910.147&1910.269



www.lotoappliances.com



GSTIN No.: 06AAECK2831L1Z1
PAN No.: AAECK2831L
TIN No.: 06824000112
CIN No.: U31903HR2011PTC042508
IEC: AAECK2831L

Telefax: 00 91 129 4021 381, 413 1381 (D)

Regd. Office: 1H/31-A, N.I.T, Faridabad-121001 (Haryana) | Postal Office: 615, Sector-15-A, Faridabad-121007-Haryana-NCR-INDIA

www.krmcorporation.com

www.lockouttagouts.com

www.krmloto.com

www.locktagindia.com

www.lotoappliances.com

KRM LOTO – LOCKOUT TAGOUT STATION-483612

- **Material** – Mild steel with duly phosphate powder coated.
- Front fascia door on hinge base welded with box **having Tiny Holes for more durability & stability of box.**
- **Size** – 36" X 48" X 12"
- **There will be website www.krmloto.com on each box.**
- Provision of pre drilled hole on back side to mount any other surface.
- Metal J Type hook / slots to hang padlocks in the station.
- 15 Layers of Metal J Type hook -10 layer having 17no's hooks and 5 layer having 7 no's hook. One lock & key / key chain separately can place /hang on alternate hook
- 9 & 4 padlock can hang individually in one metal layer of 17 & 7 hooks.
- One/two adjustable shelf on additional requirement
- 2 lock can put / hag on one hook as per requirement
- One / two in-built Lock and a knob to hold.
- **Weight** – ± 40 kg
- **Color** – Yellow or as per Volume requirement.
- **KKRM-K-LTS-483612**
- **Total 15 layer, 10 layer 17 hook & 5 layer 7 hook # total 205 hooks**
- **two layer of 17 hook & one layer of 7 hook welded in same color, 8 layer of 17 hook & 4 layer of 7 hook in loose form, you will have to fix at your end with nut bolts which we will provide.**
- **No screw / bolt for wall mounted box part of item as always extra.**
- **Note** -Can also make combination of metal j hook 7/12/17 as per requirement.



KKRM-K-LTS-483612



GSTIN No.: 06AAMPW8746Q1Z6,
PAN No.: AAMPW8746Q
TIN No.: 06821328889,
TAN no.: RTKKO3359G
IEC: 0509006116

M: 00 91 9810 291 381, 8900 544 881



OEM Manufacturer & Global Supplier of
Lockout Tagout & Safety Products

to meet
OSHA'S Lockout Tagout Standard
29 CFR, 1910.147&1910.269



www.lotoappliances.com



GSTIN No.: 06AAECK2831L1Z1
PAN No.: AAECK2831L
TIN No.: 06824000112
CIN No.: U31903HR2011PTC042508
IEC: AAECK2831L

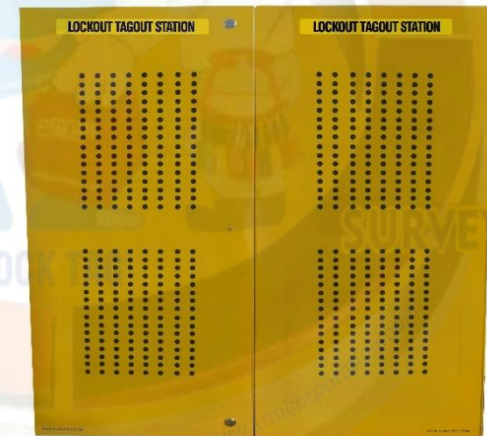
Telefax: 00 91 129 4021 381, 413 1381 (D)

Regd. Office:1H/31-A, N.I.T, Faridabad-121001 (Haryana) Postal Office:615, Sector-15-A, Faridabad-121007-Haryana-NCR-INDIA

www.krmcorporation.com | www.lockouttagouts.com | www.krmloto.com | www.locktagindia.com | www.lotoappliances.com

KRM LOTO – MULTIPURPOSE LOCKOUT TAGOUT STATION-36368

- **Material** – Mild steel with duly phosphate powder coated.
- Front fascia door on hinge base welded with box **having Tiny Holes for more durability & stability of box.**
- **Size** – 36" X 36" X 8"
- **There will be website www.krmloto.com on each box.**
- Provision of pre drilled hole on back side to mount any other surface.
- Metal J Type hook / slots to hang padlocks in the station.
- 6 Layers of Metal J Type hook -4 layer having 17no's hooks and 2 layer having 7 no's hook. One lock & key / key chain separately can place /hang on alternate hook.
- 9 & 4 padlock can hang individually in one metal layer of 17 & 7 hooks.
- One/two adjustable shelf on additional requirement
- 2 lock can put / hag on one hook as per requirement
- One / two in-built Lock and a knob to hold.
- **Weight** – +24 kg
- **Color** – Yellow or as per Volume requirement.
- **KKRM-K-MLTS-36368**
- **Total 6 layer, 4 layer 17 hook & 2 layer 7 hook # total 82 hooks**
- **All layers of 17 hook & 7 hook welded in same color.**
- **No screw / bolt for wall mounted box part of item as always extra.**
- **Note** -Can also make combination of metal j hook 7/12/17 as per requirement.



KKRM-K-MLTS-36368

GSTIN No.: 06AAPPW8746Q1Z6,
PAN No.: AAPPW8746Q
TIN No.: 06821328889,
TAN no.: RTKKO3359G
IEC: 0509006116

M: 00 91 9810 291 381, 8900 544 881



OEM Manufacturer & Global Supplier of
Lockout Tagout & Safety Products

to meet
OSHA'S Lockout Tagout Standard
29 CFR, 1910.147 & 1910.269



www.lotoappliances.com



GSTIN No.: 06AAECK2831L1Z1
PAN No.: AAECK2831L
TIN No.: 06824000112
CIN No.: U31903HR2011PTC042508
IEC: AAECK2831L

Telefax: 00 91 129 4021 381, 413 1381 (D)

Regd. Office: 1H/31-A, N.I.T, Faridabad-121001 (Haryana) Postal Office: 615, Sector-15-A, Faridabad-121007-Haryana-NCR-INDIA

www.krmcorporation.com | www.lockouttagouts.com | www.krmloto.com | www.locktagindia.com | www.lotoappliances.com

KRM LOTO – MULTIPURPOSE LOCKOUT TAGOUT STATION-244812

- **Material** – Mild steel with duly phosphate powder coated.
- Front fascia door on hinge base welded with box having **Tiny Holes** for more durability & stability of box.
- **Size** – 24" X 48" X 12"
- **There will be website www.krmloto.com on each box.**
- Provision of pre drilled hole on back side to mount any other surface.
- Metal J Type hook / slots to hang padlocks in the station.
- **6 Layers of Metal J Type hook -4 layer having 17no's hooks and 2 layer having 12 no's hook. One lock & key separately can place /hang on alternate hook**
- **9 & 6 padlock can hang individually in one metal layer of 17 & 12 hooks.**
- 2 lock can put / hag on one hook as per requirement
- One adjustable shelf
- 1/2/3 in-built Lock and a knob to hold.
- **Weight** – +35 kg
- **Color** – Yellow or as per quantity required.
- **KKRM-K-MLTS-244812**
- **Total 20 layer, 10 layer 17 hook & 10 layer 12 hook # total 290 hooks**
- **two layer of 17 hook & one layer of 12 hook welded in same color, 2 layer of 17 hook & 1 layer of 12 hook in loose form, you will have to fix at your end with nut bolts which we will provide**
- **No screw / bolt for wall mounted box part of item as always extra.**
- **Note -Can also make combination of metal j hook 7/12/17 as per requirement.**



KKRM-K-MLTS-244812

GSTIN No.: 06AAPPW8746Q1Z6,
PAN No.: AAPPW8746Q
TIN No.: 06821328889,
TAN no.: RTKKO3359G
IEC: 0509006116

M: 00 91 9810 291 381, 8900 544 881

Regd. Office: 1H/31-A, N.I.T, Faridabad-121001 (Haryana) Postal Office: 615, Sector-15-A, Faridabad-121007-Haryana-NCR-INDIA

www.krmcorporation.com

www.lockouttagouts.com

www.krmloto.com

www.locktagindia.com

www.lotoappliances.com



OEM Manufacturer & Global Supplier of
Lockout Tagout & Safety Products

to meet
OSHA'S Lockout Tagout Standard
29 CFR, 1910.147&1910.269

Email: info@krmloto.com, info@krmcorporation.com, krmloto@gmail.com

www.lotoappliances.com

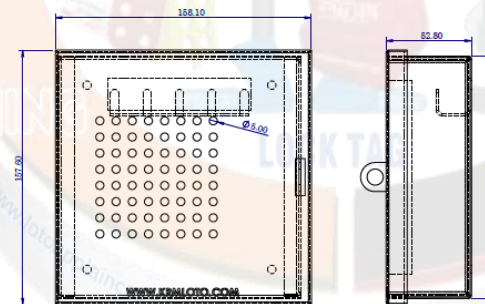


GSTIN No.: 06AAECK2831L1Z1
PAN No.: AAECK2831L
TIN No.: 06824000112
CIN No.: U31903HR2011PTC042508
IEC: AAECK2831L

Telefax: 00 91 129 4021 381, 413 1381 (D)

KRM LOTO – LOCKOUT PADLOCK STATION- GREY-15155-1

- KRM LOTO Key and documentation box comprising of 1 small boxes with 1 in built locking hook.
- Made from mild steel with duly phosphate powder coated.
- Resistant to corrosion.
- **Size of individual small box** – 150 mm x 150 mm x 50 mm.
- **Weight of individual small box** – ±660 gms
- Provision of 1 slot for locking purpose on each box.
- 1 Layer of Metal J Type hook (1 layer having 7 no's hook)
One lock & key separately can place/hang on alternate hook.
- 4 padlock can hang individually in one metal layer of 7 hooks.
- 2 lock can put / hag on one hook as per requirement
- Front fascia door on hinge base welded with box **having Tiny Holes for more durability & stability of box.**
There will be website www.krmloto.com on each box.
- Pre drilled hole on back side of box to mount on any surface
- There Will be no Label on boxes. if require label on boxes that will be extra cost as separate item, not fix on boxes
- **Color** – Grey or as per quantity required
- **KKRM-K-LPS-G-15155-1 = 1 LAYER**



KKRM-K-LPS-G-15155-1

GSTIN No.: 06AAMPW8746Q126,
PAN No.: AAVPW8746Q
TIN No.: 06821328889,
TAN no.: RTKKO3359G
IEC: 0509006116

M: 00 91 9810 291 381, 8900 544 881



OEM Manufacturer & Global Supplier of
Lockout Tagout & Safety Products

to meet
OSHA'S Lockout Tagout Standard
29 CFR, 1910.147&1910.269



www.lotoappliances.com



GSTIN No.: 06AAECK2831L1Z1
PAN No.: AAECK2831L
TIN No.: 06824000112
CIN No.: U31903HR2011PTC042508
IEC: AAECK2831L

Telefax: 00 91 129 4021 381, 413 1381 (D)

Regd. Office:1H/31-A, N.I.T, Faridabad-121001 (Haryana) Postal Office:615, Sector-15-A, Faridabad-121007-Haryana-NCR-INDIA

www.krmcorporation.com

www.lockouttagouts.com

www.krmloto.com

www.locktagindia.com

www.lotoappliances.com

KRM LOTO – LOCKOUT PADLOCK STATION- POLYCARBONATE CLEAR FASCIA

- **Material** – Made from ABS +Polycarbonate compositions material. It is moulded piece.
- Front side Polycarbonate Clear Fascia with border frame.
- **Size** – 156X 156 X 64MM
- Provision of pre drilled hole on back side to mount any other surface.
- 1 Layer of Metal J Type hook (1 layer having 7 no's hook) One lock & key separately can place /hang on alternate hook.
- 4 padlock can hang individually in one metal layer of 7 hooks.
- 5 locking hooks outside to put locks
- **Weight** – ± 225 gms
- **Color** – Yellow,/Red or as per quantity required
- **KKRM-K-LPST-PCF-Y15156-5 = 1 LAYER**
- **KKRM-K-LPST-PCF-R15156-5 = 1 LAYER**



KKRM-K-LPST-
PCF-Y15156-5



KKRM-K-LPST-
PCF-R15156-5

GSTIN No.: 06AAVPW8746Q1Z6,
PAN No.: AAVPW8746Q
TIN No.: 06821328889,
TAN no.: RTKKO3359G
IEC: 0509006116

M: 00 91 9810 291 381, 8900 544 881



OEM Manufacturer & Global Supplier of
Lockout Tagout & Safety Products

to meet
OSHA'S Lockout Tagout Standard
29 CFR, 1910.147&1910.269



www.lotoappliances.com



GSTIN No.: 06AAECK2831L1Z1
PAN No.: AAECK2831L
TIN No.: 06824000112
CIN No.: U31903HR2011PTC042508
IEC: AAECK2831L

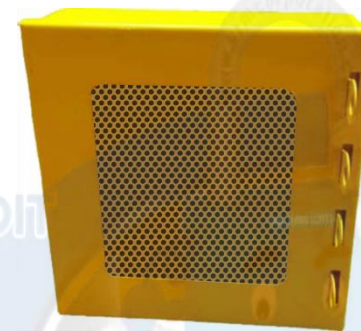
Telefax: 00 91 129 4021 381, 413 1381 (D)

Regd. Office: 1H/31-A, N.I.T, Faridabad-121001 (Haryana) Postal Office: 615, Sector-15-A, Faridabad-121007-Haryana-NCR-INDIA

www.krmcorporation.com | www.lockouttagouts.com | www.krmloto.com | www.locktagindia.com | www.lotoappliances.com

KRM LOTO – LOCKOUT PADLOCK STATION-MESH FASCIA-15155-4

- KRM LOTO Key and documentation box comprising of 1 small boxes with 4 in built locking hooks.
- Made from mild steel with duly phosphate powder coated.
- Resistant to corrosion.
- **Size of individual small box** – 150 mm x 150 mm x 50 mm.
- **Weight of individual small box** – ± 600 gms
- Provision of 4 slots for locking purpose on each box.
- 1 Layer of Metal J Type hook (1 layer having 7 no's hook)
- One lock & key separately can place/hang on alternate hook.
- 4 padlock can hang individually in one metal layer of 7 hooks.
- 2 lock can put / hag on one hook as per requirement
- Front side MESH Fascia with border frame.
- **There will be website www.krmloto.com on each box.**
- Pre drilled hole on back side of box to mount on any surface
- There Will be no Label on boxes. if require label on boxes that will be extra cost as separate item, not fix on boxes
- **Color** – Yellow or as per quantity required
- **KKRM-K-LPS-MFY-15155-4 = 1 LAYER**
- **KKRM-K-LPS-MFR-15155-4 = 1 LAYER**



KKRM-K-LPS-MFY-15155-4



KKRM-K-LPS-MFR-15155-4

GSTIN No.: 06AAMPW8746Q1Z6,
PAN No.: AAVPW8746Q
TIN No.: 0682132889,
TAN no.: RTKKO3359G
IEC: 0509006116

M: 00 91 9810 291 381, 8900 544 881



OEM Manufacturer & Global Supplier of
Lockout Tagout & Safety Products

to meet
OSHA'S Lockout Tagout Standard
29 CFR, 1910.147&1910.269



www.lockoutappliances.com



GSTIN No.: 06AAECK2831L1Z1
PAN No.: AAECK2831L
TIN No.: 06824000112
CIN No.: U31903HR2011PTC042508
IEC: AAECK2831L

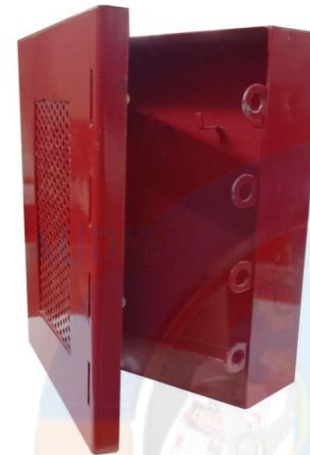
Telefax: 00 91 129 4021 381, 413 1381 (D)

Regd. Office: 1H/31-A, N.I.T, Faridabad-121001 (Haryana) | Postal Office: 615, Sector-15-A, Faridabad-121007-Haryana-NCR-INDIA

www.krmcorporation.com | www.lockouttagouts.com | www.krmloto.com | www.locktagindia.com | www.lotoappliances.com

KRM LOTO – LOCKOUT PADLOCK STATION-MESH FASCIA-225155-4

- KRM LOTO Key and documentation box comprising of 1 small boxes with 4 in built locking hooks.
- Made from mild steel with duly phosphate powder coated.
- Resistant to corrosion.
- **Size of individual small box** – 225 mm x 150 mm x 50 mm.
- **Weight of individual small box** – ± 1 kg
- Provision of 4 slots for locking purpose on box.
- 1 Layer of Metal J Type hook (1 layer having 7 no's hook)
One lock & key separately can place/hang on alternate hook.
- 4 padlock can hang individually in one metal layer of 7 hooks.
- 2 lock can put / hag on one hook as per requirement
- Front side MESH Fascia with border frame.
- **There will be website www.krmloto.com on each box.**
- Pre drilled hole on back side of box to mount on any surface
- There Will be no Label on boxes. if require label on boxes that will be extra cost as separate item, not fix on boxes
- **Color** – Yellow or as per quantity required
- **KKRM-K-LPS-MFY-15155-4 = 1 LAYER**
- **KKRM-K-LPS-MFR-15155-4 = 1 LAYER**



KKRM-K-LPS-MFR-225155-4



KKRM-K-LPS-MFY-225155-4